

Product datasheet

Anti-Smac / Diablo antibody ab23450

[2 Images](#)

Overview

Product name	Anti-Smac / Diablo antibody
Description	Rabbit polyclonal to Smac / Diablo
Host species	Rabbit
Tested applications	Suitable for: ELISA, WB, IHC-P
Species reactivity	Reacts with: Rabbit, Human Predicted to work with: Cow, Dog, Pig
Immunogen	A region within synthetic peptide: LQVEEVHQLS RKAETKLAEA QIEELRQKTQ EEGEERAESE QEAYLRED, corresponding to C terminal amino acids 139-186 of Human Smac/ Diablo Run BLAST with ExPASy Run BLAST with NCBI
Positive control	HepG2 cell lysate for WB. Paraffin embedded human kidney tissue for IHC.

Properties

Form	Liquid
Storage instructions	Shipped at 4°C. Store at +4°C short term (1-2 weeks). Upon delivery aliquot. Store at -20°C or -80°C. Avoid freeze / thaw cycle.
Storage buffer	Preservative: None Constituents: 2% Sucrose, PBS
Purity	Immunogen affinity purified
Purification notes	The antibody was purified by affinity chromatography.
Clonality	Polyclonal
Isotype	IgG

Applications

Our [Abpromise guarantee](#) covers the use of **ab23450** in the following tested applications.

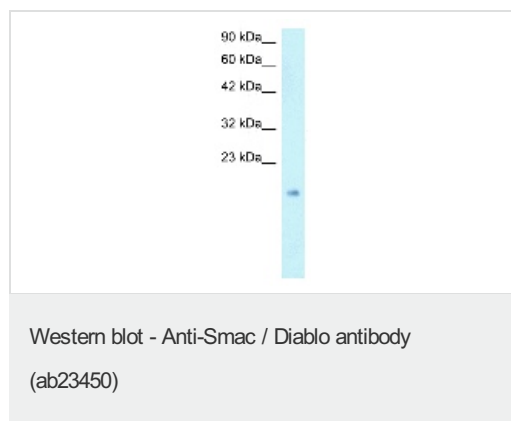
The application notes include recommended starting dilutions; optimal dilutions/concentrations should be determined by the end user.

Application	Abreviews	Notes
ELISA		1/15000.
WB		Use a concentration of 1 - 1.25 µg/ml. Predicted molecular weight: 27 kDa. Good results were obtained when blocked with 5% non-fat dry milk in 0.05% PBS-T.
IHC-P		Use a concentration of 4 - 8 µg/ml.

Target

Function	Promotes apoptosis by activating caspases in the cytochrome c/Apaf-1/caspase-9 pathway. Acts by opposing the inhibitory activity of inhibitor of apoptosis proteins (IAP).
Tissue specificity	Ubiquitously expressed with highest expression in testis. Expression is also high in heart, liver, kidney, spleen, prostate and ovary. Low in brain, lung, thymus and peripheral blood leukocytes.
Domain	The mature N-terminus mediates interaction with XIAP.
Cellular localization	Mitochondrion. Released into the cytosol when cells undergo apoptosis.

Images



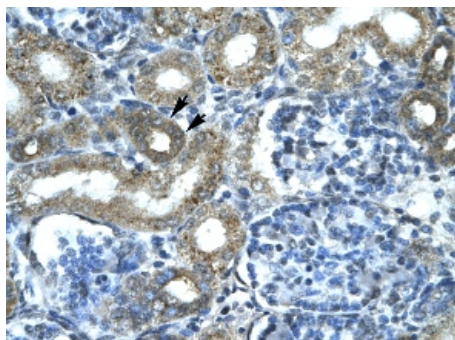
Anti-Smac / Diablo antibody (ab23450) at 1 µg/ml + HepG2 lysate

Secondary

HRP conjugated anti-Rabbit IgG (1: 50,000-100,000)

Predicted band size: 27 kDa

Observed band size: 14 kDa



ab23450 at 4-8 ug/ml staining human Smac in kidney cells by immunohistochemistry (Paraffin embedded tissue). Epithelial cells of renal tubule (indicated with arrows). Magnification 400x.

Immunohistochemistry (Formalin/PFA-fixed paraffin-embedded sections) - Anti-Smac / Diablo antibody (ab23450)

Please note: All products are "FOR RESEARCH USE ONLY AND ARE NOT INTENDED FOR DIAGNOSTIC OR THERAPEUTIC USE"

Our Abpromise to you: Quality guaranteed and expert technical support

- Replacement or refund for products not performing as stated on the datasheet
- Valid for 12 months from date of delivery
- Response to your inquiry within 24 hours
- We provide support in Chinese, English, French, German, Japanese and Spanish
- Extensive multi-media technical resources to help you
- We investigate all quality concerns to ensure our products perform to the highest standards

If the product does not perform as described on this datasheet, we will offer a refund or replacement. For full details of the Abpromise, please visit <https://www.abcam.com/abpromise> or contact our technical team.

Terms and conditions

- Guarantee only valid for products bought direct from Abcam or one of our authorized distributors