

Product datasheet

Anti-CD3 antibody [CT-3] (FITC) ab24895

1 Image

Overview

Product name	Anti-CD3 antibody [CT-3] (FITC)
Description	Mouse monoclonal [CT-3] to CD3 (FITC)
Host species	Mouse
Conjugation	FITC. Ex: 493nm, Em: 528nm
Specificity	ab24895 recognises CD3.
Tested applications	Suitable for: Functional Studies, Flow Cyt, IHC-Fr, IP
Species reactivity	Reacts with: Chicken
Immunogen	The details of the immunogen for this antibody are not available.
General notes	Abcam is committed to meeting high standards of ethical manufacturing and has decided to discontinue this product by July 2018 as it has been generated by the ascites method. We are sorry for any inconvenience this may cause.

Properties

Form	Liquid
Storage instructions	Shipped at 4°C. Store at +4°C.
Storage buffer	Preservative: 0.1% Sodium Azide Constituents: PBS
Purity	IgG fraction
Clonality	Monoclonal
Clone number	CT-3
Isotype	IgG1
Light chain type	kappa

Applications

Our [Abpromise guarantee](#) covers the use of **ab24895** in the following tested applications.

The application notes include recommended starting dilutions; optimal dilutions/concentrations should be determined by the end user.

Application	Abreviews	Notes
Functional Studies		Use at an assay dependent concentration. Immunosuppression of T cells.
Flow Cyt		Use 1µg for 10 ⁶ cells. ab106163 - Mouse monoclonal IgG1, is suitable for use as an isotype control with this antibody.
IHC-Fr		Use at an assay dependent concentration.
IP		Use at an assay dependent concentration.

Target

Function

The CD3 complex mediates signal transduction.

Involvement in disease

Defects in CD3D are a cause of severe combined immunodeficiency autosomal recessive T-cell-negative/B-cell-positive/NK-cell-positive (T(-)/B(+)/NK(+)) SCID [MIM:608971]. A form of severe combined immunodeficiency (SCID), a genetically and clinically heterogeneous group of rare congenital disorders characterized by impairment of both humoral and cell-mediated immunity, leukopenia, and low or absent antibody levels. Patients present in infancy recurrent, persistent infections by opportunistic organisms. The common characteristic of all types of SCID is absence of T-cell-mediated cellular immunity due to a defect in T-cell development.

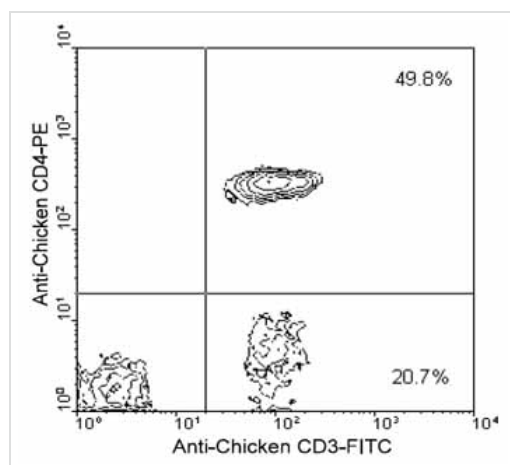
Sequence similarities

Contains 1 ITAM domain.

Cellular localization

Membrane.

Images



Flow Cytometry - Anti-CD3 antibody [CT-3] (FITC)
(ab24895)

Chicken peripheral blood mononuclear cells were double stained with a PE-conjugated mouse anti-chicken antibody ([ab25420](#) at 0.1 µg/10⁶ cells) and ab24895. Small lymphocytes were then gated and analyzed on a FACScan™ flow cytometer (BDIS, San Jose, CA).

Please note: All products are "FOR RESEARCH USE ONLY AND ARE NOT INTENDED FOR DIAGNOSTIC OR THERAPEUTIC USE"

Our Abpromise to you: Quality guaranteed and expert technical support

- Replacement or refund for products not performing as stated on the datasheet
- Valid for 12 months from date of delivery
- Response to your inquiry within 24 hours

- We provide support in Chinese, English, French, German, Japanese and Spanish
- Extensive multi-media technical resources to help you
- We investigate all quality concerns to ensure our products perform to the highest standards

If the product does not perform as described on this datasheet, we will offer a refund or replacement. For full details of the Abpromise, please visit <https://www.abcam.com/abpromise> or contact our technical team.

Terms and conditions

- Guarantee only valid for products bought direct from Abcam or one of our authorized distributors