

Product datasheet

Anti-Integrin alpha 4+beta 7 antibody [DATK32] (Biotin) ab25217

[2 References](#) [1 Image](#)

Overview

Product name	Anti-Integrin alpha 4+beta 7 antibody [DATK32] (Biotin)
Description	Rat monoclonal [DATK32] to Integrin alpha 4+beta 7 (Biotin)
Host species	Rat
Conjugation	Biotin
Tested applications	Suitable for: Flow Cyt, IHC-Fr, Blocking
Species reactivity	Reacts with: Mouse
Immunogen	AKR/Cum Mouse spontaneous T lymphoma cell line TK1.
Epitope	ab25217 recognizes a conformational epitope on the heterodimer.
Positive control	Flow Cyt: Mouse spleen cells and C57Bl/6 bone marrow cells.
General notes	ab25217 could be useful for induction of homotypic cellular aggregation.

Properties

Form	Liquid
Storage instructions	Shipped at 4°C. Store at +4°C. Do Not Freeze. Store In the Dark.
Storage buffer	pH: 7.20 Preservative: 0.09% Sodium azide Constituents: 0.1% Gelatin, 0.88% Sodium chloride, 0.12% Monobasic dihydrogen sodium phosphate
Purity	Affinity purified
Primary antibody notes	ab25217 could be useful for induction of homotypic cellular aggregation.
Clonality	Monoclonal
Clone number	DATK32
Isotype	IgG2a
Light chain type	kappa

Applications

Our [Abpromise guarantee](#) covers the use of **ab25217** in the following tested applications.

The application notes include recommended starting dilutions; optimal dilutions/concentrations should be determined by the end user.

Application	Abreviews	Notes
Flow Cyt		Use at an assay dependent concentration. ab18445 - Rat monoclonal IgG2a, is suitable for use as an isotype control with this antibody.
IHC-Fr		Use at an assay dependent concentration.
Blocking		Use at an assay dependent concentration.

Target

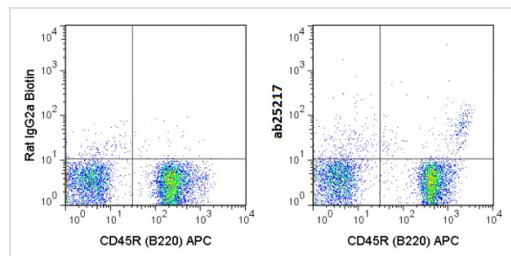
Relevance

Integrin alpha 4 beta 7, also known as, the lymphocyte Peyer's patch adhesion molecule (LPAM1) is a member of the integrin family of cell surface receptors. It is expressed primarily on mucosal lymphocytes, but is also present on NK cells and eosinophils. The alpha 4 beta 7 heterodimer mediates the binding of lymphocytes to its ligand, mucosal vascular addressin (MAdCAM1) on the high endothelial venules, thereby directing the homing of lymphocytes into Peyer's patches and intestinal lamina propria.

Cellular localization

Membrane; Single pass type I membrane protein.

Images



C57Bl/6 bone marrow cells were stained with APC-conjugated anti-mouse CD45R (B220) and 0.25µg ab25217 (right) or 0.25µg biotin-conjugated rat IgG2a isotype control (left) followed by streptavidin PE.

Flow Cytometry - Anti-Integrin alpha 4+beta 7 antibody [DATK32] (Biotin) (ab25217)

Please note: All products are "FOR RESEARCH USE ONLY AND ARE NOT INTENDED FOR DIAGNOSTIC OR THERAPEUTIC USE"

Our Abpromise to you: Quality guaranteed and expert technical support

- Replacement or refund for products not performing as stated on the datasheet
- Valid for 12 months from date of delivery
- Response to your inquiry within 24 hours
- We provide support in Chinese, English, French, German, Japanese and Spanish
- Extensive multi-media technical resources to help you
- We investigate all quality concerns to ensure our products perform to the highest standards

If the product does not perform as described on this datasheet, we will offer a refund or replacement. For full details of the Abpromise, please visit <https://www.abcam.com/abpromise> or contact our technical team.

Terms and conditions

- Guarantee only valid for products bought direct from Abcam or one of our authorized distributors