

## Product datasheet

# Anti-MCL1 antibody ab25956

3 Images

### Overview

<b>Product name</b>	Anti-MCL1 antibody
<b>Description</b>	Rabbit polyclonal to MCL1
<b>Host species</b>	Rabbit
<b>Specificity</b>	ab25956 recognises Myeloid cell leukemia-1 (Mcl-1).
<b>Tested applications</b>	<b>Suitable for:</b> ICC/IF, WB
<b>Species reactivity</b>	<b>Reacts with:</b> Human
<b>Immunogen</b>	Synthetic peptide, corresponding to 16 N terminal amino acids of Human MCL1 (GenBank accession no. NP_068779).
<b>Positive control</b>	Raji cell lysates

### Properties

<b>Form</b>	Liquid
<b>Storage instructions</b>	Shipped at 4°C. Store at +4°C.
<b>Storage buffer</b>	Preservative: 0.02% Sodium Azide Constituents: PBS
<b>Purity</b>	IgG fraction
<b>Purification notes</b>	Purified by ion exchange chromatography.
<b>Clonality</b>	Polyclonal
<b>Isotype</b>	IgG

### Applications

Our [Abpromise guarantee](#) covers the use of **ab25956** in the following tested applications.

The application notes include recommended starting dilutions; optimal dilutions/concentrations should be determined by the end user.

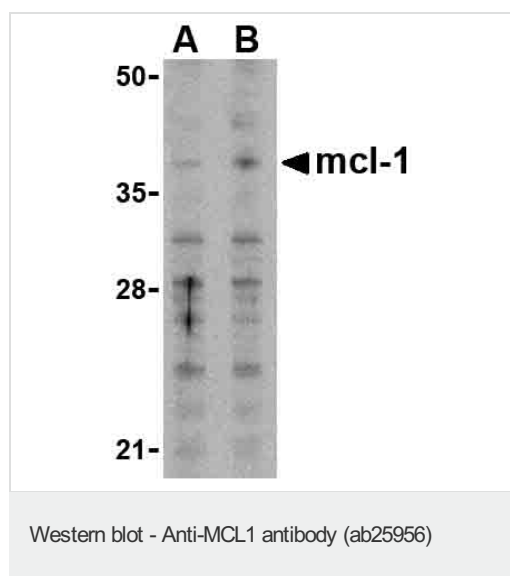
Application	Abreviews	Notes
ICC/IF		Use a concentration of 10 µg/ml.

Application	Abreviews	Notes
WB		Use a concentration of 1 - 2 µg/ml. Detects a band of approximately 37 kDa (predicted molecular weight: 37 kDa).

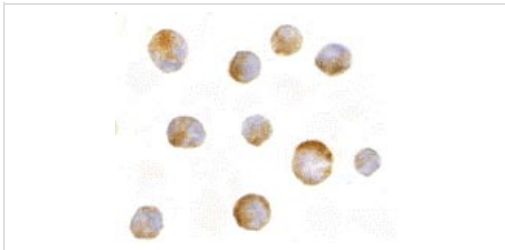
## Target

<b>Function</b>	Involved in the regulation of apoptosis versus cell survival, and in the maintenance of viability but not of proliferation. Mediates its effects by interactions with a number of other regulators of apoptosis. Isoform 1 inhibits apoptosis. Isoform 2 promotes apoptosis.
<b>Sequence similarities</b>	Belongs to the Bcl-2 family.
<b>Post-translational modifications</b>	Cleaved by CASP3 during apoptosis. In intact cells cleavage occurs preferentially after Asp-127, yielding a pro-apoptotic 28 kDa C-terminal fragment. Rapidly degraded in the absence of phosphorylation on Thr-163 in the PEST region. Phosphorylated on Thr-163. Treatment with taxol or okadaic acid induces phosphorylation on additional sites.
<b>Cellular localization</b>	Membrane. Cytoplasm. Mitochondrion. Nucleus > nucleoplasm. Cytoplasmic, associated with mitochondria.

## Images

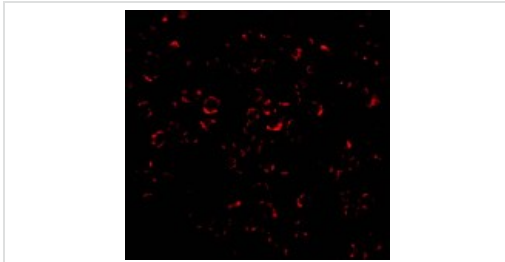


Western blot analysis of Mcl-1 in Raji cell lysates with ab25956 at (A) 1 and (B) 2 µg/ml.



ab25956 at 10µg/ml staining MCL-1 in Raji cells by ICC/IF

Immunocytochemistry/ Immunofluorescence - Anti-MCL1 antibody (ab25956)



Immunofluorescence of Mcl-1 in Raji cells using ab25956 at 20 ug/ml.

Immunocytochemistry/ Immunofluorescence - Anti-MCL1 antibody (ab25956)

**Please note:** All products are "FOR RESEARCH USE ONLY AND ARE NOT INTENDED FOR DIAGNOSTIC OR THERAPEUTIC USE"

### Our Abpromise to you: Quality guaranteed and expert technical support

- Replacement or refund for products not performing as stated on the datasheet
- Valid for 12 months from date of delivery
- Response to your inquiry within 24 hours
- We provide support in Chinese, English, French, German, Japanese and Spanish
- Extensive multi-media technical resources to help you
- We investigate all quality concerns to ensure our products perform to the highest standards

If the product does not perform as described on this datasheet, we will offer a refund or replacement. For full details of the Abpromise, please visit <https://www.abcam.com/abpromise> or contact our technical team.

### Terms and conditions

- Guarantee only valid for products bought direct from Abcam or one of our authorized distributors