


Product datasheet

Anti-CLIC2 antibody ab28687

1 Image

Overview

Product name	Anti-CLIC2 antibody
Description	Rabbit polyclonal to CLIC2
Host species	Rabbit
Tested applications	Suitable for: WB, ELISA
Species reactivity	Reacts with: Human Predicted to work with: Rat, Cow 
Immunogen	Synthetic peptide: SFDVGCNLFA KFSAYIKNTQ KEANKNFEKS LLKEFKRLDD YLNTPLLDEI, corresponding to a region within internal sequence amino acids 109-158 of Human CLIC2 Run BLAST with ExPASy Run BLAST with NCBI
Positive control	Jurkat cell lysate

Properties

Form	Liquid
Storage instructions	Shipped at 4°C. Upon delivery aliquot and store at -20°C. Avoid freeze / thaw cycles.
Storage buffer	Preservative: None Constituents: 2% Sucrose, PBS
Purity	Protein A purified
Clonality	Polyclonal
Isotype	IgG

Applications

Our [Abpromise guarantee](#) covers the use of **ab28687** in the following tested applications.

The application notes include recommended starting dilutions; optimal dilutions/concentrations should be determined by the end user.

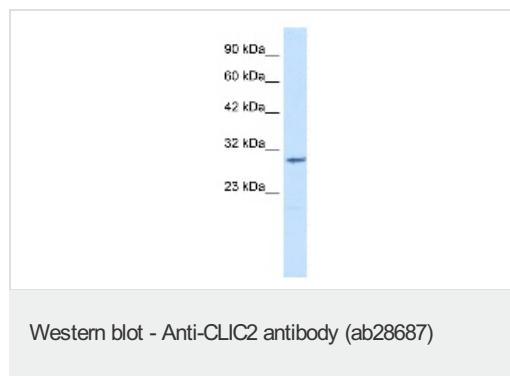
Application	Abreviews	Notes
WB		Use a concentration of 1.25 µg/ml. Predicted molecular weight: 28 kDa. Good results were obtained when blocked with 5% non-fat dry milk in 0.05% PBS-T.

Application	Abreviews	Notes
ELISA		1/62500.

Target

Function	Can insert into membranes and form chloride ion channels. Channel activity depends on the pH. Membrane insertion seems to be redox-regulated and may occur only under oxidizing conditions. Modulates the activity of RYR2 and inhibits calcium influx.
Tissue specificity	Detected in adult brain, heart, liver, lung, spleen, stomach and testis. Expressed in fetal liver and adult skeletal muscle.
Sequence similarities	Belongs to the chloride channel CLIC family. Contains 1 GST C-terminal domain.
Domain	Members of this family may change from a globular, soluble state to a state where the N-terminal domain is inserted into the membrane and functions as chloride channel. A conformation change of the N-terminal domain is thought to expose hydrophobic surfaces that trigger membrane insertion.
Cellular localization	Cytoplasm. Membrane. Exists both as soluble cytoplasmic protein and as membrane protein with probably a single transmembrane domain.

Images



Anti-CLIC2 antibody (ab28687) at 1.25 µg/ml
(in 5% skim milk / PBS buffer) + Jurkat cell
lysate at 10 µg/ml

Secondary

HRP conjugated anti-Rabbit IgG

Predicted band size: 28 kDa

Observed band size: 28 kDa

Gel concentration: 12%

Please note: All products are "FOR RESEARCH USE ONLY AND ARE NOT INTENDED FOR DIAGNOSTIC OR THERAPEUTIC USE"

Our Abpromise to you: Quality guaranteed and expert technical support

- Replacement or refund for products not performing as stated on the datasheet
- Valid for 12 months from date of delivery
- Response to your inquiry within 24 hours

- We provide support in Chinese, English, French, German, Japanese and Spanish
- Extensive multi-media technical resources to help you
- We investigate all quality concerns to ensure our products perform to the highest standards

If the product does not perform as described on this datasheet, we will offer a refund or replacement. For full details of the Abpromise, please visit <https://www.abcam.com/abpromise> or contact our technical team.

Terms and conditions

- Guarantee only valid for products bought direct from Abcam or one of our authorized distributors