

## Product datasheet

# Human liver tissue lysate - total protein ab29889

[2 References](#) [2 Images](#)

### Overview

---

**Product name** Human liver tissue lysate - total protein

**General notes**

Protein is isolated from whole tissue homogenates using a proprietary technique. The tissue was frozen in liquid nitrogen immediately after excision and then stored at -70°C. Quality control: 1. The isolated protein pattern on SDS-PAGE gel is visualized by coomassie blue staining. The pattern is consistent with each lot. 2. The isolated protein is Western Blot analyzed by either a GAPDH or beta-actin antibody. The expression level is consistent with each lot. Ethics: Human tissue samples are collected with the informed consent of the donors & relatives and are excised by licensed medical doctors. Tumor tissue samples are diagnosed and identified by at least two different evaluators. If you have more questions then please feel free to contact us. Donor information can be supplied on request.

**Tested applications** **Suitable for:** WB

### Properties

---

**Form** Liquid

**Storage instructions** Store at -80°C. Allow to warm to room temp and agitate gently before aliquotting.

**Storage buffer** Preservative: None

Constituents: 2% SDS, 10% Glycerol, 0.1% Bromophenol blue, Protease inhibitor, Sodium chloride, EDTA, Magnesium chloride, HEPES, 0.15M Beta mercaptoethanol

**Lysate notes**

Protein is isolated from whole tissue homogenates using a proprietary technique. The tissue was frozen in liquid nitrogen immediately after excision and then stored at -70°C. Quality control: 1. The isolated protein pattern on SDS-PAGE gel is visualized by coomassie blue staining. The pattern is consistent with each lot. 2. The isolated protein is Western Blot analyzed by either a GAPDH or beta-actin antibody. The expression level is consistent with each lot. Ethics: Human tissue samples are collected with the informed consent of the donors & relatives and are excised by licensed medical doctors. Tumor tissue samples are diagnosed and identified by at least two different evaluators. If you have more questions then please feel free to contact us. Donor information can be supplied on request.

### Applications

---

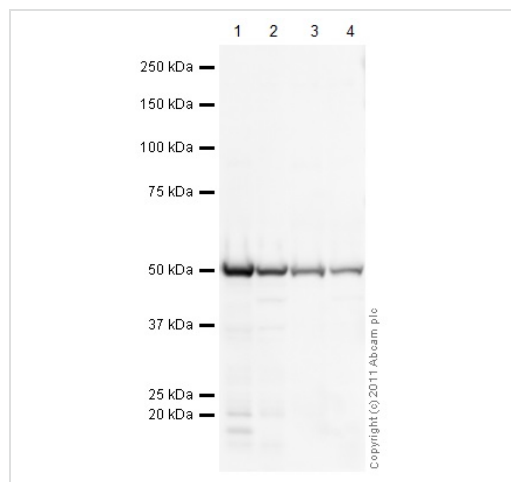
Our [Abpromise guarantee](#) covers the use of **ab29889** in the following tested applications.

The application notes include recommended starting dilutions; optimal dilutions/concentrations should be determined by the end user.

Application	Abreviews	Notes
-------------	-----------	-------

WB Use at an assay dependent dilution. Samples need to be boiled for 5 minutes and put on ice before use.

## Images



Western blot - Human liver tissue lysate - total protein (ab29889)

**All lanes :** Anti-Selenium Binding Protein 1 antibody ([ab90135](#))

**Lane 1 :** Human liver tissue lysate - total protein ([ab29889](#))

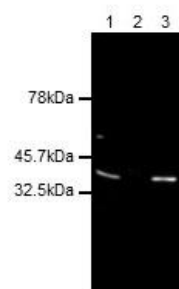
**Lane 2 :** Human colon tissue lysate - total protein ([ab30051](#))

**Lane 3 :** Human spleen tissue lysate - total protein ([ab29699](#))

**Lane 4 :** Human placenta tissue lysate - total protein ([ab29745](#))

Lysates/proteins at 20 µg per lane.

**Exposure time:** 5 seconds



© 2016 Abcam plc.

Western blot - Human liver tissue lysate - total protein (ab29889)

Data courtesy of an anonymous collaborator.

**All lanes :** Anti-GAPDH (expected size 37kDa) at 1/10000 dilution

**Lane 1 :** Human liver tissue lysate - total protein (ab29889) at 5 µg

**Lane 2 :** Ladder

**Lane 3 :** Human ES whole cell lysate at 10 µg

#### Secondary

**All lanes :** Donkey Anti-Mouse IgG H&L (HRP) (ab205724) at 1/5000 dilution

Developed using the ECL technique.

**Exposure time:** 5 seconds

Blocking buffer- 5% BSA /1% OvAlb /PBS (also works with 5% milk powder) for 3 hours.

**Please note:** All products are "FOR RESEARCH USE ONLY AND ARE NOT INTENDED FOR DIAGNOSTIC OR THERAPEUTIC USE"

#### Our Abpromise to you: Quality guaranteed and expert technical support

- Replacement or refund for products not performing as stated on the datasheet
- Valid for 12 months from date of delivery
- Response to your inquiry within 24 hours
- We provide support in Chinese, English, French, German, Japanese and Spanish
- Extensive multi-media technical resources to help you
- We investigate all quality concerns to ensure our products perform to the highest standards

If the product does not perform as described on this datasheet, we will offer a refund or replacement. For full details of the Abpromise, please visit <https://www.abcam.com/abpromise> or contact our technical team.

#### Terms and conditions

- Guarantee only valid for products bought direct from Abcam or one of our authorized distributors