

Product datasheet

Anti-LW1 antibody ab33060

[2 Images](#)

Overview

Product name	Anti-LW1 antibody
Description	Rabbit polyclonal to LW1
Host species	Rabbit
Specificity	ab33060 recognises LW-1.
Tested applications	Suitable for: ELISA, WB, IHC-P
Species reactivity	Reacts with: Human
Immunogen	Synthetic peptide corresponding to a region between amino acids 228-273 of human LW1. (Note: the exact amino acid sequence is proprietary).
Positive control	WB: Jurkat cell lysate IHC: human skin

Properties

Form	Liquid
Storage instructions	Shipped at 4°C. Upon delivery aliquot and store at -20°C. Avoid freeze / thaw cycles.
Storage buffer	Preservative: 0.09% Sodium azide Constituents: 2% Sucrose, PBS
Purity	Immunogen affinity purified
Clonality	Polyclonal
Isotype	IgG

Applications

Our [Abpromise guarantee](#) covers the use of **ab33060** in the following tested applications.

The application notes include recommended starting dilutions; optimal dilutions/concentrations should be determined by the end user.

Application	Abreviews	Notes
ELISA		1/1.5625e+006.
WB		Use a concentration of 2 µg/ml. Detects a band of approximately 45 kDa (predicted molecular weight: 47 kDa). Good results were obtained when blocked with 5% non-fat dry milk in 0.05% PBS-T.

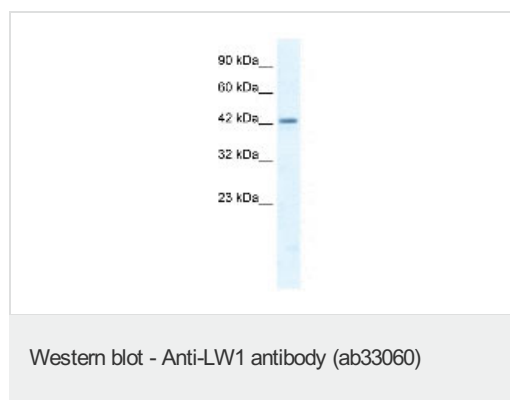
Application	Abreviews	Notes
IHC-P		Use at an assay dependent concentration.

Target

Relevance Located on chromosome X, this gene encodes hypothetical protein LOC51402.

Cellular localization Nucleus (Potential). Cytoplasm.

Images



Anti-LW1 antibody (ab33060) at 2 µg/ml (in 5% skim milk / PBS buffer) + Jurkat cell lysate at 10 µg

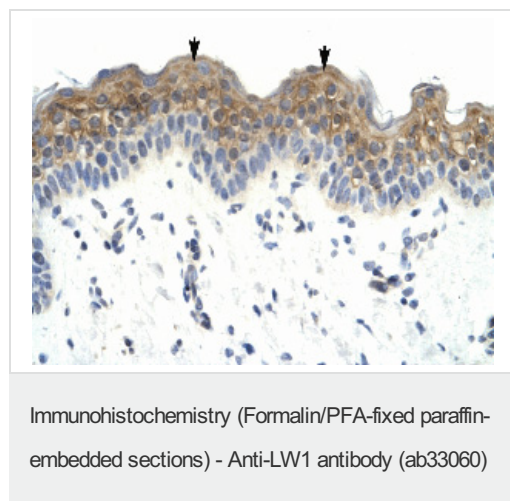
Secondary

HRP conjugated anti-Rabbit IgG diluted 1:50,000

Predicted band size: 47 kDa

Observed band size: 45 kDa

[why is the actual band size different from the predicted?](#)



Immunohistochemistry (Formalin/PFA-fixed paraffin-embedded sections) analysis of human skin tissue labelling LW1 with ab33060 at 8µg/ml. Squamous epithelial cells are positively labelled (arrows).

Please note: All products are "FOR RESEARCH USE ONLY AND ARE NOT INTENDED FOR DIAGNOSTIC OR THERAPEUTIC USE"

Our Abpromise to you: Quality guaranteed and expert technical support

- Replacement or refund for products not performing as stated on the datasheet
- Valid for 12 months from date of delivery
- Response to your inquiry within 24 hours
- We provide support in Chinese, English, French, German, Japanese and Spanish

- Extensive multi-media technical resources to help you
- We investigate all quality concerns to ensure our products perform to the highest standards

If the product does not perform as described on this datasheet, we will offer a refund or replacement. For full details of the Abpromise, please visit <https://www.abcam.com/abpromise> or contact our technical team.

Terms and conditions

- Guarantee only valid for products bought direct from Abcam or one of our authorized distributors