

Product datasheet

Anti-LYVE1 antibody [4G1] ab33477

2 Images

Overview

Product name	Anti-LYVE1 antibody [4G1]
Description	Mouse monoclonal [4G1] to LYVE1
Host species	Mouse
Tested applications	Suitable for: ELISA, WB
Species reactivity	Reacts with: Human
Immunogen	Recombinant human LYVE-1 (25-235 aa) purified from E. coli.
Positive control	A549 cell lysate

Properties

Form	Liquid
Storage instructions	Shipped at 4°C. Store at +4°C short term (1-2 weeks). Upon delivery aliquot. Store at -20°C long term.
Storage buffer	Preservative: 0.02% Thimerosal (merthiolate) Constituents: PBS, pH 7.4
Purity	Protein G purified
Clonality	Monoclonal
Clone number	4G1
Myeloma	Sp2/0
Isotype	IgG2b
Light chain type	kappa

Applications

Our [Abpromise guarantee](#) covers the use of **ab33477** in the following tested applications.

The application notes include recommended starting dilutions; optimal dilutions/concentrations should be determined by the end user.

Application	Abreviews	Notes
ELISA		Use at an assay dependent dilution.

Application	Abreviews	Notes
WB		1/500 - 1/1000. Detects a band of approximately 38 kDa (predicted molecular weight: 35 kDa).

Target

Function

Ligand-specific transporter trafficking between intracellular organelles (TGN) and the plasma membrane. Plays a role in autocrine regulation of cell growth mediated by growth regulators containing cell surface retention sequence binding (CRS). May act as a hyaluronan (HA) transporter, either mediating its uptake for catabolism within lymphatic endothelial cells themselves, or its transport into the lumen of afferent lymphatic vessels for subsequent re-uptake and degradation in lymph nodes.

Tissue specificity

Mainly expressed in endothelial cells lining lymphatic vessels.

Sequence similarities

Contains 1 Link domain.

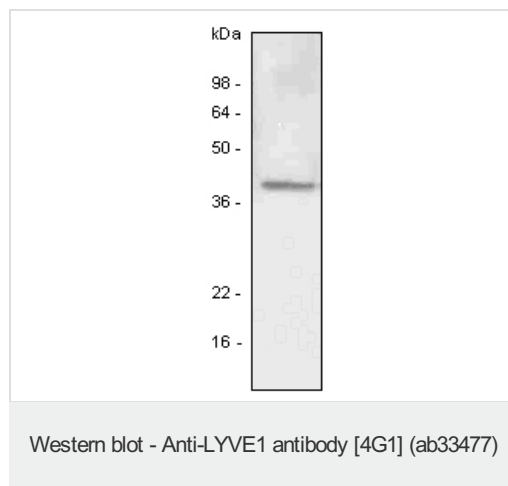
Post-translational modifications

O-glycosylated.

Cellular localization

Membrane. Localized to the plasma membrane and in vesicles near extranuclear membranes which may represent trans-Golgi network (TGN) and endosomes/prelysosomal compartments. Undergoes ligand-dependent internalization and recycling at the cell surface.

Images



Anti-LYVE1 antibody [4G1] (ab33477) at 1/500 dilution + A549 (lung carcinoma) cell lysate

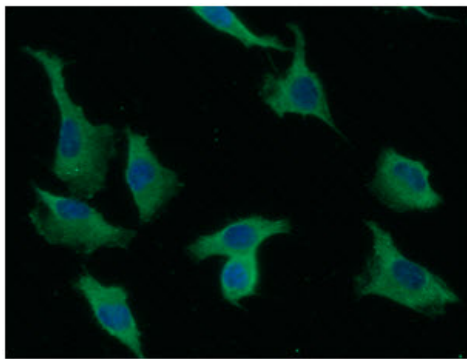
Secondary

goat anti-mouse secondary antibody conjugated to HRP

Developed using the ECL technique.

Predicted band size: 35 kDa

Observed band size: 38 kDa



ICC/IF analysis of LYVE-1 in A549 cells line, stained with DAPI (Blue) for nucleus staining and monoclonal anti-human LYVE-1 antibody (1:100) with goat anti-mouse IgG-Alexa fluor 488 conjugate (Green).

Immunocytochemistry/ Immunofluorescence - Anti-LYVE1 antibody [4G1] (ab33477)

Please note: All products are "FOR RESEARCH USE ONLY AND ARE NOT INTENDED FOR DIAGNOSTIC OR THERAPEUTIC USE"

Our Abpromise to you: Quality guaranteed and expert technical support

- Replacement or refund for products not performing as stated on the datasheet
- Valid for 12 months from date of delivery
- Response to your inquiry within 24 hours
- We provide support in Chinese, English, French, German, Japanese and Spanish
- Extensive multi-media technical resources to help you
- We investigate all quality concerns to ensure our products perform to the highest standards

If the product does not perform as described on this datasheet, we will offer a refund or replacement. For full details of the Abpromise, please visit <https://www.abcam.com/abpromise> or contact our technical team.

Terms and conditions

- Guarantee only valid for products bought direct from Abcam or one of our authorized distributors