

Product datasheet

Anti-Mesothelin antibody [K1] ab3362

★ ★ ★ ★ ★ 1 Abreviews
 7 References
 1 Image

Overview

Product name	Anti-Mesothelin antibody [K1]
Description	Mouse monoclonal [K1] to Mesothelin
Host species	Mouse
Tested applications	Suitable for: WB, IHC-Fr, Flow Cyt, IHC-P
Species reactivity	Reacts with: Human, Cynomolgus monkey
Immunogen	Spleen lymphocytes from mice fused with OVCAR-3, an ovarian tumorcell line derived from poorly differentiated adenocarcinoma of the ovary.
Positive control	Tonsil, lymph node and OVCAR-3 cells (human).
General notes	This product is sold as crude ascites fluid so we estimate the IgG concentration ~1-3mg/ml.

Properties

Form	Liquid
Storage instructions	Shipped at 4°C. Store at +4°C short term (1-2 weeks). Store at -20°C or -80°C. Avoid freeze / thaw cycle.
Storage buffer	Constituent: 1% BSA
Purity	Ascites
Clonality	Monoclonal
Clone number	K1
Isotype	IgG1

Applications

Our [Abpromise guarantee](#) covers the use of **ab3362** in the following tested applications.

The application notes include recommended starting dilutions; optimal dilutions/concentrations should be determined by the end user.

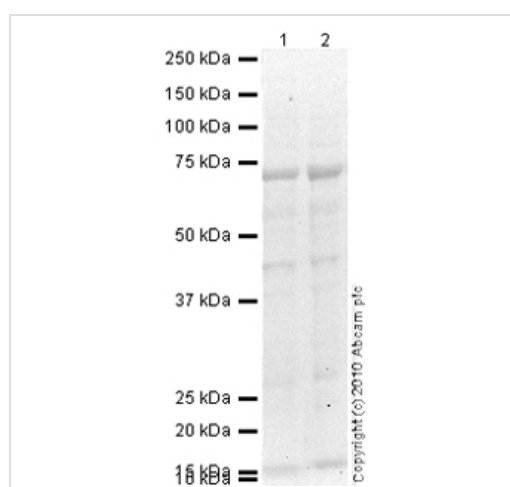
Application	Abreviews	Notes
WB	★ ★ ★ ★ ★	Use at an assay dependent concentration. Detects a band of approximately 73 kDa (predicted molecular weight: 69 kDa). PubMed: 18490724

Application	Abreviews	Notes
IHC-Fr		Use at an assay dependent concentration. Acetone fixation was used.
Flow Cyt		Use at an assay dependent concentration. PubMed: 18490724 ab170190 - Mouse monoclonal IgG1, is suitable for use as an isotype control with this antibody.
IHC-P		Use at an assay dependent concentration. Antigen retrieval is not essential but may optimise staining. One hour primary antibody incubation was used.

Target

Function	Membrane-anchored forms may play a role in cellular adhesion. Megakaryocyte-potentiating factor (MPF) potentiates megakaryocyte colony formation in vitro.
Tissue specificity	Expressed in lung. Expressed at low levels in heart, placenta and kidney. Expressed in mesothelial cells. Highly expressed in mesotheliomas, ovarian cancers, and some squamous cell carcinomas (at protein level).
Involvement in disease	Note=Antibodies against MSLN are detected in patients with mesothelioma and ovarian cancer.
Sequence similarities	Belongs to the mesothelin family.
Post-translational modifications	Both MPF and the cleaved form of mesothelin are N-glycosylated. Proteolytically cleaved by a furin-like convertase to generate megakaryocyte-potentiating factor (MPF), and the cleaved form of mesothelin.
Cellular localization	Secreted and Cell membrane. Golgi apparatus.

Images



Western blot - Anti-Mesothelin antibody [K1] (ab3362)

All lanes : Anti-Mesothelin antibody [K1] (ab3362) at 1 µg/ml

Lane 1 : Lung (Human) Tissue Lysate

Lane 2 : Human placenta tissue lysate - total protein ([ab29745](#))

Lysates/proteins at 10 µg per lane.

Secondary

All lanes : Goat Anti-Mouse IgG H&L (HRP) preadsorbed ([ab97040](#)) at 1/5000 dilution

Developed using the ECL technique.

Performed under reducing conditions.

Predicted band size: 69 kDa

Observed band size: 73 kDa

[why is the actual band size different from the predicted?](#)

Additional bands at: 15 kDa, 44 kDa. We are unsure as to the identity of these extra bands.

Exposure time: 20 minutes

Mesothelin contains a number of potential glycosylation sites (SwissProt) which may explain its migration at a higher molecular weight than predicted.

Please note: All products are "FOR RESEARCH USE ONLY AND ARE NOT INTENDED FOR DIAGNOSTIC OR THERAPEUTIC USE"

Our Abpromise to you: Quality guaranteed and expert technical support

- Replacement or refund for products not performing as stated on the datasheet
- Valid for 12 months from date of delivery
- Response to your inquiry within 24 hours
- We provide support in Chinese, English, French, German, Japanese and Spanish
- Extensive multi-media technical resources to help you
- We investigate all quality concerns to ensure our products perform to the highest standards

If the product does not perform as described on this datasheet, we will offer a refund or replacement. For full details of the Abpromise, please visit <https://www.abcam.com/abpromise> or contact our technical team.

Terms and conditions

- Guarantee only valid for products bought direct from Abcam or one of our authorized distributors