

Product datasheet

# Anti-Metabotropic Glutamate Receptor 8 antibody ab38571

1 Image

Overview

---

<b>Product name</b>	Anti-Metabotropic Glutamate Receptor 8 antibody
<b>Description</b>	Rabbit polyclonal to Metabotropic Glutamate Receptor 8
<b>Host species</b>	Rabbit
<b>Tested applications</b>	<b>Suitable for:</b> ELISA, WB
<b>Species reactivity</b>	<b>Reacts with:</b> Mouse, Human
<b>Immunogen</b>	Synthetic peptide conjugated to KLH (10-30 aa in length) at the C terminus of last 50 aa of human Metabotropic Glutamate Receptor 8.
<b>Positive control</b>	Mouse brain tissue lysate.

Properties

---

<b>Form</b>	Liquid
<b>Storage instructions</b>	Shipped at 4°C. Store at +4°C short term (1-2 weeks). Upon delivery aliquot. Store at -20°C long term.
<b>Storage buffer</b>	Preservative: 0.09% Sodium Azide Constituents: PBS
<b>Purity</b>	Protein G purified
<b>Purification notes</b>	This antibody is purified through a protein G column, eluted out with both high and low pH buffers, neutralized immediately after elution then followed by dialysis against PBS.
<b>Clonality</b>	Polyclonal
<b>Isotype</b>	IgG

Applications

---

Our [Abpromise guarantee](#) covers the use of **ab38571** in the following tested applications.

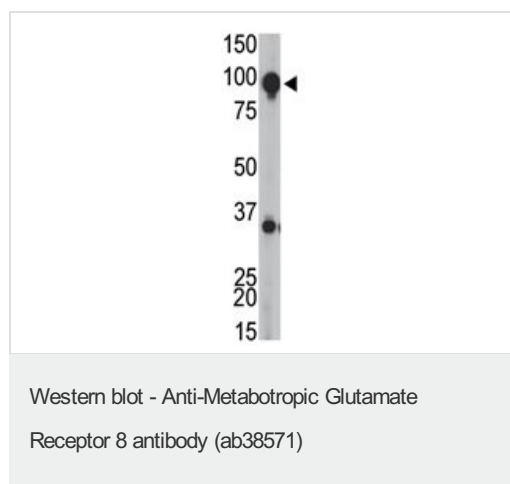
The application notes include recommended starting dilutions; optimal dilutions/concentrations should be determined by the end user.

Application	Abreviews	Notes
ELISA		1/1000.
WB		1/100 - 1/500. Predicted molecular weight: 102 kDa.

## Target

<b>Function</b>	Receptor for glutamate. The activity of this receptor is mediated by a G-protein that inhibits adenylate cyclase activity.
<b>Sequence similarities</b>	Belongs to the G-protein coupled receptor 3 family.
<b>Cellular localization</b>	Cell membrane.

## Images



Anti-Metabotropic Glutamate Receptor 8 antibody (ab38571) at 1/100 dilution + Mouse brain tissue lysate

**Predicted band size:** 102 kDa

**Observed band size:** 100 kDa

**Additional bands at:** 35 kDa. We are unsure as to the identity of these extra bands.

**Please note:** All products are "FOR RESEARCH USE ONLY AND ARE NOT INTENDED FOR DIAGNOSTIC OR THERAPEUTIC USE"

## Our Abpromise to you: Quality guaranteed and expert technical support

- Replacement or refund for products not performing as stated on the datasheet
- Valid for 12 months from date of delivery
- Response to your inquiry within 24 hours
- We provide support in Chinese, English, French, German, Japanese and Spanish
- Extensive multi-media technical resources to help you
- We investigate all quality concerns to ensure our products perform to the highest standards

If the product does not perform as described on this datasheet, we will offer a refund or replacement. For full details of the Abpromise, please visit <https://www.abcam.com/abpromise> or contact our technical team.

## Terms and conditions

- Guarantee only valid for products bought direct from Abcam or one of our authorized distributors