


Product datasheet

Anti-IKB beta antibody ab42507

1 Image

Overview

Product name	Anti-IKB beta antibody
Description	Rabbit polyclonal to IKB beta
Host species	Rabbit
Tested applications	Suitable for: WB, ELISA
Species reactivity	Reacts with: Human Predicted to work with: Mouse, Rat, Cow, Dog 
Immunogen	Synthetic peptide (Human). More details of the immunogen for this antibody are not available.
Positive control	Jurkat Cell Lysate

Properties

Form	Liquid
Storage instructions	Shipped at 4°C. Upon delivery aliquot and store at -20°C. Avoid freeze / thaw cycles.
Storage buffer	Preservative: None Constituents: 2% Sucrose, PBS
Purity	Immunogen affinity purified
Clonality	Polyclonal
Isotype	IgG

Applications

Our [Abpromise guarantee](#) covers the use of **ab42507** in the following tested applications.

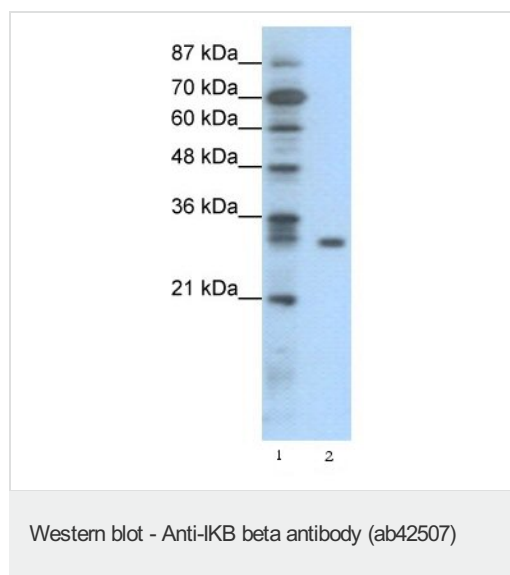
The application notes include recommended starting dilutions; optimal dilutions/concentrations should be determined by the end user.

Application	Abreviews	Notes
WB		Use a concentration of 0.5 µg/ml. Detects a band of approximately 33 kDa (predicted molecular weight: 38 kDa). Good results were obtained when blocked with 5% non-fat dry milk in 0.05% PBS-T.
ELISA		1/1.77778.

Target

Function	Inhibits NF-kappa-B by complexing with and trapping it in the cytoplasm. However, the unphosphorylated form resynthesized after cell stimulation is able to bind NF-kappa-B allowing its transport to the nucleus and protecting it to further NFKBIA-dependent inactivation. Association with inhibitor kappa B-interacting NKIRAS1 and NKIRAS2 prevent its phosphorylation rendering it more resistant to degradation, explaining its slower degradation.
Tissue specificity	Expressed in all tissues examined.
Sequence similarities	Belongs to the NF-kappa-B inhibitor family. Contains 6 ANK repeats.
Post-translational modifications	Phosphorylated by RPS6KA1; followed by degradation. Interaction with NKIRAS1 and NKIRAS2 probably prevents phosphorylation.
Cellular localization	Cytoplasm. Nucleus.

Images



All lanes : Anti-IKB beta antibody (ab42507)
at 0.5 µg/ml

Lane 1 : Marker

Lane 2 : Jurkat Cell Lysate

Secondary

All lanes : HRP conjugated anti-Rabbit IgG
diluted 1:50,000-100,000

Predicted band size: 38 kDa

Differences in calculated versus apparent molecular weight may be due to post-translational modifications.

Please note: All products are "FOR RESEARCH USE ONLY AND ARE NOT INTENDED FOR DIAGNOSTIC OR THERAPEUTIC USE"

Our Abpromise to you: Quality guaranteed and expert technical support

- Replacement or refund for products not performing as stated on the datasheet
- Valid for 12 months from date of delivery
- Response to your inquiry within 24 hours
- We provide support in Chinese, English, French, German, Japanese and Spanish
- Extensive multi-media technical resources to help you

- We investigate all quality concerns to ensure our products perform to the highest standards

If the product does not perform as described on this datasheet, we will offer a refund or replacement. For full details of the Abpromise, please visit <https://www.abcam.com/abpromise> or contact our technical team.

Terms and conditions

- Guarantee only valid for products bought direct from Abcam or one of our authorized distributors