

Product datasheet

Anti-CD11a antibody [B-B15] ab47202

1 Image

Overview

---

<b>Product name</b>	Anti-CD11a antibody [B-B15]
<b>Description</b>	Mouse monoclonal [B-B15] to CD11a
<b>Host species</b>	Mouse
<b>Specificity</b>	ab47202 recognizes the $\alpha$ L integrin of LFA1 complex, a 180 kDa protein.
<b>Tested applications</b>	<b>Suitable for:</b> Flow Cyt
<b>Species reactivity</b>	<b>Reacts with:</b> Human
<b>Immunogen</b>	HL60 cell line (Human).
<b>Positive control</b>	Lymphocytes.

Properties

---

<b>Form</b>	Liquid
<b>Storage instructions</b>	Shipped at 4°C. Store at +4°C short term (1-2 weeks). Upon delivery aliquot. Store at -20°C or -80°C. Avoid freeze / thaw cycle.
<b>Storage buffer</b>	Azide free Constituents: PBS
<b>Purity</b>	Ion Exchange Chromatography
<b>Purification notes</b>	Sterile-filtered through 0.22 $\mu$ m and treated to remove endotoxins (Carrier and preservative free).
<b>Clonality</b>	Monoclonal
<b>Clone number</b>	B-B15
<b>Myeloma</b>	x63-Ag8.653
<b>Isotype</b>	IgG1

Applications

---

Our [Abpromise guarantee](#) covers the use of **ab47202** in the following tested applications.

The application notes include recommended starting dilutions; optimal dilutions/concentrations should be determined by the end user.

Application	Abreviews	Notes
-------------	-----------	-------

Flow Cyt

Use 10µl for 10<sup>6</sup> cells.

[ab170190](#) - Mouse monoclonal IgG1, is suitable for use as an isotype control with this antibody.

## Target

### Function

Integrin alpha-L/beta-2 is a receptor for ICAM1, ICAM2, ICAM3 and ICAM4. It is involved in a variety of immune phenomena including leukocyte-endothelial cell interaction, cytotoxic T-cell mediated killing, and antibody dependent killing by granulocytes and monocytes.

### Tissue specificity

Leukocytes.

### Sequence similarities

Belongs to the integrin alpha chain family.

Contains 7 FG-GAP repeats.

Contains 1 VWFA domain.

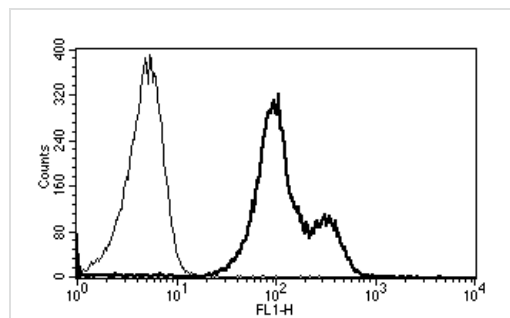
### Domain

The integrin I-domain (insert) is a VWFA domain. Integrins with I-domains do not undergo protease cleavage.

### Cellular localization

Membrane.

## Images



A typical staining pattern using ab47202 of lymphocytes.

Flow Cytometry - Anti-CD11a antibody [B-B15]  
(ab47202)

**Please note:** All products are "FOR RESEARCH USE ONLY AND ARE NOT INTENDED FOR DIAGNOSTIC OR THERAPEUTIC USE"

## Our Abpromise to you: Quality guaranteed and expert technical support

- Replacement or refund for products not performing as stated on the datasheet
- Valid for 12 months from date of delivery
- Response to your inquiry within 24 hours
- We provide support in Chinese, English, French, German, Japanese and Spanish
- Extensive multi-media technical resources to help you
- We investigate all quality concerns to ensure our products perform to the highest standards

If the product does not perform as described on this datasheet, we will offer a refund or replacement. For full details of the Abpromise, please visit <https://www.abcam.com/abpromise> or contact our technical team.

## Terms and conditions

---

- Guarantee only valid for products bought direct from Abcam or one of our authorized distributors