


Product datasheet

Anti-Ezrin antibody ab47418

1 Image

Overview

Product name	Anti-Ezrin antibody
Description	Rabbit polyclonal to Ezrin
Host species	Rabbit
Specificity	This antibody detects endogenous levels of total Ezrin protein.
Tested applications	Suitable for: WB, ELISA
Species reactivity	Reacts with: Human Predicted to work with: Mouse, Rat 
Immunogen	Synthetic non-phosphopeptide derived from human Ezrin around the phosphorylation site of tyrosine 566 (Y-K-T ^P -L-R).
Positive control	A431 cell extracts

Properties

Form	Liquid
Storage instructions	Shipped at 4°C. Store at -20°C. Stable for 12 months at -20°C.
Storage buffer	Preservative: 0.02% Sodium Azide Constituents: 50% Glycerol, PBS (without Mg ²⁺ and Ca ²⁺), 150mM Sodium chloride, pH 7.4
Purity	Immunogen affinity purified
Purification notes	This antibody was affinity-purified from rabbit antiserum by affinity-chromatography using epitope-specific immunogen.
Clonality	Polyclonal
Isotype	IgG

Applications

Our [Abpromise guarantee](#) covers the use of **ab47418** in the following tested applications.

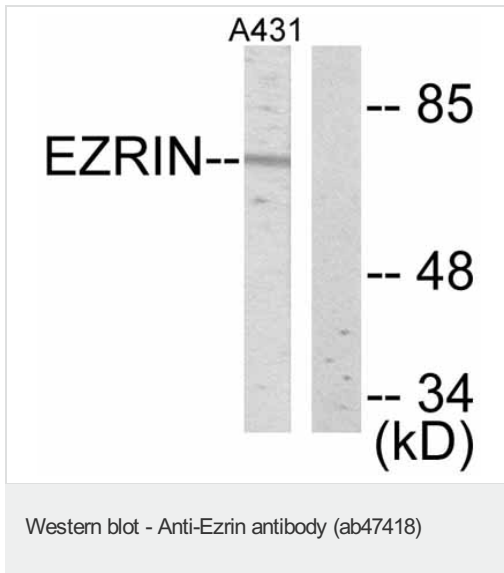
The application notes include recommended starting dilutions; optimal dilutions/concentrations should be determined by the end user.

Application	Abreviews	Notes
WB		1/500 - 1/1000. Detects a band of approximately 69 kDa (predicted molecular weight: 69 kDa).
ELISA		1/20000.

Target

Function	Probably involved in connections of major cytoskeletal structures to the plasma membrane. In epithelial cells, required for the formation of microvilli and membrane ruffles on the apical pole. Along with PLEKHG6, required for normal macropinocytosis.
Tissue specificity	Expressed in cerebral cortex, basal ganglia, hippocampus, hypophysis, and optic nerve. Weakly expressed in brain stem and diencephalon. Stronger expression was detected in gray matter of frontal lobe compared to white matter (at protein level). Component of the microvilli of intestinal epithelial cells. Preferentially expressed in astrocytes of hippocampus, frontal cortex, thalamus, parahippocampal cortex, amygdala, insula, and corpus callosum. Not detected in neurons in most tissues studied.
Sequence similarities	Contains 1 FERM domain.
Developmental stage	Very strong staining is detected in the Purkinje cell layer and in part of the molecular layer of the infant brain compared to adult brain.
Post-translational modifications	Phosphorylated by tyrosine-protein kinases.
Cellular localization	Apical cell membrane. Cell projection. Cell projection > microvillus membrane. Cell projection > ruffle membrane. Cytoplasm > cell cortex. Cytoplasm > cytoskeleton. Localization to the apical membrane of parietal cells depends on the interaction with MPP5. Localizes to cell extensions and peripheral processes of astrocytes (By similarity). Microvillar peripheral membrane protein.

Images



All lanes : Anti-Ezrin antibody (ab47418) at 1/500 dilution

Lane 1 : A431 cell extracts with EGF treatment (200ng/ml, 30min)

Lane 2 : A431 cell extracts with EGF treatment (200ng/ml, 30min) with blocking peptide

Predicted band size: 69 kDa

Observed band size: 69 kDa

Typically 5-30ug of total protein was loaded per lane of the gel.

Please note: All products are "FOR RESEARCH USE ONLY AND ARE NOT INTENDED FOR DIAGNOSTIC OR THERAPEUTIC USE"

Our Abpromise to you: Quality guaranteed and expert technical support

- Replacement or refund for products not performing as stated on the datasheet
- Valid for 12 months from date of delivery
- Response to your inquiry within 24 hours
- We provide support in Chinese, English, French, German, Japanese and Spanish
- Extensive multi-media technical resources to help you
- We investigate all quality concerns to ensure our products perform to the highest standards

If the product does not perform as described on this datasheet, we will offer a refund or replacement. For full details of the Abpromise, please visit <https://www.abcam.com/abpromise> or contact our technical team.

Terms and conditions

- Guarantee only valid for products bought direct from Abcam or one of our authorized distributors