


Product datasheet

Anti-GAB1 (phospho Y627) antibody ab47771

1 References 1 Image

Overview

Product name	Anti-GAB1 (phospho Y627) antibody
Description	Rabbit polyclonal to GAB1 (phospho Y627)
Host species	Rabbit
Specificity	This antibody detects Gab1 only when phosphorylated at tyrosine 627.
Tested applications	Suitable for: WB, ELISA
Species reactivity	Reacts with: Human Predicted to work with: Mouse 
Immunogen	Synthesized phosphopeptide derived from human Gab1 around the phosphorylation site of tyrosine 627 (V-E-Y _P -L-D).
Positive control	HuvEc cell extract

Properties

Form	Liquid
Storage instructions	Shipped at 4°C. Store at -20°C. Stable for 12 months at -20°C.
Storage buffer	Preservative: 0.02% Sodium Azide Constituents: 50% Glycerol, PBS (without Mg ²⁺ and Ca ²⁺), 150mM Sodium chloride, pH 7.4
Purity	Immunogen affinity purified
Purification notes	The antibody was affinity-purified from rabbit antiserum by affinity-chromatography using epitope-specific phosphopeptide. The antibody against non-phosphopeptide was removed by chromatography using non-phosphopeptide corresponding to the phosphorylation site.
Clonality	Polyclonal
Isotype	IgG

Applications

Our [Abpromise guarantee](#) covers the use of **ab47771** in the following tested applications.

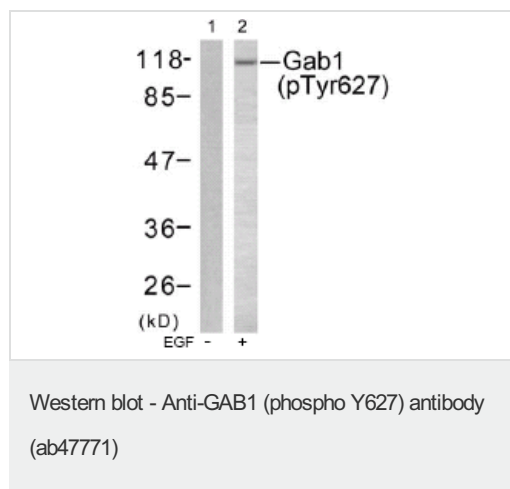
The application notes include recommended starting dilutions; optimal dilutions/concentrations should be determined by the end user.

Application	Abreviews	Notes
WB		1/500 - 1/1000. Detects a band of approximately 115 kDa (predicted molecular weight: 77 kDa).
ELISA		1/10000.

Target

Function	Probably involved in EGF and insulin receptor signaling.
Sequence similarities	Belongs to the GAB family. Contains 1 PH domain.
Post-translational modifications	Phosphorylated on tyrosine residue(s) by the epidermal growth factor receptor (EGFR) and the insulin receptor (INSR). Tyrosine phosphorylation of GAB1 mediates interaction with several proteins that contain SH2 domains.

Images



All lanes : Anti-GAB1 (phospho Y627) antibody (ab47771) at 1/500 dilution

Lane 1 : HuvEc cell extract, untreated.

Lane 2 : HuvEc cell extract treated with EGF (200ng/ml, 10min)

Predicted band size: 77 kDa

Observed band size: 115 kDa

Please note: All products are "FOR RESEARCH USE ONLY AND ARE NOT INTENDED FOR DIAGNOSTIC OR THERAPEUTIC USE"

Our Abpromise to you: Quality guaranteed and expert technical support

- Replacement or refund for products not performing as stated on the datasheet
- Valid for 12 months from date of delivery
- Response to your inquiry within 24 hours
- We provide support in Chinese, English, French, German, Japanese and Spanish
- Extensive multi-media technical resources to help you
- We investigate all quality concerns to ensure our products perform to the highest standards

If the product does not perform as described on this datasheet, we will offer a refund or replacement. For full details of the Abpromise, please visit <https://www.abcam.com/abpromise> or contact our technical team.

Terms and conditions

- Guarantee only valid for products bought direct from Abcam or one of our authorized distributors