

## Product datasheet

# Anti-PSMD14 antibody ab49175

★★★★☆ 2 Abreviews 1 Image

### Overview

<b>Product name</b>	Anti-PSMD14 antibody
<b>Description</b>	Rabbit polyclonal to PSMD14
<b>Host species</b>	Rabbit
<b>Tested applications</b>	<b>Suitable for:</b> WB, ELISA
<b>Species reactivity</b>	<b>Reacts with:</b> Human <b>Predicted to work with:</b> Mouse, Rat, Cow, Dog, Drosophila melanogaster, Zebrafish
<b>Immunogen</b>	A region within synthetic peptide: MDRLRLGGG MPGLGQGPPT DAPAVDTAEQ VYSSLALLK MLKHGRAGVP, corresponding to N terminal amino acids 1-50 of Human PSMD14 <a href="#">Run BLAST with ExPASy</a> <a href="#">Run BLAST with NCBI</a>
<b>Positive control</b>	HepG2 cell lysate

### Properties

<b>Form</b>	Liquid
<b>Storage instructions</b>	Shipped at 4°C. Upon delivery aliquot and store at -20°C. Avoid freeze / thaw cycles.
<b>Storage buffer</b>	Preservative: 0.09% Sodium azide Constituents: 2% Sucrose, PBS
<b>Purity</b>	Protein A purified
<b>Clonality</b>	Polyclonal
<b>Isotype</b>	IgG

### Applications

Our [Abpromise guarantee](#) covers the use of **ab49175** in the following tested applications.

The application notes include recommended starting dilutions; optimal dilutions/concentrations should be determined by the end user.

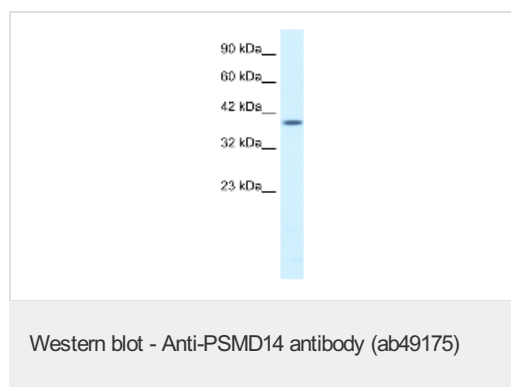
Application	Abreviews	Notes
WB	★★★★☆	Use a concentration of 1.25 µg/ml. Detects a band of approximately 35 kDa (predicted molecular weight: 35 kDa). Good results were obtained when blocked with 5% non-fat dry milk in 0.05% PBS-T.

Application	Abreviews	Notes
ELISA		Use at an assay dependent concentration. Titre using peptide based assay: 1:12500.

## Target

<b>Function</b>	Metalloprotease component of the 26S proteasome that specifically cleaves 'Lys-63'-linked polyubiquitin chains. The 26S proteasome is involved in the ATP-dependent degradation of ubiquitinated proteins. The function of the 'Lys-63'-specific deubiquitination of the proteasome is unclear.
<b>Tissue specificity</b>	Widely expressed. Highest levels in heart and skeletal muscle.
<b>Sequence similarities</b>	Belongs to the peptidase M67A family. PSMD14 subfamily. Contains 1 MPN (JAB/Mov34) domain.

## Images



Anti-PSMD14 antibody (ab49175) at 1.25 µg/ml + HepG2 cell lysate at 10 µg with 5% skimmed milk in PBS

### Secondary

HRP conjugated anti-Rabbit IgG at 1/50000 dilution

Developed using the ECL technique.

**Predicted band size:** 35 kDa

**Observed band size:** 35 kDa

Gel concentration: 12%

**Please note:** All products are "FOR RESEARCH USE ONLY AND ARE NOT INTENDED FOR DIAGNOSTIC OR THERAPEUTIC USE"

## Our Promise to you: Quality guaranteed and expert technical support

- Replacement or refund for products not performing as stated on the datasheet
- Valid for 12 months from date of delivery
- Response to your inquiry within 24 hours
- We provide support in Chinese, English, French, German, Japanese and Spanish
- Extensive multi-media technical resources to help you
- We investigate all quality concerns to ensure our products perform to the highest standards

If the product does not perform as described on this datasheet, we will offer a refund or replacement. For full details of the Abpromise, please visit <https://www.abcam.com/abpromise> or contact our technical team.

## Terms and conditions

---

- Guarantee only valid for products bought direct from Abcam or one of our authorized distributors