


Product datasheet

Anti-TCF21 antibody ab49475

6 References 1 Image

Overview

Product name	Anti-TCF21 antibody
Description	Rabbit polyclonal to TCF21
Host species	Rabbit
Specificity	This antibody is specific for TCF21 protein.
Tested applications	Suitable for: WB, ICC/IF, IHC-Fr
Species reactivity	Reacts with: Human Predicted to work with: Mouse, Rat, Cow, Xenopus laevis 
Immunogen	A synthetic peptide made to an internal region of human TCF21 protein (within residues 100-179).
Positive control	<div style="border: 1px solid #ccc; padding: 5px; margin-bottom: 5px;"> Purchase matching WB positive control: Recombinant Human TCF21 protein > </div> HeLa whole cell lysate.

Properties

Form	Liquid
Storage instructions	Shipped at 4°C. Store at +4°C short term (1-2 weeks). Store at -20°C or -80°C. Avoid freeze / thaw cycle.
Storage buffer	Preservative: 0.1% Sodium azide Constituent: Tris citrate/phosphate
Purity	Immunogen affinity purified
Clonality	Polyclonal
Isotype	IgG

Applications

Our [Abpromise guarantee](#) covers the use of **ab49475** in the following tested applications.

The application notes include recommended starting dilutions; optimal dilutions/concentrations should be determined by the end user.

Application	Abreviews	Notes
WB		Use a concentration of 2 µg/ml. Detects a band of approximately 17 kDa (predicted molecular weight: 20 kDa). May see additional bands at ~25 kDa and above 50 kDa.
ICC/IF		Use at an assay dependent concentration. PubMed: 21209317
IHC-Fr		Use at an assay dependent concentration. PubMed: 24676100

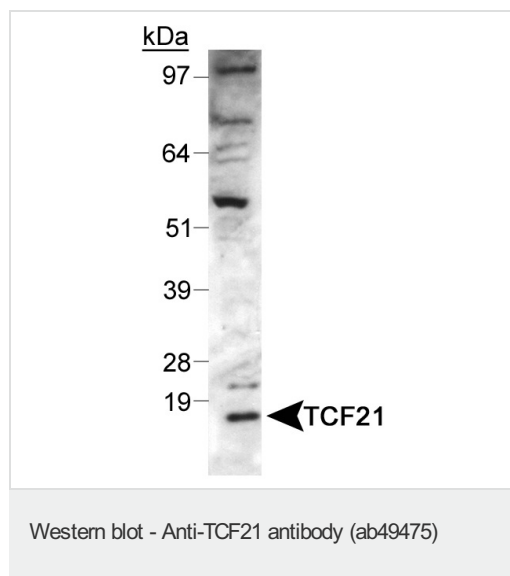
Target

Function Involved in epithelial-mesenchymal interactions in kidney and lung morphogenesis that include epithelial differentiation and branching morphogenesis. May play a role in the specification or differentiation of one or more subsets of epicardial cell types.

Sequence similarities Contains 1 basic helix-loop-helix (bHLH) domain.

Cellular localization Nucleus.

Images



Anti-TCF21 antibody (ab49475) at 2 µg/ml + HeLa whole cell lysate

Predicted band size: 20 kDa

Observed band size: 17 kDa

[why is the actual band size different from the predicted?](#)

Please note: All products are "FOR RESEARCH USE ONLY AND ARE NOT INTENDED FOR DIAGNOSTIC OR THERAPEUTIC USE"

Our Abpromise to you: Quality guaranteed and expert technical support

- Replacement or refund for products not performing as stated on the datasheet
- Valid for 12 months from date of delivery
- Response to your inquiry within 24 hours
- We provide support in Chinese, English, French, German, Japanese and Spanish
- Extensive multi-media technical resources to help you
- We investigate all quality concerns to ensure our products perform to the highest standards

If the product does not perform as described on this datasheet, we will offer a refund or replacement. For full details of the Abpromise, please visit <https://www.abcam.com/abpromise> or contact our technical team.

Terms and conditions

- Guarantee only valid for products bought direct from Abcam or one of our authorized distributors