

Product datasheet

Anti-Flotillin 1 antibody ab50671

6 References 1 Image

Overview

Product name	Anti-Flotillin 1 antibody
Description	Rabbit polyclonal to Flotillin 1
Host species	Rabbit
Tested applications	Suitable for: WB, ICC/IF
Species reactivity	Reacts with: Mouse, Rat, Human Predicted to work with: Cow, Pig, Macaque monkey, Rhesus monkey, Orangutan
Immunogen	Synthetic peptide corresponding to amino acid residues 413-428 of mouse flotillin 1 with an N terminal added cysteine, conjugated to KLH. The corresponding sequence is identical in Rat and differs by one amino acid in Human Run BLAST with ExPASy Run BLAST with NCBI
Positive control	Human HEK-293T cells and whole cell extract of mouse/rat lung.

Properties

Form	Liquid
Storage instructions	Shipped at 4°C. Store at +4°C short term (1-2 weeks). Upon delivery aliquot. Store at -20°C or -80°C. Avoid freeze / thaw cycle.
Storage buffer	Preservative: 15mM Sodium Azide Constituents: 0.01M PBS, pH 7.4
Purity	Immunogen affinity purified
Clonality	Polyclonal
Isotype	IgG

Applications

Our [Abpromise guarantee](#) covers the use of **ab50671** in the following tested applications.

The application notes include recommended starting dilutions; optimal dilutions/concentrations should be determined by the end user.

Application	Abreviews	Notes
WB		

Application	Abreviews	Notes
-------------	-----------	-------

ICC/IF

Application notes

ICC/IF: Use at a concentration of 5 - 10 µg/ml (recommended with Human HEK-293T cells).
 WB: Use at a concentration of 0.5 - 2.0 µg/ml (recommended with whole cell extract of mouse/rat lung). Detects a band of approximately 48 kDa (predicted molecular weight: 48 kDa).

Not yet tested in other applications.
 Optimal dilutions/concentrations should be determined by the end user.

Target

Function

May act as a scaffolding protein within caveolar membranes, functionally participating in formation of caveolae or caveolae-like vesicles.

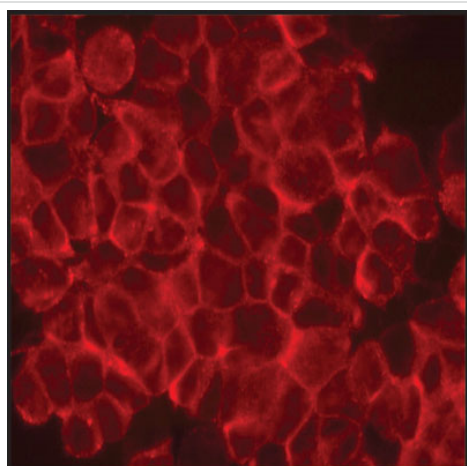
Sequence similarities

Belongs to the band 7/mec-2 family. Flotillin subfamily.

Cellular localization

Cell membrane. Membrane > caveola. Melanosome. Endosome. Membrane-associated protein of caveolae. Identified by mass spectrometry in melanosome fractions from stage I to stage IV.

Images



Indirect Immunofluorescence. Human 293T cells were fixed and permeabilized with 4% paraformaldehyde followed by 0.5% Triton-X-100. Fixed cells were stained with 10 µg/mL Anti-Flotillin 1. The antibody was developed with Goat Anti-Rabbit IgG, Cy3 conjugate.

Immunocytochemistry/ Immunofluorescence - Anti-Flotillin 1 antibody (ab50671)

Please note: All products are "FOR RESEARCH USE ONLY AND ARE NOT INTENDED FOR DIAGNOSTIC OR THERAPEUTIC USE"

Our Abpromise to you: Quality guaranteed and expert technical support

- Replacement or refund for products not performing as stated on the datasheet
- Valid for 12 months from date of delivery
- Response to your inquiry within 24 hours

- We provide support in Chinese, English, French, German, Japanese and Spanish
- Extensive multi-media technical resources to help you
- We investigate all quality concerns to ensure our products perform to the highest standards

If the product does not perform as described on this datasheet, we will offer a refund or replacement. For full details of the Abpromise, please visit <https://www.abcam.com/abpromise> or contact our technical team.

Terms and conditions

- Guarantee only valid for products bought direct from Abcam or one of our authorized distributors