

Product datasheet

Anti-Attractin antibody [9H8] ab50864

1 Image

Overview

| | |
|----------------------------|-------------------------------------|
| Product name | Anti-Attractin antibody [9H8] |
| Description | Mouse monoclonal [9H8] to Attractin |
| Host species | Mouse |
| Tested applications | Suitable for: WB, IP |
| Species reactivity | Reacts with: Human |
| Immunogen | Protein purified from Human plasma |
| Positive control | Human Plasma |

Properties

| | |
|-----------------------------|--|
| Form | Liquid |
| Storage instructions | Shipped at 4°C. Store at -20°C. Stable for 12 months at -20°C. |
| Storage buffer | Preservative: None Constituents: 50% Glycerol, PBS |
| Clonality | Monoclonal |
| Clone number | 9H8 |
| Isotype | IgG1 |
| Light chain type | kappa |

Applications

Our [Abpromise guarantee](#) covers the use of **ab50864** in the following tested applications.

The application notes include recommended starting dilutions; optimal dilutions/concentrations should be determined by the end user.

| Application | Abreviews | Notes |
|-------------|-----------|-------|
|-------------|-----------|-------|

WB

IP

| | |
|--------------------------|---------------------------------|
| Application notes | IP: Use 1-2ug for 400ul lysate. |
|--------------------------|---------------------------------|

WB: 1/1000. Predicted molecular weight: 158 kDa.

Not yet tested in other applications.

Optimal dilutions/concentrations should be determined by the end user.

Target

Function

Involved in the initial immune cell clustering during inflammatory response and may regulate chemotactic activity of chemokines. May play a role in melanocortin signaling pathways that regulate energy homeostasis and hair color. Low-affinity receptor for agouti (By similarity). Has a critical role in normal myelination in the central nervous system.

Tissue specificity

Isoform 2 is detected in plasma (at protein level). Expressed and secreted by activated T lymphocytes. Expressed at low to moderate levels in peripheral blood leukocytes, spleen, lymph node, tonsil, bone marrow and fetal liver. At very low levels found in thymus. Isoform 2 is the major isoform in peripheral blood leukocytes.

Sequence similarities

Contains 1 C-type lectin domain.
Contains 1 CUB domain.
Contains 1 EGF-like domain.
Contains 6 Kelch repeats.
Contains 2 laminin EGF-like domains.
Contains 4 PSI domains.

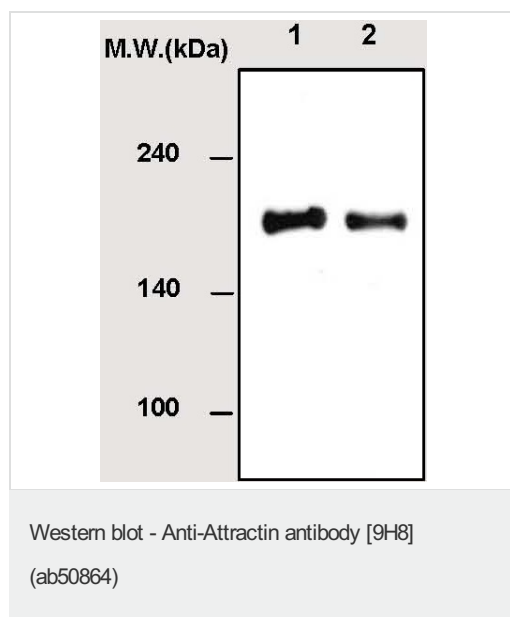
Post-translational modifications

Heavily glycosylated.

Cellular localization

Secreted and Cell membrane.

Images



All lanes : Anti-Attractin antibody [9H8] (ab50864) at 1/1000 dilution

Lane 1 : Attractin isolated from human plasma

Lane 2 : Human plasma

Predicted band size: 158 kDa

Observed band size: 190 kDa

Please note: All products are "FOR RESEARCH USE ONLY AND ARE NOT INTENDED FOR DIAGNOSTIC OR THERAPEUTIC USE"

Our Abpromise to you: Quality guaranteed and expert technical support

- Replacement or refund for products not performing as stated on the datasheet
- Valid for 12 months from date of delivery
- Response to your inquiry within 24 hours

- We provide support in Chinese, English, French, German, Japanese and Spanish
- Extensive multi-media technical resources to help you
- We investigate all quality concerns to ensure our products perform to the highest standards

If the product does not perform as described on this datasheet, we will offer a refund or replacement. For full details of the Abpromise, please visit <https://www.abcam.com/abpromise> or contact our technical team.

Terms and conditions

- Guarantee only valid for products bought direct from Abcam or one of our authorized distributors