


Product datasheet

Anti-P70 S6 Kinase beta (phospho T421 + S424) antibody
ab53029

1 Image

Overview

Product name	Anti-P70 S6 Kinase beta (phospho T421 + S424) antibody
Description	Rabbit polyclonal to P70 S6 Kinase beta (phospho T421 + S424)
Host species	Rabbit
Specificity	Detects endogenous levels of Human p70 S6 Kinase beta only when phosphorylated at threonine 421 or serine 424. (The equivalent residues in other species are: Mouse: Thr444,Ser447; Rat: Thr421,Ser424)
Tested applications	Suitable for: WB, ELISA
Species reactivity	Reacts with: Mouse, Human Predicted to work with: Rat 
Immunogen	A synthetic phosphopeptide derived from human p70 S6 Kinase beta around the phosphorylation site of threonine 421 and serine 424(R-T ^P -P-V-S ^P).
Positive control	Extracts from NIH/3T3 cells, treated with EGF (200ng/ml, 30mins).

Properties

Form	Liquid
Storage instructions	Shipped at 4°C. Store at -20°C. Stable for 12 months at -20°C.
Storage buffer	Preservative: 0.02% Sodium Azide Constituents: 50% Glycerol, PBS (without Mg ²⁺ and Ca ²⁺), 150mM Sodium chloride, pH 7.4
Purity	Immunogen affinity purified
Purification notes	Affinity-purified from rabbit antiserum by affinity-chromatography using epitope-specific phosphopeptide. The antibody against non-phosphopeptide was removed by chromatography using non-phosphopeptide corresponding to the phosphorylation site.
Clonality	Polyclonal
Isotype	IgG

Applications

Our [Abpromise guarantee](#) covers the use of **ab53029** in the following tested applications.

The application notes include recommended starting dilutions; optimal dilutions/concentrations should be determined by the end user.

Application	Abreviews	Notes
WB		1/500 - 1/1000. Detects a band of approximately 80 kDa.
ELISA		1/10000.

Target

Function

Phosphorylates specifically ribosomal protein S6.

Sequence similarities

Belongs to the protein kinase superfamily. AGC Ser/Thr protein kinase family. S6 kinase subfamily.

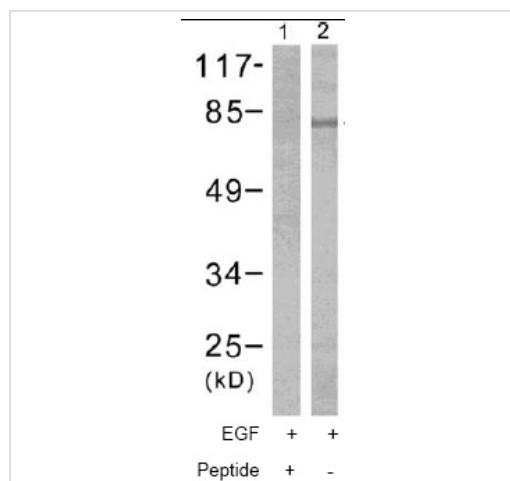
Contains 1 AGC-kinase C-terminal domain.

Contains 1 protein kinase domain.

Post-translational modifications

Phosphorylated upon DNA damage, probably by ATM or ATR.

Images



Western blot - Anti-P70 S6 Kinase beta (phospho T421 + S424) antibody (ab53029)

All lanes : Anti-P70 S6 Kinase beta (phospho T421 + S424) antibody (ab53029) at 1/500 dilution

Lane 1 : NIH 3T3 cell extract treated with EGF (200ng/ml, 30mins) with immunising peptide

Lane 2 : NIH 3T3 cell extract treated with EGF (200ng/ml, 30mins)

Observed band size: 79 kDa

Please note: All products are "FOR RESEARCH USE ONLY AND ARE NOT INTENDED FOR DIAGNOSTIC OR THERAPEUTIC USE"

Our Abpromise to you: Quality guaranteed and expert technical support

- Replacement or refund for products not performing as stated on the datasheet
- Valid for 12 months from date of delivery
- Response to your inquiry within 24 hours
- We provide support in Chinese, English, French, German, Japanese and Spanish
- Extensive multi-media technical resources to help you

- We investigate all quality concerns to ensure our products perform to the highest standards

If the product does not perform as described on this datasheet, we will offer a refund or replacement. For full details of the Abpromise, please visit <https://www.abcam.com/abpromise> or contact our technical team.

Terms and conditions

- Guarantee only valid for products bought direct from Abcam or one of our authorized distributors