


Product datasheet

# Anti-Guanylyl Cyclase beta 1 antibody, prediluted ab53638

1 Image

Overview

<b>Product name</b>	Anti-Guanylyl Cyclase beta 1 antibody, prediluted
<b>Description</b>	Rabbit polyclonal to Guanylyl Cyclase beta 1, prediluted
<b>Host species</b>	Rabbit
<b>Tested applications</b>	<b>Suitable for:</b> IHC-P
<b>Species reactivity</b>	<b>Reacts with:</b> Human <b>Predicted to work with:</b> Mouse, Rat, Cow, Dog, Pig, Xenopus laevis, Pufferfish 
<b>Immunogen</b>	Synthetic peptide within Human Guanylyl Cyclase beta 1 aa 150-250 (internal sequence). The exact sequence is proprietary.
<b>Positive control</b>	Brain

Properties

<b>Form</b>	Prediluted
<b>Storage instructions</b>	Shipped at 4°C. Store at +4°C.
<b>Storage buffer</b>	pH: 7.60 Preservative: 0.1% Sodium azide Constituents: 1% BSA, 0.605% Tris
<b>Purity</b>	Immunogen affinity purified
<b>Clonality</b>	Polyclonal
<b>Isotype</b>	IgG

Applications

Our [Abpromise guarantee](#) covers the use of **ab53638** in the following tested applications.

The application notes include recommended starting dilutions; optimal dilutions/concentrations should be determined by the end user.

Application	Abreviews	Notes
IHC-P		

## Application notes

IHC-P: 1/1. Staining of formalin-fixed tissues requires boiling tissue sections in 10mM citrate buffer, pH 6.0 for 10 min followed by cooling at RT for 20 min.

Not yet tested in other applications.

Optimal dilutions/concentrations should be determined by the end user.

## Target

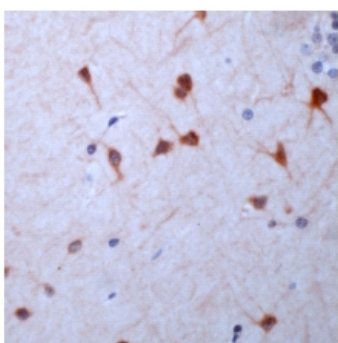
### Sequence similarities

Belongs to the adenylyl cyclase class-4/guanylyl cyclase family.  
Contains 1 guanylate cyclase domain.

### Cellular localization

Cytoplasm.

## Images



Ab53638 at a ready to use dilution staining human cerebellum; formalin fixed paraffin embedded.

Immunohistochemistry (Formalin/PFA-fixed paraffin-embedded sections) - Anti-Guanylyl Cyclase beta 1 antibody, prediluted (ab53638)

**Please note:** All products are "FOR RESEARCH USE ONLY AND ARE NOT INTENDED FOR DIAGNOSTIC OR THERAPEUTIC USE"

## Our Abpromise to you: Quality guaranteed and expert technical support

- Replacement or refund for products not performing as stated on the datasheet
- Valid for 12 months from date of delivery
- Response to your inquiry within 24 hours
- We provide support in Chinese, English, French, German, Japanese and Spanish
- Extensive multi-media technical resources to help you
- We investigate all quality concerns to ensure our products perform to the highest standards

If the product does not perform as described on this datasheet, we will offer a refund or replacement. For full details of the Abpromise, please visit <https://www.abcam.com/abpromise> or contact our technical team.

## Terms and conditions

- Guarantee only valid for products bought direct from Abcam or one of our authorized distributors