

## Product datasheet

# Anti-MCL1 antibody ab53709

[4 References](#) [4 Images](#)

### Overview

<b>Product name</b>	Anti-MCL1 antibody
<b>Description</b>	Rabbit polyclonal to MCL1
<b>Host species</b>	Rabbit
<b>Tested applications</b>	<b>Suitable for:</b> WB, IHC-P, ELISA, ICC/IF
<b>Species reactivity</b>	<b>Reacts with:</b> Mouse, Rat, Human
<b>Immunogen</b>	Synthetic peptide derived from human MCL1.
<b>Positive control</b>	Human breast carcinoma tissue Extracts from HuvEc cells.

### Properties

<b>Form</b>	Liquid
<b>Storage instructions</b>	Shipped at 4°C. Store at -20°C. Stable for 12 months at -20°C.
<b>Storage buffer</b>	Preservative: 0.02% Sodium Azide Constituents: 50% Glycerol, PBS, 150mM Sodium chloride, pH 7.4
<b>Purity</b>	Immunogen affinity purified
<b>Clonality</b>	Polyclonal
<b>Isotype</b>	IgG

### Applications

Our [Abpromise guarantee](#) covers the use of **ab53709** in the following tested applications.

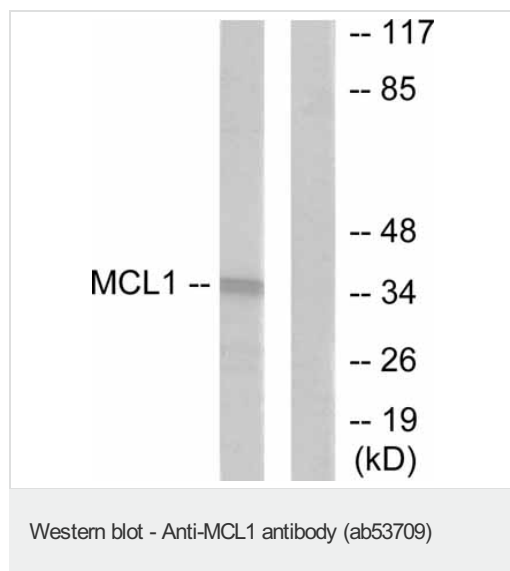
The application notes include recommended starting dilutions; optimal dilutions/concentrations should be determined by the end user.

Application	Abreviews	Notes
WB		1/500 - 1/1000. Detects a band of approximately 37 kDa (predicted molecular weight: 37 kDa).
IHC-P		Use at an assay dependent concentration.
ELISA		1/20000.
ICC/IF		Use a concentration of 1 µg/ml.

## Target

<b>Function</b>	Involved in the regulation of apoptosis versus cell survival, and in the maintenance of viability but not of proliferation. Mediates its effects by interactions with a number of other regulators of apoptosis. Isoform 1 inhibits apoptosis. Isoform 2 promotes apoptosis.
<b>Sequence similarities</b>	Belongs to the Bcl-2 family.
<b>Post-translational modifications</b>	Cleaved by CASP3 during apoptosis. In intact cells cleavage occurs preferentially after Asp-127, yielding a pro-apoptotic 28 kDa C-terminal fragment. Rapidly degraded in the absence of phosphorylation on Thr-163 in the PEST region. Phosphorylated on Thr-163. Treatment with taxol or okadaic acid induces phosphorylation on additional sites.
<b>Cellular localization</b>	Membrane. Cytoplasm. Mitochondrion. Nucleus > nucleoplasm. Cytoplasmic, associated with mitochondria.

## Images



**All lanes :** Anti-MCL1 antibody (ab53709) at 1/500 dilution

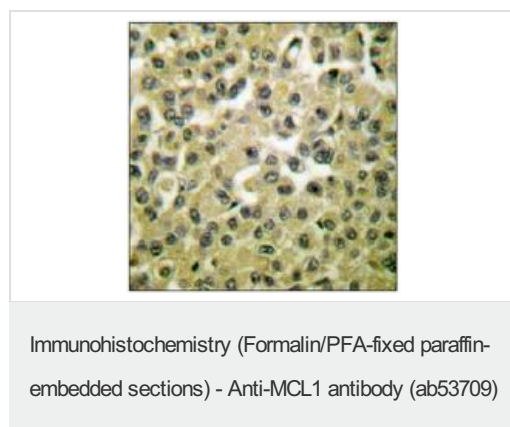
**Lane 1 :** Extracts from HuvEc cells minus the immunising peptide

**Lane 2 :** Extracts from HuvEc cells plus the immunising peptide

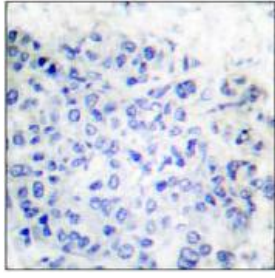
**Predicted band size:** 37 kDa

**Observed band size:** 37 kDa

**Additional bands at:** 28 kDa. We are unsure as to the identity of these extra bands.

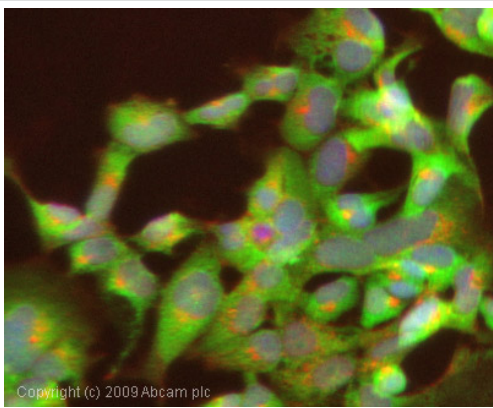


ab53709, at a 1/50 dilution, minus immunising peptide, staining Human MCL1 in Breast Carcinoma, using Immunohistochemistry, Paraffin embedded tissue.



Immunohistochemistry (Formalin/PFA-fixed paraffin-embedded sections) - Anti-MCL1 antibody (ab53709)

ab53709, at a 1/50 dilution, plus immunising peptide, staining Human MCL1 in Breast Carcinoma, using Immunohistochemistry, Paraffin embedded tissue.



Immunocytochemistry/ Immunofluorescence - Anti-MCL1 antibody (ab53709)

ICC/IF image of ab53709 stained Hek293 cells. The cells were 4% PFA fixed (10 min) and then incubated in 1%BSA / 10% normal goat serum / 0.3M glycine in 0.1% PBS-Tween for 1h to permeabilise the cells and block non-specific protein-protein interactions. The cells were then incubated with the antibody (ab53709, 1µg/ml) overnight at +4°C. The secondary antibody (green) was Alexa Fluor® 488 goat anti-rabbit IgG (H+L) used at a 1/1000 dilution for 1h. Alexa Fluor® 594 WGA was used to label plasma membranes (red) at a 1/200 dilution for 1h. DAPI was used to stain the cell nuclei (blue) at a concentration of 1.43µM.

**Please note:** All products are "FOR RESEARCH USE ONLY AND ARE NOT INTENDED FOR DIAGNOSTIC OR THERAPEUTIC USE"

### Our Abpromise to you: Quality guaranteed and expert technical support

- Replacement or refund for products not performing as stated on the datasheet
- Valid for 12 months from date of delivery
- Response to your inquiry within 24 hours
- We provide support in Chinese, English, French, German, Japanese and Spanish
- Extensive multi-media technical resources to help you
- We investigate all quality concerns to ensure our products perform to the highest standards

If the product does not perform as described on this datasheet, we will offer a refund or replacement. For full details of the Abpromise, please visit <https://www.abcam.com/abpromise> or contact our technical team.

### Terms and conditions

- Guarantee only valid for products bought direct from Abcam or one of our authorized distributors