

Product datasheet

# Anti-DNA Polymerase delta, catalytic subunit antibody [2761C6a] ab54282

1 Image

Overview

<b>Product name</b>	Anti-DNA Polymerase delta, catalytic subunit antibody [2761C6a]
<b>Description</b>	Mouse monoclonal [2761C6a] to DNA Polymerase delta, catalytic subunit
<b>Host species</b>	Mouse
<b>Tested applications</b>	<b>Suitable for:</b> Dot blot, WB
<b>Species reactivity</b>	<b>Reacts with:</b> Human
<b>Immunogen</b>	Recombinant fragment from the C-terminal region of DNA Polymerase delta, catalytic subunit (Human)

Properties

<b>Form</b>	Liquid
<b>Storage instructions</b>	Shipped at 4°C. Store at +4°C short term (1-2 weeks). Upon delivery aliquot. Store at -20°C long term.
<b>Storage buffer</b>	Preservative: 0.05% Sodium Azide Constituents: 1% BSA, PBS, pH 7.4
<b>Purity</b>	Protein G purified
<b>Purification notes</b>	ab54282 was purified using protein G column chromatography from culture supernatant of hybridoma cultured in a medium containing bovine IgG-depleted (approximately 95%) fetal bovine serum. Filtered through a 0.22 µm membrane.
<b>Clonality</b>	Monoclonal
<b>Clone number</b>	2761C6a
<b>Isotype</b>	IgG2a

Applications

Our [Abpromise guarantee](#) covers the use of **ab54282** in the following tested applications.

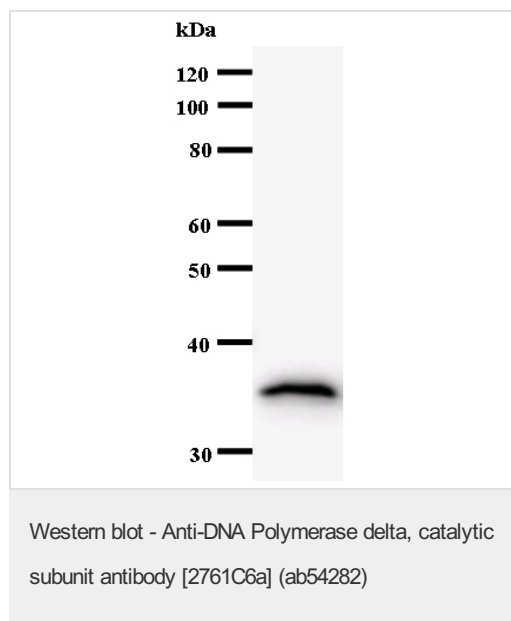
The application notes include recommended starting dilutions; optimal dilutions/concentrations should be determined by the end user.

Application	Abreviews	Notes
Dot blot		Use at an assay dependent dilution.
WB		Use at an assay dependent dilution. Predicted molecular weight: 124 kDa.

## Target

<b>Function</b>	Possesses two enzymatic activities: DNA synthesis (polymerase) and an exonucleolytic activity that degrades single stranded DNA in the 3'- to 5'-direction. Required with its accessory proteins (proliferating cell nuclear antigen (PCNA) and replication factor C (RFC) or activator 1) for leading strand synthesis. Also involved in completing Okazaki fragments initiated by the DNA polymerase alpha/primase complex.
<b>Sequence similarities</b>	Belongs to the DNA polymerase type-B family.
<b>Cellular localization</b>	Nucleus.

## Images



Staining of recombinant immunising protein using anti-DNA Polymerase delta, catalytic subunit [2761C6a] (ab54282).

**Predicted band size:** 124 kDa

**Observed band size:** 36 kDa

[why is the actual band size different from the predicted?](#)

The molecular weight of the band on the western blot does not correspond to the molecular weight of the natural protein because only a fragment of the protein was used.

**Please note:** All products are "FOR RESEARCH USE ONLY AND ARE NOT INTENDED FOR DIAGNOSTIC OR THERAPEUTIC USE"

## Our Abpromise to you: Quality guaranteed and expert technical support

- Replacement or refund for products not performing as stated on the datasheet
- Valid for 12 months from date of delivery
- Response to your inquiry within 24 hours
- We provide support in Chinese, English, French, German, Japanese and Spanish
- Extensive multi-media technical resources to help you
- We investigate all quality concerns to ensure our products perform to the highest standards

If the product does not perform as described on this datasheet, we will offer a refund or replacement. For full details of the Abpromise, please visit <https://www.abcam.com/abpromise> or contact our technical team.

## **Terms and conditions**

---

- Guarantee only valid for products bought direct from Abcam or one of our authorized distributors