


Product datasheet

Anti-XRCC1 antibody [SPM327], prediluted ab54393

★★★★☆ 1 Abreviews 2 References 2 Images

Overview

Product name	Anti-XRCC1 antibody [SPM327], prediluted
Description	Mouse monoclonal [SPM327] to XRCC1, prediluted
Host species	Mouse
Tested applications	Suitable for: IHC-P
Species reactivity	Reacts with: Mouse, Human Predicted to work with: Rat 
Immunogen	Recombinant full length protein XRCC1 (Human)
Positive control	LS174T, HT29, HeLa cells, normal testis.
General notes	Antibody with sodium azide is stable for 24 months when stored at 2-8°C.

Properties

Form	Prediluted
Storage instructions	Shipped at 4°C. Store at +4°C.
Storage buffer	Preservative: 0.1% Sodium Azide Constituents: BSA, 10mM PBS, pH 7.4
Purity	Protein A purified
Purification notes	Purified from ascites fluid by Protein A.
Clonality	Monoclonal
Clone number	SPM327
Isotype	IgG2b
Light chain type	kappa

Applications

Our [Abpromise guarantee](#) covers the use of **ab54393** in the following tested applications.

The application notes include recommended starting dilutions; optimal dilutions/concentrations should be determined by the end user.

Application	Abreviews	Notes
-------------	-----------	-------

IHC-P



Application notes

IHC-P: Ready-to-use for 30 min at RT.
 Staining of formalin-fixed tissues requires boiling tissue sections in 10mM citrate buffer, pH 6.0 for 10 min followed by cooling at RT for 20 min.

Not yet tested in other applications.
 Optimal dilutions/concentrations should be determined by the end user.

Target

Function

Corrects defective DNA strand-break repair and sister chromatid exchange following treatment with ionizing radiation and alkylating agents.

Sequence similarities

Contains 2 BRCT domains.

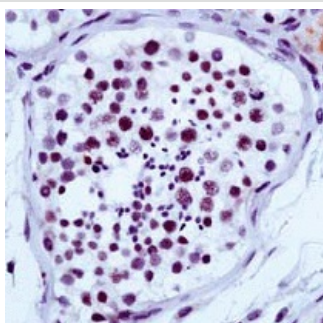
Post-translational modifications

Phosphorylation of Ser-371 causes dimer dissociation. Phosphorylation by CK2 promotes interaction with APTX and APLF.
 Sumoylated.

Cellular localization

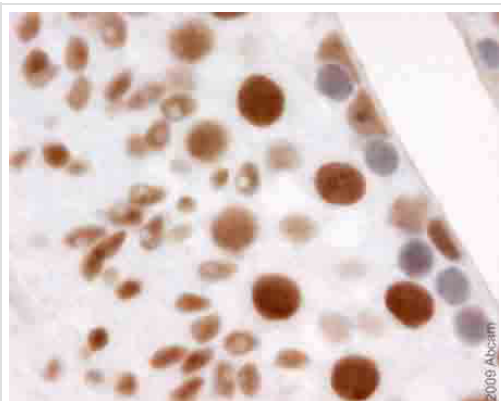
Nucleus. Accumulates at sites of DNA damage.

Images



ab54393 (prediluted) staining XRCC1 in human testis by Immunohistochemistry, Formalin-fixed, Paraffin embedded tissue.

Immunohistochemistry (Formalin/PFA-fixed paraffin-embedded sections) - Anti-XRCC1 antibody [SPM327], prediluted (ab54393)



ab54393 (prediluted) staining XRCC1 in mouse tissue (testis) by Immunohistochemistry.

Immunohistochemistry (Formalin/PFA-fixed paraffin-embedded sections) - Anti-XRCC1 antibody [SPM327], prediluted (ab54393)
This image is courtesy of Emad Ahmed

Please note: All products are "FOR RESEARCH USE ONLY AND ARE NOT INTENDED FOR DIAGNOSTIC OR THERAPEUTIC USE"

Our Abpromise to you: Quality guaranteed and expert technical support

- Replacement or refund for products not performing as stated on the datasheet
- Valid for 12 months from date of delivery
- Response to your inquiry within 24 hours
- We provide support in Chinese, English, French, German, Japanese and Spanish
- Extensive multi-media technical resources to help you
- We investigate all quality concerns to ensure our products perform to the highest standards

If the product does not perform as described on this datasheet, we will offer a refund or replacement. For full details of the Abpromise, please visit <https://www.abcam.com/abpromise> or contact our technical team.

Terms and conditions

- Guarantee only valid for products bought direct from Abcam or one of our authorized distributors