

Product datasheet

Anti-PI 3 Kinase regulatory subunit 4 antibody ab5459

1 Abreviews 2 Images

Overview

<b>Product name</b>	Anti-PI 3 Kinase regulatory subunit 4 antibody
<b>Description</b>	Rabbit polyclonal to PI 3 Kinase regulatory subunit 4
<b>Host species</b>	Rabbit
<b>Tested applications</b>	<b>Suitable for:</b> IHC-P, ELISA, WB
<b>Species reactivity</b>	<b>Reacts with:</b> Human
<b>Immunogen</b>	Synthetic peptide conjugated to KLH, corresponding to amino acids 68-84 of Human PI3KR 4.
<b>Positive control</b>	T-47D cell lysate.
<b>General notes</b>	

Protein kinases are enzymes that transfer a phosphate group from a phosphate donor, generally the  $\gamma$  phosphate of ATP, onto an acceptor amino acid in a substrate protein. By this basic mechanism, protein kinases mediate most of the signal transduction in eukaryotic cells, regulating cellular metabolism, transcription, cell cycle progression, cytoskeletal rearrangement and cell movement, apoptosis, and differentiation. With more than 500 gene products, the protein kinase family is one of the largest families of proteins in eukaryotes. The family has been classified in 8 major groups based on sequence comparison of their tyrosine (PTK) or serine/threonine (STK) kinase catalytic domains.

Properties

<b>Form</b>	Liquid
<b>Storage instructions</b>	Shipped at 4°C. Upon delivery aliquot and store at -20°C or -80°C. Avoid repeated freeze / thaw cycles.
<b>Storage buffer</b>	Preservative: 0.09% Sodium Azide Constituents: PBS
<b>Purity</b>	Protein G purified
<b>Purification notes</b>	This antibody is purified through a protein G column and eluted out with both high and low pH buffers and neutralized immediately after elution then followed by dialysis against PBS.
<b>Primary antibody notes</b>	Protein kinases are enzymes that transfer a phosphate group from a phosphate donor, generally the $\gamma$ phosphate of ATP, onto an acceptor amino acid in a substrate protein. By this basic mechanism, protein kinases mediate most of the signal transduction in eukaryotic cells, regulating cellular metabolism, transcription, cell cycle progression, cytoskeletal rearrangement and cell movement, apoptosis, and differentiation. With more than 500 gene products, the

protein kinase family is one of the largest families of proteins in eukaryotes. The family has been classified in 8 major groups based on sequence comparison of their tyrosine (PTK) or serine/threonine (STK) kinase catalytic domains.

**Clonality** Polyclonal

**Isotype** IgG

## Applications

---

Our [Abpromise guarantee](#) covers the use of **ab5459** in the following tested applications.

The application notes include recommended starting dilutions; optimal dilutions/concentrations should be determined by the end user.

Application	Abreviews	Notes
IHC-P		1/50 - 1/100.
ELISA		1/1000.
WB		1/100 - 1/500. Detects a band of approximately 150 kDa (predicted molecular weight: 162 kDa).

## Target

---

**Function** Regulatory subunit of the PI3K complex. May regulate membrane trafficking late in the endocytic pathway.

**Tissue specificity** Ubiquitously expressed.

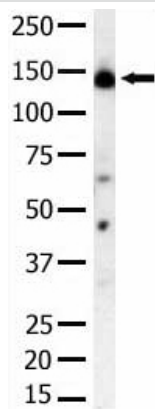
**Sequence similarities** Belongs to the protein kinase superfamily. Ser/Thr protein kinase family.  
Contains 3 HEAT repeats.  
Contains 1 protein kinase domain.  
Contains 7 WD repeats.

**Post-translational modifications** Myristoylated.  
Probably autophosphorylated.

---

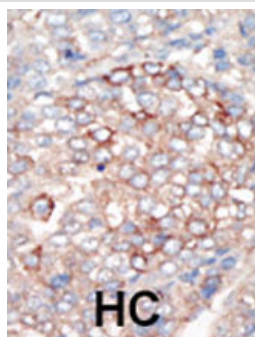
## Images

---



Western blot - Anti-PI 3 Kinase regulatory subunit 4 antibody (ab5459)

ab5459 at a 1/100 dilution staining approximately 150kDa band of PI3KR4 in T-47D cell lysate by Western blot (ECL). ab5459 at a 1/100 dilution staining approximately 150kDa band of PI3KR4 in T-47D cell lysate by Western blot (ECL).



Immunohistochemistry (Formalin/PFA-fixed paraffin-embedded sections) - Anti-PI 3 Kinase regulatory subunit 4 antibody (ab5459)

ab5459 staining PI 3 Kinase regulatory subunit 4 in human hepatocarcinoma (HC) tissue by Immunohistochemistry (Formalin/PFA-fixed paraffin-embedded sections).

**Please note:** All products are "FOR RESEARCH USE ONLY AND ARE NOT INTENDED FOR DIAGNOSTIC OR THERAPEUTIC USE"

### Our Abpromise to you: Quality guaranteed and expert technical support

- Replacement or refund for products not performing as stated on the datasheet
- Valid for 12 months from date of delivery
- Response to your inquiry within 24 hours
- We provide support in Chinese, English, French, German, Japanese and Spanish
- Extensive multi-media technical resources to help you
- We investigate all quality concerns to ensure our products perform to the highest standards

If the product does not perform as described on this datasheet, we will offer a refund or replacement. For full details of the Abpromise, please visit <https://www.abcam.com/abpromise> or contact our technical team.

### Terms and conditions

- Guarantee only valid for products bought direct from Abcam or one of our authorized distributors