

Product datasheet

Anti-DAZ1 antibody ab54605

1 References 2 Images

Overview

<b>Product name</b>	Anti-DAZ1 antibody
<b>Description</b>	Mouse monoclonal to DAZ1
<b>Host species</b>	Mouse
<b>Tested applications</b>	<b>Suitable for:</b> WB, IHC-P
<b>Species reactivity</b>	<b>Reacts with:</b> Human
<b>Immunogen</b>	Recombinant fragment: SSSAAASQGW VLPEGKMPN TVFVGGIDAR MDETEIGSCF GRYGSVKEVK IITNRTGVSK GYGFVSFVND VDVQKIVGSQ IHFHGKKLKL GPAIRKQKLC , corresponding to amino acids 21-121 of Human DAZ1 <a href="#">Run BLAST with ExPASy</a> <a href="#">Run BLAST with NCBI</a>

Properties

<b>Form</b>	Liquid
<b>Storage instructions</b>	Shipped at 4°C. Upon delivery aliquot and store at -20°C or -80°C. Avoid repeated freeze / thaw cycles.
<b>Storage buffer</b>	Preservative: None PBS, pH 7.2
<b>Purity</b>	Protein G purified
<b>Clonality</b>	Monoclonal
<b>Isotype</b>	IgG1
<b>Light chain type</b>	kappa

Applications

Our [Abpromise guarantee](#) covers the use of **ab54605** in the following tested applications.

The application notes include recommended starting dilutions; optimal dilutions/concentrations should be determined by the end user.

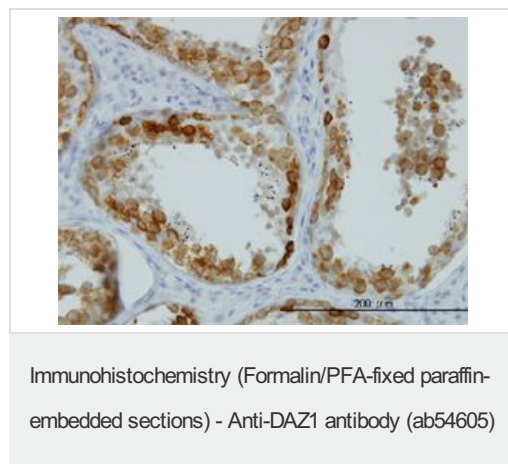
Application	Abreviews	Notes
WB		Use a concentration of 1 - 5 µg/ml. Predicted molecular weight: 83 kDa.

Application	Abreviews	Notes
IHC-P		Use a concentration of 1 µg/ml.

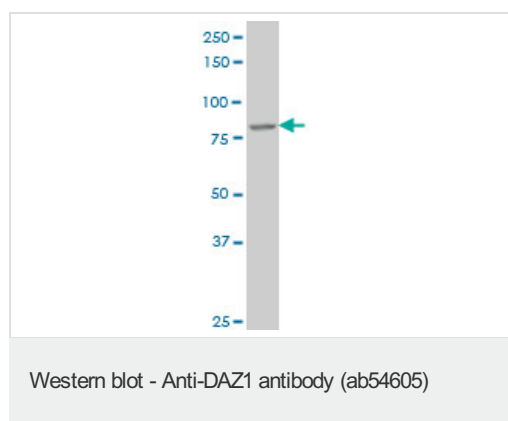
## Target

<b>Relevance</b>	DAZ1 (deleted in azoospermia 1) is an RNA-binding protein that is essential in spermatogenesis. It may regulate translation of mRNAs by binding to the 3'-UTR.
<b>Cellular localization</b>	Cytoplasmic and Nuclear. Note: Predominantly cytoplasmic. Nuclear at some stages of spermatozoide development. Localizes both to the nuclei and cytoplasm of spermatozoide differentiation. Nuclear in fetal gonocytes and in spermatogonial nuclei. It then relocates to the cytoplasm during male meiosis.

## Images



DAZ1 antibody (ab54605) used in immunohistochemistry at 1 µg/ml on formalin fixed and paraffin embedded human testis.



DAZ1 antibody (ab54605) at 1 µg/lane + human Pancreas cell lysate at 25 µg/lane.

**Please note:** All products are "FOR RESEARCH USE ONLY AND ARE NOT INTENDED FOR DIAGNOSTIC OR THERAPEUTIC USE"

## Our Abpromise to you: Quality guaranteed and expert technical support

- Replacement or refund for products not performing as stated on the datasheet
- Valid for 12 months from date of delivery

- Response to your inquiry within 24 hours
- We provide support in Chinese, English, French, German, Japanese and Spanish
- Extensive multi-media technical resources to help you
- We investigate all quality concerns to ensure our products perform to the highest standards

If the product does not perform as described on this datasheet, we will offer a refund or replacement. For full details of the Abpromise, please visit <https://www.abcam.com/abpromise> or contact our technical team.

### **Terms and conditions**

---

- Guarantee only valid for products bought direct from Abcam or one of our authorized distributors