


Product datasheet

Anti-CIDE A antibody ab54630

1 Image

Overview

<b>Product name</b>	Anti-CIDE A antibody
<b>Description</b>	Mouse monoclonal to CIDE A
<b>Host species</b>	Mouse
<b>Tested applications</b>	<b>Suitable for:</b> WB
<b>Species reactivity</b>	<b>Reacts with:</b> Recombinant fragment <b>Predicted to work with:</b> Human 
<b>Immunogen</b>	Recombinant full length protein, corresponding to amino acids 1-254 of Human CIDE A

Properties

<b>Form</b>	Liquid
<b>Storage instructions</b>	Shipped at 4°C. Upon delivery aliquot and store at -20°C or -80°C. Avoid repeated freeze / thaw cycles.
<b>Storage buffer</b>	Preservative: None PBS, pH 7.2
<b>Purity</b>	Protein G purified
<b>Clonality</b>	Monoclonal
<b>Isotype</b>	IgG2a
<b>Light chain type</b>	kappa

Applications

Our [Abpromise guarantee](#) covers the use of **ab54630** in the following tested applications.

The application notes include recommended starting dilutions; optimal dilutions/concentrations should be determined by the end user.

Application	Abreviews	Notes
WB		Use a concentration of 1 - 5 µg/ml. This antibody has only been tested in WB against the recombinant fragment used as immunogen. We have no data on the detection of endogenous protein.

## Target

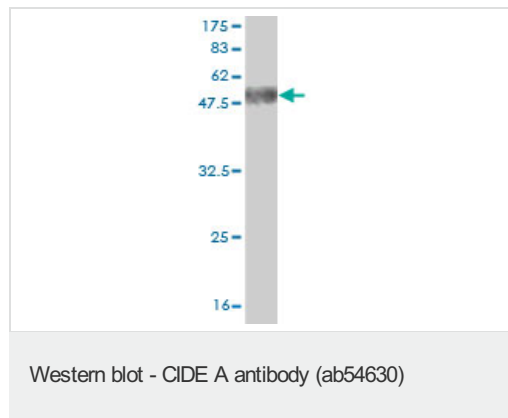
### Relevance

Apoptosis is related to many diseases and induced by a family of cell death receptors and their ligands. Cell death signals are transduced by death domain containing adapter molecules and members of the caspase family of proteases. These death signals finally cause the degradation of chromosomal DNA by activated DNase. DFF45/ICARD has been identified as inhibitor of caspase activated DNase DFF40/CAD. DFF45 related proteins CIDE A and CIDE B (for cell death inducing DFF like effector A and B) were recently identified. CIDE contains a new type of domain termed CIDE N, which has high homology with the regulatory domains of DFF45/ICAD and DFF40/CAD. Expression of CIDE A induces DNA fragmentation and activates apoptosis, which is inhibited by DFF45. CIDE A is a DFF45 inhibitable effector that promotes cell death and DNA fragmentation. CIDE A is expressed in many tissues.

### Cellular localization

Nuclear. Cytoplasm; mitochondrial envelope; lipid droplet.

## Images



Western blot against tagged recombinant protein immunogen using ab54630 CIDE A antibody at 1ug/ml. Predicted band size of immunogen is 54 kDa.

This antibody has only been tested in WB against the recombinant fragment used as immunogen. We have no data on the detection of endogenous protein.

**Please note:** All products are "FOR RESEARCH USE ONLY AND ARE NOT INTENDED FOR DIAGNOSTIC OR THERAPEUTIC USE"

## Our Abpromise to you: Quality guaranteed and expert technical support

- Replacement or refund for products not performing as stated on the datasheet
- Valid for 12 months from date of delivery
- Response to your inquiry within 24 hours
- We provide support in Chinese, English, French, German, Japanese and Spanish
- Extensive multi-media technical resources to help you
- We investigate all quality concerns to ensure our products perform to the highest standards

If the product does not perform as described on this datasheet, we will offer a refund or replacement. For full details of the Abpromise, please visit <https://www.abcam.com/abpromise> or contact our technical team.

## Terms and conditions

- Guarantee only valid for products bought direct from Abcam or one of our authorized distributors