

Product datasheet

Anti-BCS1L antibody ab54846

1 Image

Overview

Product name	Anti-BCS1L antibody
Description	Mouse monoclonal to BCS1L
Host species	Mouse
Tested applications	Suitable for: WB
Species reactivity	Reacts with: Recombinant fragment Predicted to work with: Human

Immunogen

Recombinant fragment: ASTEARIVFM TTNHVDRLDP ALIRPGRVDL KEYVGYCSHW QLTQMFQRFY PGQAPSLAEN FAEHVL RATN QISPAQVQGY FMLYKNDPVG AIHNAESLR, corresponding to amino acids 320-419 of Human BCS1L

[Run BLAST with ExPASy](#) [Run BLAST with NCBI](#)

Properties

Form	Liquid
Storage instructions	Shipped at 4°C. Upon delivery aliquot and store at -20°C or -80°C. Avoid repeated freeze / thaw cycles.
Storage buffer	Preservative: None PBS, pH 7.2
Purity	Protein G purified
Clonality	Monoclonal
Isotype	IgG1
Light chain type	kappa

Applications

Our [Abpromise guarantee](#) covers the use of **ab54846** in the following tested applications.

The application notes include recommended starting dilutions; optimal dilutions/concentrations should be determined by the end user.

Application	Abreviews	Notes
-------------	-----------	-------

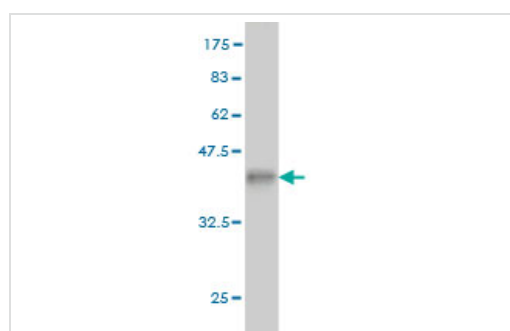
Application	Abreviews	Notes
WB		Use a concentration of 1 - 5 µg/ml. This antibody has only been tested in WB against the recombinant fragment used as immunogen. We have no data on the detection of endogenous protein.

Target

Relevance BCS1L (BCS1-like) is a chaperone necessary for the assembly of mitochondrial respiratory chain complex III. The protein does not contain a mitochondrial targeting sequence but experimental studies confirm that it is imported into mitochondria. Mutations in this gene are associated with mitochondrial complex III deficiency and the GRACILE syndrome. Two alternatively spliced transcripts encoding the same protein have been described.

Cellular localization Mitochondrial. Mitochondrion inner membrane. Single-pass membrane protein.

Images



Western blot - Anti-BCS1L antibody (ab54846)

Western blot against tagged recombinant protein immunogen using ab54846 BCS1L antibody at 1µg/ml. Predicted band size of immunogen is 37 kDa.

This antibody has only been tested in WB against the recombinant fragment used as immunogen. We have no data on the detection of endogenous protein.

Please note: All products are "FOR RESEARCH USE ONLY AND ARE NOT INTENDED FOR DIAGNOSTIC OR THERAPEUTIC USE"

Our Abpromise to you: Quality guaranteed and expert technical support

- Replacement or refund for products not performing as stated on the datasheet
- Valid for 12 months from date of delivery
- Response to your inquiry within 24 hours
- We provide support in Chinese, English, French, German, Japanese and Spanish
- Extensive multi-media technical resources to help you
- We investigate all quality concerns to ensure our products perform to the highest standards

If the product does not perform as described on this datasheet, we will offer a refund or replacement. For full details of the Abpromise, please visit <https://www.abcam.com/abpromise> or contact our technical team.

Terms and conditions

- Guarantee only valid for products bought direct from Abcam or one of our authorized distributors