

Product datasheet

Anti-Kif2 α antibody ab55383

★ ★ ★ ☆ ☆
[2 Abreviews](#)
[1 References](#)
[2 Images](#)

Overview

Product name	Anti-Kif2a antibody
Description	Mouse monoclonal to Kif2a
Host species	Mouse
Tested applications	Suitable for: IHC-P, WB
Species reactivity	Reacts with: Human, Recombinant fragment
Immunogen	Recombinant full length protein, corresponding to amino acids 1-680 of Human Kif2a

Properties

Form	Liquid
Storage instructions	Shipped at 4°C. Upon delivery aliquot and store at -20°C or -80°C. Avoid repeated freeze / thaw cycles.
Storage buffer	Preservative: None PBS, pH 7.2
Purity	Protein G purified
Clonality	Monoclonal
Isotype	IgG1
Light chain type	kappa

Applications

Our [Abpromise guarantee](#) covers the use of **ab55383** in the following tested applications.

The application notes include recommended starting dilutions; optimal dilutions/concentrations should be determined by the end user.

Application	Abreviews	Notes
IHC-P		
WB	★ ★ ★ ☆ ☆	

Application notes	WB: Use at a concentration of 1-5 μ g/ml. IHC-P: Use at a concentration of 6 μ g/ml.
--------------------------	---

This antibody has only been tested in WB against the recombinant fragment used as immunogen. We have no data on the detection of endogenous protein.

Not yet tested in other applications.

Optimal dilutions/concentrations should be determined by the end user.

Target

Function

Plus end-directed microtubule-dependent motor required for normal brain development. May regulate microtubule dynamics during axonal growth. Required for normal progression through mitosis. Required for normal congress of chromosomes at the metaphase plate. Required for normal spindle dynamics during mitosis. Promotes spindle turnover. Implicated in formation of bipolar mitotic spindles. Has microtubule depolymerization activity.

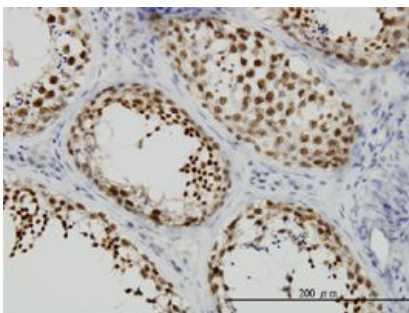
Sequence similarities

Belongs to the kinesin-like protein family. MCAK/KIF2 subfamily.
Contains 1 kinesin-motor domain.

Cellular localization

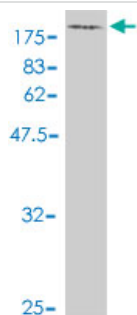
Cytoplasm. Cytoplasm > cytoskeleton > centrosome. Cytoplasm > cytoskeleton > spindle pole. Cytoplasm > cytoskeleton > spindle. Localized to the spindle microtubules and spindle poles from prophase to metaphase. Efficient targeting to spindle microtubules and spindle poles requires the kinase activity of PLK1. Recruited to mitotic spindles by interaction with PSRC1.

Images



Immunohistochemistry (Formalin/PFA-fixed paraffin-embedded sections) - Anti-Kif2a antibody (ab55383)

Kif2a antibody (ab55383) used in immunohistochemistry at 6ug/ml on formalin fixed and paraffin embedded human testis.



Western blot - Anti-Kif2a antibody (ab55383)

Western blot against tagged recombinant protein immunogen using ab55383 Kif2a antibody at 1ug/ml. Predicted band size of immunogen is 101 kDa

Our Abpromise to you: Quality guaranteed and expert technical support

- Replacement or refund for products not performing as stated on the datasheet
- Valid for 12 months from date of delivery
- Response to your inquiry within 24 hours

- We provide support in Chinese, English, French, German, Japanese and Spanish
- Extensive multi-media technical resources to help you
- We investigate all quality concerns to ensure our products perform to the highest standards

If the product does not perform as described on this datasheet, we will offer a refund or replacement. For full details of the Abpromise, please visit <https://www.abcam.com/abpromise> or contact our technical team.

Terms and conditions

- Guarantee only valid for products bought direct from Abcam or one of our authorized distributors