

Product datasheet

Anti-Laminin 2 alpha antibody ab55409

★★★★☆ 2 Abreviews 3 Images

Overview

Product name	Anti-Laminin 2 alpha antibody
Description	Mouse monoclonal to Laminin 2 alpha
Host species	Mouse
Tested applications	Suitable for: IHC-P, WB
Species reactivity	Reacts with: Human, Recombinant fragment
Immunogen	Recombinant fragment, corresponding to amino acids 3013-3123 of Human Laminin 2 alpha

Properties

Form	Liquid
Storage instructions	Shipped at 4°C. Upon delivery aliquot and store at -20°C or -80°C. Avoid repeated freeze / thaw cycles.
Storage buffer	Preservative: None PBS, pH 7.2
Purity	Protein G purified
Clonality	Monoclonal
Isotype	IgG1
Light chain type	kappa

Applications

Our [Abpromise guarantee](#) covers the use of **ab55409** in the following tested applications.

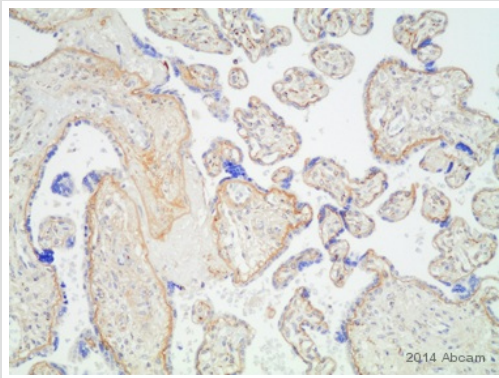
The application notes include recommended starting dilutions; optimal dilutions/concentrations should be determined by the end user.

Application	Abreviews	Notes
IHC-P	★★★★★	Use a concentration of 1 µg/ml.
WB	★★★☆☆	Use a concentration of 1 - 5 µg/ml. This antibody has only been tested in WB against the recombinant fragment used as immunogen. We have no data on the detection of endogenous protein.

Target

Function	Binding to cells via a high affinity receptor, laminin is thought to mediate the attachment, migration and organization of cells into tissues during embryonic development by interacting with other extracellular matrix components.
Tissue specificity	Placenta, striated muscle, peripheral nerve, cardiac muscle, pancreas, lung, spleen, kidney, adrenal gland, skin, testis, meninges, choroid plexus, and some other regions of the brain; not in liver, thymus and bone.
Involvement in disease	Defects in LAMA2 are the cause of merosin-deficient congenital muscular dystrophy type 1A (MDC1A) [MIM:607855]. MDC1A is characterized by difficulty walking, hypotonia, proximal weakness, hyporeflexia, and white matter hypodensity on MRI.
Sequence similarities	Contains 17 laminin EGF-like domains. Contains 5 laminin G-like domains. Contains 2 laminin IV type A domains. Contains 1 laminin N-terminal domain.
Domain	The alpha-helical domains I and II are thought to interact with other laminin chains to form a coiled coil structure. Domains VI, IV and G are globular.
Cellular localization	Secreted > extracellular space > extracellular matrix > basement membrane. Major component.

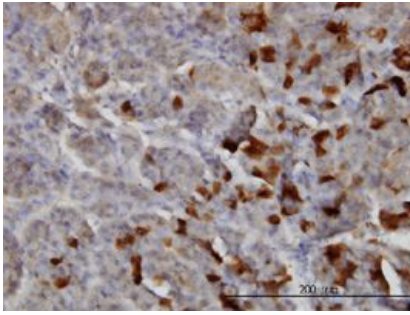
Images



ab55409 staining Laminin 2 alpha in human placenta tissue sections by Immunohistochemistry (IHC-P - paraformaldehyde-fixed, paraffin-embedded sections). Tissue was fixed with formaldehyde and blocked with H₂O₂ for 10 minutes at 25°C; antigen retrieval was by heat mediation in citrate pH 6 at 100°C for 20 minutes. Samples were incubated with primary antibody (1/500) for 20 minutes at 25°C. An undiluted HRP polymer-conjugated goat anti-mouse IgG polyclonal was used as the secondary antibody.

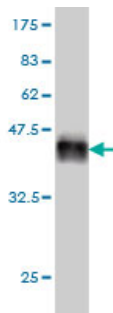
Immunohistochemistry (Formalin/PFA-fixed paraffin-embedded sections) - Anti-Laminin 2 alpha antibody (ab55409)

This image is courtesy of an anonymous Abreview



Immunohistochemistry (Formalin/PFA-fixed paraffin-embedded sections) - Anti-Laminin 2 alpha antibody (ab55409)

Laminin 2 alpha antibody (ab55409) used in immunohistochemistry at 1ug/ml on formalin fixed and paraffin embedded human pancreas.



Western blot - Anti-Laminin 2 alpha antibody (ab55409)

Western blot against tagged recombinant protein immunogen using ab55409 Laminin 2 alpha antibody at 1ug/ml. Predicted band size of immunogen is 38 kDa

Please note: All products are "FOR RESEARCH USE ONLY AND ARE NOT INTENDED FOR DIAGNOSTIC OR THERAPEUTIC USE"

Our Abpromise to you: Quality guaranteed and expert technical support

- Replacement or refund for products not performing as stated on the datasheet
- Valid for 12 months from date of delivery
- Response to your inquiry within 24 hours
- We provide support in Chinese, English, French, German, Japanese and Spanish
- Extensive multi-media technical resources to help you
- We investigate all quality concerns to ensure our products perform to the highest standards

If the product does not perform as described on this datasheet, we will offer a refund or replacement. For full details of the Abpromise, please visit <https://www.abcam.com/abpromise> or contact our technical team.

Terms and conditions

- Guarantee only valid for products bought direct from Abcam or one of our authorized distributors