

Product datasheet

Anti-PBX2 antibody ab55498

[1 References](#) [2 Images](#)

Overview

Product name	Anti-PBX2 antibody
Description	Mouse monoclonal to PBX2
Host species	Mouse
Tested applications	Suitable for: WB, ICC/IF
Species reactivity	Reacts with: Human
Immunogen	Recombinant fragment: DMFLGMPGLN GDSYSASQVE SLRHSMGPGG YGDNLGGGQM YSPREMRANG SWQEAVTPSS VTSPTEGPGS VHSDTSN, corresponding to amino acids 354-431 of Human PBX2 Run BLAST with ExPASy Run BLAST with NCBI

Properties

Form	Liquid
Storage instructions	Shipped at 4°C. Upon delivery aliquot and store at -20°C or -80°C. Avoid repeated freeze / thaw cycles.
Storage buffer	Preservative: None PBS, pH 7.2
Purity	Protein G purified
Clonality	Monoclonal
Isotype	IgG2a
Light chain type	kappa

Applications

Our [Abpromise guarantee](#) covers the use of **ab55498** in the following tested applications.

The application notes include recommended starting dilutions; optimal dilutions/concentrations should be determined by the end user.

Application	Abreviews	Notes
WB		Use a concentration of 1 - 5 µg/ml. Predicted molecular weight: 46 kDa.

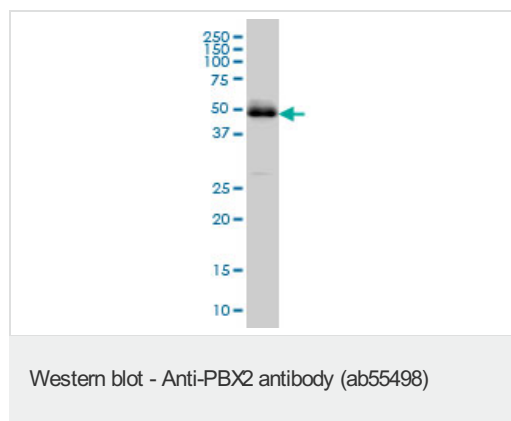
Application	Abreviews	Notes
ICC/IF		Use a concentration of 10 µg/ml.

Target

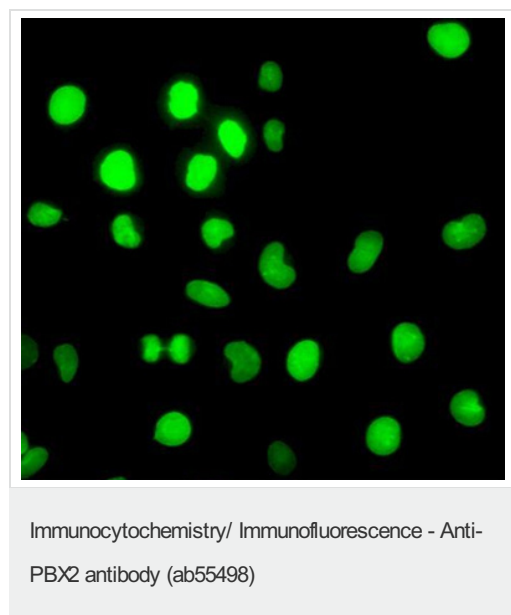
Relevance PBX2 is a ubiquitously expressed member of the TALE/PBX homeobox family and was identified by its similarity to a homeobox gene involved in t(1;19) translocation in acute pre-B-cell leukemias. PBX2 is a transcriptional activator which binds to the TLX1 promoter, binding to the sequence 5'-ATCAATCAA-3'. It forms heterodimers with MEIS1, involved in activation of PF4 transcription, and heterotrimers with MEIS1 and HOXA9. The gene is located within the major histocompatibility complex (MHC) on chromosome 6.

Cellular localization Nuclear

Images



PBX2 antibody (ab55498) at 1ug/lane + HeLa cell lysate at 25ug/lane.



ab55498 at 10 ug/ml staining PBX2 in human Hella cells by Immunocytochemistry/ Immunofluorescence.

Please note: All products are "FOR RESEARCH USE ONLY AND ARE NOT INTENDED FOR DIAGNOSTIC OR THERAPEUTIC USE"

Our Abpromise to you: Quality guaranteed and expert technical support

- Replacement or refund for products not performing as stated on the datasheet
- Valid for 12 months from date of delivery
- Response to your inquiry within 24 hours

- We provide support in Chinese, English, French, German, Japanese and Spanish
- Extensive multi-media technical resources to help you
- We investigate all quality concerns to ensure our products perform to the highest standards

If the product does not perform as described on this datasheet, we will offer a refund or replacement. For full details of the Abpromise, please visit <https://www.abcam.com/abpromise> or contact our technical team.

Terms and conditions

- Guarantee only valid for products bought direct from Abcam or one of our authorized distributors