

## Product datasheet

# Anti-C21orf33 antibody ab56459

[2 Images](#)

### Overview

<b>Product name</b>	Anti-C21orf33 antibody
<b>Description</b>	Mouse monoclonal to C21orf33
<b>Host species</b>	Mouse
<b>Tested applications</b>	<b>Suitable for:</b> WB, IHC-P
<b>Species reactivity</b>	<b>Reacts with:</b> Human
<b>Immunogen</b>	Recombinant fragment: RGVEVTVGHE QEEGGKWPYA GTAEAIALG AKHCVKEVVE AHVDQKNKVV TTPAFMCETA LHYHDGIGA MVRKVLELTG K, corresponding to amino acids 188-269 of Human C21orf33 <a href="#">Run BLAST with ExPASy</a> <a href="#">Run BLAST with NCBI</a>

### Properties

<b>Form</b>	Liquid
<b>Storage instructions</b>	Shipped at 4°C. Upon delivery aliquot and store at -20°C or -80°C. Avoid repeated freeze / thaw cycles.
<b>Storage buffer</b>	Preservative: None PBS, pH 7.2
<b>Purity</b>	Protein G purified
<b>Clonality</b>	Monoclonal
<b>Isotype</b>	IgG1
<b>Light chain type</b>	kappa

### Applications

Our [Abpromise guarantee](#) covers the use of **ab56459** in the following tested applications.

The application notes include recommended starting dilutions; optimal dilutions/concentrations should be determined by the end user.

Application	Abreviews	Notes
WB		Use a concentration of 1 - 5 µg/ml. Predicted molecular weight: 28 kDa.

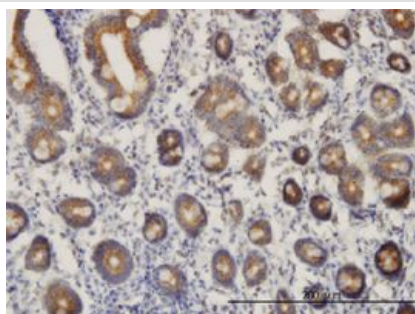
Application	Abreviews	Notes
IHC-P		Use a concentration of 3 µg/ml.

## Target

**Relevance** C21orf33 encodes a 268 amino acid protein which shares significant homology with Escherichia coli anti-sigma cross-reacting protein (SCRP-27A/SCRP27) and zebrafish Es1 protein. The specific function of the C21orf33 protein is not known.

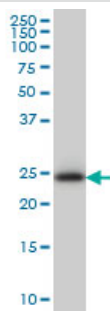
**Cellular localization** Mitochondrial

## Images



C21orf33 antibody (ab56459) used in immunohistochemistry at 3ug/ml on formalin fixed and paraffin embedded human small Intestine.

Immunohistochemistry (Formalin/PFA-fixed paraffin-embedded sections) - Anti-C21orf33 antibody (ab56459)



C21orf33 antibody (ab56459) at 1ug/lane + HeLa cell lysate at 25ug/lane.

Western blot - Anti-C21orf33 antibody (ab56459)

**Please note:** All products are "FOR RESEARCH USE ONLY AND ARE NOT INTENDED FOR DIAGNOSTIC OR THERAPEUTIC USE"

## Our Abpromise to you: Quality guaranteed and expert technical support

- Replacement or refund for products not performing as stated on the datasheet
- Valid for 12 months from date of delivery

- Response to your inquiry within 24 hours
- We provide support in Chinese, English, French, German, Japanese and Spanish
- Extensive multi-media technical resources to help you
- We investigate all quality concerns to ensure our products perform to the highest standards

If the product does not perform as described on this datasheet, we will offer a refund or replacement. For full details of the Abpromise, please visit <https://www.abcam.com/abpromise> or contact our technical team.

### **Terms and conditions**

---

- Guarantee only valid for products bought direct from Abcam or one of our authorized distributors