

Product datasheet

Anti-ARHGEF1 antibody ab56462

1 Image

Overview

Product name	Anti-ARHGEF1 antibody
Description	Mouse monoclonal to ARHGEF1
Host species	Mouse
Tested applications	Suitable for: WB
Species reactivity	Reacts with: Human
Immunogen	Recombinant fragment: CRPGPEGQLA ATALRKVLSL KQLLFP AEED NGAGPPRDGD GVPGGGPLSP ARTQEIQENL LSLEETMKQL EELEEEFCRL RPLLSQLGGN SVPQPGCT, corresponding to amino acids 830-927 of Human ARHGEF1 Run BLAST with ExPASy Run BLAST with NCBI

Properties

Form	Liquid
Storage instructions	Shipped at 4°C. Upon delivery aliquot and store at -20°C or -80°C. Avoid repeated freeze / thaw cycles.
Storage buffer	Preservative: None PBS, pH 7.2
Purity	Protein G purified
Clonality	Monoclonal
Isotype	IgG2a
Light chain type	kappa

Applications

Our [Abpromise guarantee](#) covers the use of **ab56462** in the following tested applications.

The application notes include recommended starting dilutions; optimal dilutions/concentrations should be determined by the end user.

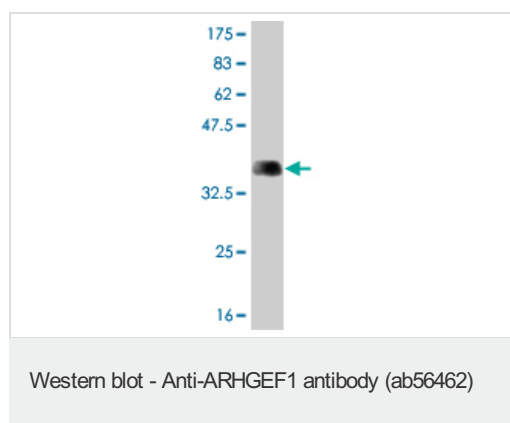
Application	Abreviews	Notes
-------------	-----------	-------

Application	Abreviews	Notes
WB		Use a concentration of 1 - 5 µg/ml. This antibody has only been tested in WB against the recombinant fragment used as immunogen. We have no data on the detection of endogenous protein.

Target

Function	Seems to play a role in the regulation of RhoA GTPase by guanine nucleotide-binding alpha-12 (GNA12) and alpha-13 (GNA13) subunits. Acts as GTPase-activating protein (GAP) for GNA12 and GNA13, and as guanine nucleotide exchange factor (GEF) for RhoA GTPase. Activated G alpha 13/GNA13 stimulates the RhoGEF activity through interaction with the RGS-like domain. This GEF activity is inhibited by binding to activated GNA12. Mediates angiotensin-2-induced RhoA activation.
Tissue specificity	Ubiquitously expressed.
Sequence similarities	Contains 1 DH (DBL-homology) domain. Contains 1 PH domain. Contains 1 RGSL (RGS-like) domain.
Domain	The RGSL domain, also known as rgRGS domain, is necessary but not sufficient for GAP activity. The DH domain is involved in interaction with CCPG1.
Post-translational modifications	Phosphorylated by PKCA. Angiotensin-2 induced Tyr-738 phosphorylation is mediated by JAK2.
Cellular localization	Cytoplasm. Membrane. Translocated to the membrane by activated GNA13 or LPA stimulation.

Images



Western blot against tagged recombinant protein immunogen using ab56462 ARHGEF1 antibody at 1ug/ml. Predicted band size of immunogen is 37 kDa

Please note: All products are "FOR RESEARCH USE ONLY AND ARE NOT INTENDED FOR DIAGNOSTIC OR THERAPEUTIC USE"

Our Abpromise to you: Quality guaranteed and expert technical support

- Replacement or refund for products not performing as stated on the datasheet
- Valid for 12 months from date of delivery

- Response to your inquiry within 24 hours
- We provide support in Chinese, English, French, German, Japanese and Spanish
- Extensive multi-media technical resources to help you
- We investigate all quality concerns to ensure our products perform to the highest standards

If the product does not perform as described on this datasheet, we will offer a refund or replacement. For full details of the Abpromise, please visit <https://www.abcam.com/abpromise> or contact our technical team.

Terms and conditions

- Guarantee only valid for products bought direct from Abcam or one of our authorized distributors