

Product datasheet

Anti-LRRFIP1 antibody ab56486

2 Images

Overview

<b>Product name</b>	Anti-LRRFIP1 antibody
<b>Description</b>	Mouse monoclonal to LRRFIP1
<b>Host species</b>	Mouse
<b>Tested applications</b>	<b>Suitable for:</b> WB, IHC-P
<b>Species reactivity</b>	<b>Reacts with:</b> Human
<b>Immunogen</b>	Recombinant fragment, corresponding to amino acids 675-785 of Human LRRFIP1

Properties

<b>Form</b>	Liquid
<b>Storage instructions</b>	Shipped at 4°C. Upon delivery aliquot and store at -20°C or -80°C. Avoid repeated freeze / thaw cycles.
<b>Storage buffer</b>	Preservative: None PBS, pH 7.2
<b>Purity</b>	Protein G purified
<b>Clonality</b>	Monoclonal
<b>Isotype</b>	IgG2a
<b>Light chain type</b>	kappa

Applications

Our [Abpromise guarantee](#) covers the use of **ab56486** in the following tested applications.

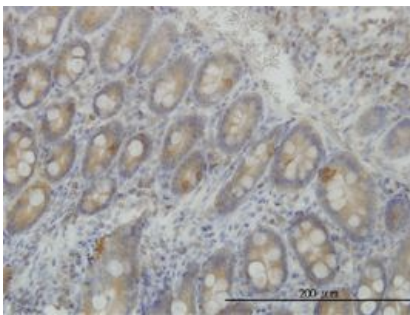
The application notes include recommended starting dilutions; optimal dilutions/concentrations should be determined by the end user.

Application	Abreviews	Notes
WB		Use a concentration of 1 - 5 µg/ml. Predicted molecular weight: 86 kDa.
IHC-P		Use a concentration of 1 µg/ml.

## Target

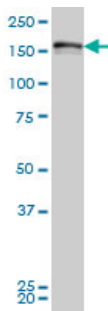
<b>Function</b>	Transcriptional repressor which preferentially binds to the GC-rich consensus sequence (5'-AGCCCCCGGCG-3') and may regulate expression of TNF, EGFR and PDGFA. May control smooth muscle cells proliferation following artery injury through PDGFA repression. May also bind double-stranded RNA.
<b>Tissue specificity</b>	Ubiquitously expressed.
<b>Sequence similarities</b>	Belongs to the LRRFIP family.
<b>Developmental stage</b>	Widely expressed in fetal tissues.
<b>Cellular localization</b>	Nucleus. Cytoplasm.

## Images



LRRFIP1 antibody (ab56486) used in immunohistochemistry at 1ug/ml on formalin fixed and paraffin embedded human small Intestine.

Immunohistochemistry (Formalin/PFA-fixed paraffin-embedded sections) - Anti-LRRFIP1 antibody (ab56486)



LRRFIP1 antibody (ab56486) at 1ug/lane + HeLa cell lysate at 25ug/lane.

Western blot - Anti-LRRFIP1 antibody (ab56486)

**Please note:** All products are "FOR RESEARCH USE ONLY AND ARE NOT INTENDED FOR DIAGNOSTIC OR THERAPEUTIC USE"

## Our Abpromise to you: Quality guaranteed and expert technical support

- Replacement or refund for products not performing as stated on the datasheet
- Valid for 12 months from date of delivery
- Response to your inquiry within 24 hours

- We provide support in Chinese, English, French, German, Japanese and Spanish
- Extensive multi-media technical resources to help you
- We investigate all quality concerns to ensure our products perform to the highest standards

If the product does not perform as described on this datasheet, we will offer a refund or replacement. For full details of the Abpromise, please visit <https://www.abcam.com/abpromise> or contact our technical team.

### **Terms and conditions**

---

- Guarantee only valid for products bought direct from Abcam or one of our authorized distributors