

Product datasheet

Anti-EPB41L3 antibody ab57039

1 Image

Overview

| | |
|----------------------------|---|
| Product name | Anti-EPB41L3 antibody |
| Description | Mouse monoclonal to EPB41L3 |
| Host species | Mouse |
| Tested applications | Suitable for: WB |
| Species reactivity | Reacts with: Human |
| Immunogen | Recombinant fragment: EQEETAAASR ERQEEQSAAI HISETLEQKP HFESSTVKTE TISFGSVSPG GVKLEISTKE VPVVHTETKT ITYESSQVDP GTDLEPGVLM SAQ, corresponding to amino acids 915-1008 of Human EPB41L3 Run BLAST with ExPASy Run BLAST with NCBI |

Properties

| | |
|-----------------------------|---|
| Form | Liquid |
| Storage instructions | Shipped at 4°C. Upon delivery aliquot and store at -20°C or -80°C. Avoid repeated freeze / thaw cycles. |
| Storage buffer | Preservative: None PBS, pH 7.2 |
| Purity | Protein G purified |
| Clonality | Monoclonal |
| Isotype | IgG2a |
| Light chain type | kappa |

Applications

Our [Abpromise guarantee](#) covers the use of **ab57039** in the following tested applications.

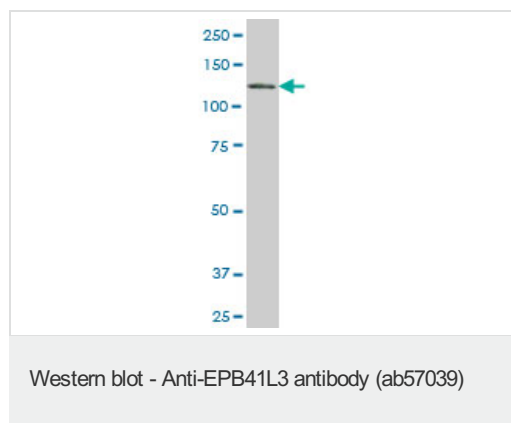
The application notes include recommended starting dilutions; optimal dilutions/concentrations should be determined by the end user.

| Application | Abreviews | Notes |
|-------------|-----------|--|
| WB | | Use a concentration of 1 - 5 µg/ml. Predicted molecular weight: 121 kDa. |

Target

| | |
|------------------------------|--|
| Function | Critical growth regulator in the pathogenesis of meningiomas. |
| Tissue specificity | Expressed at high levels in brain, with lower levels in kidney, intestine, and testis. |
| Sequence similarities | Contains 1 FERM domain. |
| Cellular localization | Cytoplasm > cytoskeleton. |

Images



EPB41L3 antibody (ab57039) at 1ug/lane +
HepG2 cell lysate at 25ug/lane.

Please note: All products are "FOR RESEARCH USE ONLY AND ARE NOT INTENDED FOR DIAGNOSTIC OR THERAPEUTIC USE"

Our Abpromise to you: Quality guaranteed and expert technical support

- Replacement or refund for products not performing as stated on the datasheet
- Valid for 12 months from date of delivery
- Response to your inquiry within 24 hours
- We provide support in Chinese, English, French, German, Japanese and Spanish
- Extensive multi-media technical resources to help you
- We investigate all quality concerns to ensure our products perform to the highest standards

If the product does not perform as described on this datasheet, we will offer a refund or replacement. For full details of the Abpromise, please visit <https://www.abcam.com/abpromise> or contact our technical team.

Terms and conditions

- Guarantee only valid for products bought direct from Abcam or one of our authorized distributors