

Product datasheet

Anti-KCNMB3 antibody ab57219

[1 References](#) [1 Image](#)

Overview

Product name	Anti-KCNMB3 antibody
Description	Mouse monoclonal to KCNMB3
Host species	Mouse
Tested applications	Suitable for: WB
Species reactivity	Reacts with: Human
Immunogen	Recombinant fragment: FMLSIQREES TCTAIHTDIM DDWLDCAFTC GVHCHGQGKY PCLQVFNLS HPGQKALLHY NEEAVQINPK CFYTPKCHQD RNDLLNSALD IKEFFDHKNG , corresponding to amino acids 82-182 of Human KCNMB3 Run BLAST with ExPASy Run BLAST with NCBI

Properties

Form	Liquid
Storage instructions	Shipped at 4°C. Upon delivery aliquot and store at -20°C or -80°C. Avoid repeated freeze / thaw cycles.
Storage buffer	Preservative: None PBS, pH 7.2
Purity	Protein G purified
Clonality	Monoclonal
Isotype	IgG2a
Light chain type	kappa

Applications

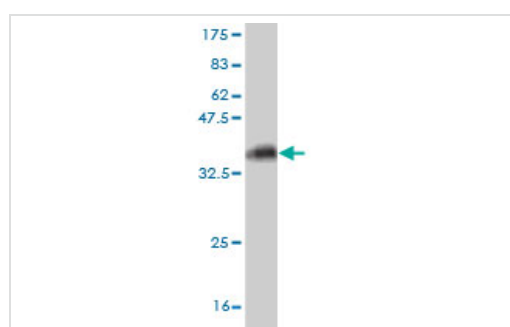
Our [Abpromise guarantee](#) covers the use of **ab57219** in the following tested applications.

The application notes include recommended starting dilutions; optimal dilutions/concentrations should be determined by the end user.

Application	Abreviews	Notes

Application	Abreviews	Notes
WB		Use a concentration of 1 - 5 µg/ml. This antibody has only been tested in WB against the recombinant fragment used as immunogen. We have no data on the detection of endogenous protein.
Target		
Function		Regulatory subunit of the calcium activated potassium KCNMA1 (maxiK) channel. Modulates the calcium sensitivity and gating kinetics of KCNMA1, thereby contributing to KCNMA1 channel diversity. Alters the functional properties of the current expressed by the KCNMA1 channel. Isoform 2, isoform 3 and isoform 4 partially inactivate the current of KCNBMA. Isoform 4 induces a fast and incomplete inactivation of KCNMA1 channel that is detectable only at large depolarizations. In contrast, isoform 1 does not induce detectable inactivation of KCNMA1. Two or more subunits of KCNMB3 are required to block the KCNMA1 tetramer.
Tissue specificity		Isoform 1, isoform 3 and isoform 4 are widely expressed. Isoform 2 is expressed placenta, pancreas, kidney and heart. Isoform 1 and isoform 3 are highly expressed in pancreas and testis.
Sequence similarities		Belongs to the KCNMB (TC 8.A.14.1) family. KCNMB3 subfamily.
Domain		Isoform 4 cytoplasmic N-terminal domain participates in the partial inactivation of KCNMA1, possibly by binding to a receptor site. The extracellular domain forms gates to block ion permeation, providing a mechanism by which current can be rapidly diminished upon cellular repolarization.
Post-translational modifications		N-glycosylated. The extracellular domain contains disulfide bond essential for the gating mechanism.
Cellular localization		Membrane.

Images



Western blot - Anti-KCNMB3 antibody (ab57219)

Western blot against tagged recombinant protein immunogen using ab57219 KCNMB3 antibody at 1µg/ml. Predicted band size of immunogen is 37 kDa

Please note: All products are "FOR RESEARCH USE ONLY AND ARE NOT INTENDED FOR DIAGNOSTIC OR THERAPEUTIC USE"

Our Abpromise to you: Quality guaranteed and expert technical support

- Replacement or refund for products not performing as stated on the datasheet

- Valid for 12 months from date of delivery
- Response to your inquiry within 24 hours

- We provide support in Chinese, English, French, German, Japanese and Spanish
- Extensive multi-media technical resources to help you
- We investigate all quality concerns to ensure our products perform to the highest standards

If the product does not perform as described on this datasheet, we will offer a refund or replacement. For full details of the Abpromise, please visit <https://www.abcam.com/abpromise> or contact our technical team.

Terms and conditions

- Guarantee only valid for products bought direct from Abcam or one of our authorized distributors