

## Product datasheet

# Anti-SENTP6 antibody ab57239

[1 References](#) [2 Images](#)

### Overview

<b>Product name</b>	Anti-SENTP6 antibody
<b>Description</b>	Mouse monoclonal to SENTP6
<b>Host species</b>	Mouse
<b>Tested applications</b>	<b>Suitable for:</b> WB, IHC-P
<b>Species reactivity</b>	<b>Reacts with:</b> Human
<b>Immunogen</b>	Recombinant fragment, corresponding to amino acids 1-111 of Human SENTP6

### Properties

<b>Form</b>	Liquid
<b>Storage instructions</b>	Shipped at 4°C. Upon delivery aliquot and store at -20°C or -80°C. Avoid repeated freeze / thaw cycles.
<b>Storage buffer</b>	Preservative: None PBS, pH 7.2
<b>Purity</b>	Protein G purified
<b>Clonality</b>	Monoclonal
<b>Isotype</b>	IgG2a
<b>Light chain type</b>	kappa

### Applications

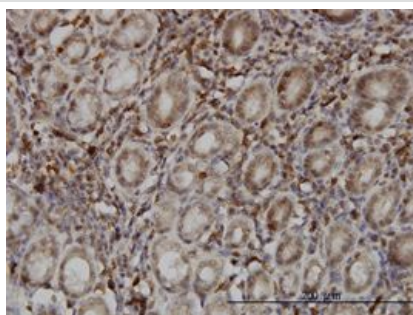
Our [Abpromise guarantee](#) covers the use of **ab57239** in the following tested applications.

The application notes include recommended starting dilutions; optimal dilutions/concentrations should be determined by the end user.

Application	Abreviews	Notes
WB		Use a concentration of 1 - 5 µg/ml. Predicted molecular weight: 126 kDa.
IHC-P		Use a concentration of 3 µg/ml.

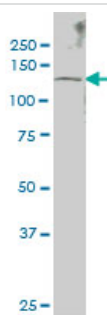
<b>Function</b>	Protease that deconjugates SUMO1, SUMO2 and SUMO3 from targeted proteins. Processes preferentially poly-SUMO2 and poly-SUMO3 chains, but does not efficiently process SUMO1, SUMO2 and SUMO3 precursors. Deconjugates SUMO1 from RXRA, leading to transcriptional activation. Involved in chromosome alignment and spindle assembly, by regulating the kinetochore CENPH-CENPI-CENPK complex. Desumoylates PML and CENPI, protecting them from degradation by the ubiquitin ligase RNF4, which targets polysumoylated proteins for proteasomal degradation. Desumoylates also RPA1, thus preventing recruitment of RAD51 to the DNA damage foci to initiate DNA repair through homologous recombination.
<b>Tissue specificity</b>	Highly expressed in reproductive organs, such as testis, ovary and prostate.
<b>Pathway</b>	Protein modification; protein sumoylation.
<b>Sequence similarities</b>	Belongs to the peptidase C48 family.
<b>Cellular localization</b>	Nucleus.

**Images**



SENP6 antibody (ab57239) used in immunohistochemistry at 3ug/ml on formalin fixed and paraffin embedded human stomach.

Immunohistochemistry (Formalin/PFA-fixed paraffin-embedded sections) - Anti-SENP6 antibody (ab57239)



SENP6 antibody (ab57239) at 1ug/lane + IMR-32 cell lysate at 25ug/lane.

Western blot - Anti-SENP6 antibody (ab57239)

**Please note:** All products are "FOR RESEARCH USE ONLY AND ARE NOT INTENDED FOR DIAGNOSTIC OR THERAPEUTIC USE"

**Our Promise to you: Quality guaranteed and expert technical support**

- Replacement or refund for products not performing as stated on the datasheet

- Valid for 12 months from date of delivery
- Response to your inquiry within 24 hours
  
- We provide support in Chinese, English, French, German, Japanese and Spanish
- Extensive multi-media technical resources to help you
- We investigate all quality concerns to ensure our products perform to the highest standards

If the product does not perform as described on this datasheet, we will offer a refund or replacement. For full details of the Abpromise, please visit <https://www.abcam.com/abpromise> or contact our technical team.

### **Terms and conditions**

---

- Guarantee only valid for products bought direct from Abcam or one of our authorized distributors