

Product datasheet

Anti-RHEBL1 antibody ab57333

[1 References](#) [1 Image](#)

Overview

Product name	Anti-RHEBL1 antibody
Description	Mouse monoclonal to RHEBL1
Host species	Mouse
Tested applications	Suitable for: WB
Species reactivity	Reacts with: Recombinant fragment Predicted to work with: Human
Immunogen	Recombinant fragment: VTSLHSFQVI ESLYQKLHEG HGKTRVPVVL VGNKADLSPE REVQAVEGKK LAESWGATFM ESSARENQLT QGIFTKVIQE IARVENSYGQ ERRCHLM, corresponding to amino acids 87-183 of Human RHEBL1 Run BLAST with ExPASy Run BLAST with NCBI

Properties

Form	Liquid
Storage instructions	Shipped at 4°C. Upon delivery aliquot and store at -20°C or -80°C. Avoid repeated freeze / thaw cycles.
Storage buffer	Preservative: None PBS, pH 7.2
Purity	Protein G purified
Clonality	Monoclonal
Isotype	IgG2a
Light chain type	kappa

Applications

Our [Abpromise guarantee](#) covers the use of **ab57333** in the following tested applications.

The application notes include recommended starting dilutions; optimal dilutions/concentrations should be determined by the end user.

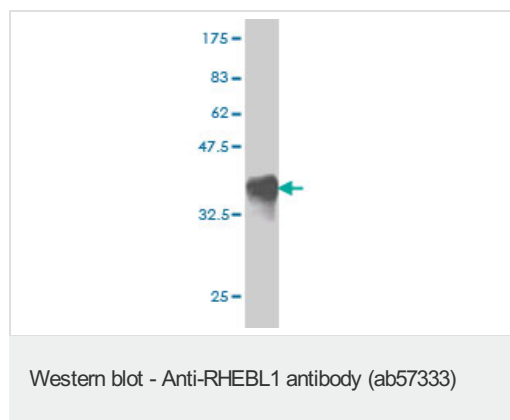
Application	Abreviews	Notes
-------------	-----------	-------

Application	Abreviews	Notes
WB		Use a concentration of 1 - 5 µg/ml. This antibody has only been tested in WB against the recombinant fragment used as immunogen. We have no data on the detection of endogenous protein.

Target

Function	Binds GTP and exhibits intrinsic GTPase activity. May activate NF-kappa-B-mediated gene transcription. Promotes signal transduction through MTOR, activates RPS6KB1, and is a downstream target of the small GTPase-activating proteins TSC1 and TSC2.
Tissue specificity	Ubiquitously expressed. Expression increased at least 2-fold in several tumor cell lines.
Sequence similarities	Belongs to the small GTPase superfamily. Rheb family.
Cellular localization	Cell membrane. Cytoplasm.

Images



Western blot against tagged recombinant protein immunogen using ab57333 RHEBL1 antibody at 1ug/ml. Predicted band size of immunogen is 37 kDa

Please note: All products are "FOR RESEARCH USE ONLY AND ARE NOT INTENDED FOR DIAGNOSTIC OR THERAPEUTIC USE"

Our Abpromise to you: Quality guaranteed and expert technical support

- Replacement or refund for products not performing as stated on the datasheet
- Valid for 12 months from date of delivery
- Response to your inquiry within 24 hours
- We provide support in Chinese, English, French, German, Japanese and Spanish
- Extensive multi-media technical resources to help you
- We investigate all quality concerns to ensure our products perform to the highest standards

If the product does not perform as described on this datasheet, we will offer a refund or replacement. For full details of the Abpromise, please visit <https://www.abcam.com/abpromise> or contact our technical team.

Terms and conditions

- Guarantee only valid for products bought direct from Abcam or one of our authorized distributors