

## Product datasheet

# Anti-Staufen antibody [3D8] ab57828

★ ★ ★ ★ ★ 2 Abreviews 1 References 1 Image

### Overview

<b>Product name</b>	Anti-Staufen antibody [3D8]
<b>Description</b>	Mouse monoclonal [3D8] to Staufen
<b>Host species</b>	Mouse
<b>Tested applications</b>	<b>Suitable for:</b> WB, ICC/IF
<b>Species reactivity</b>	<b>Reacts with:</b> Human
<b>Immunogen</b>	Recombinant fragment: PHGPLTRPSE QLDYLSRVQG FQVEYKDFPK NNKNEFVSLI NCSSQPPLIS HGIGKDVESC HDMAALNILK LLELDQQST EMPRTGNGPM SVCGRC, corresponding to amino acids 401-497 of Human Staufen <a href="#">Run BLAST with ExPASy</a> <a href="#">Run BLAST with NCBI</a>

### Properties

<b>Form</b>	Liquid
<b>Storage instructions</b>	Shipped at 4°C. Upon delivery aliquot and store at -20°C or -80°C. Avoid repeated freeze / thaw cycles.
<b>Storage buffer</b>	Preservative: None PBS, pH 7.2
<b>Purity</b>	Protein G purified
<b>Clonality</b>	Monoclonal
<b>Clone number</b>	3D8
<b>Isotype</b>	IgG2b
<b>Light chain type</b>	kappa

### Applications

Our [Abpromise guarantee](#) covers the use of **ab57828** in the following tested applications.

The application notes include recommended starting dilutions; optimal dilutions/concentrations should be determined by the end user.

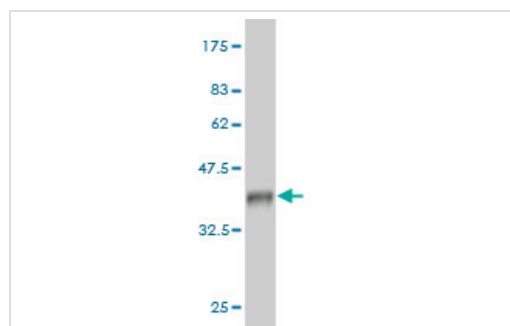
Application	Abreviews	Notes
-------------	-----------	-------

Application	Abreviews	Notes
WB		Use a concentration of 1 - 5 µg/ml. This antibody has only been tested in WB against the recombinant fragment used as immunogen. We have no data on the detection of endogenous protein.
ICC/IF	★ ★ ★ ★ ★	Use at an assay dependent concentration. PubMed: 22383705

## Target

<b>Function</b>	Binds double-stranded RNA (regardless of the sequence) and tubulin. May play a role in specific positioning of mRNAs at given sites in the cell by cross-linking cytoskeletal and RNA components, and in stimulating their translation at the site.
<b>Tissue specificity</b>	Widely expressed. Expressed in brain, pancreas, heart, skeletal muscles, liver, lung, kidney and placenta.
<b>Sequence similarities</b>	Contains 3 DRBM (double-stranded RNA-binding) domains.
<b>Domain</b>	One of the DRDB could be involved in RER binding. The C-terminal contains the tubulin binding domain (TBD).
<b>Cellular localization</b>	Cytoplasm. Rough endoplasmic reticulum. Localizes exclusively with the rough reticulum endoplasmic.

## Images



Western blot - Anti-Staufen antibody [3D8]  
(ab57828)

Western blot against tagged recombinant protein immunogen using ab57828 Staufen antibody at 1ug/ml. Predicted band size of immunogen is 37 kDa

**Please note:** All products are "FOR RESEARCH USE ONLY AND ARE NOT INTENDED FOR DIAGNOSTIC OR THERAPEUTIC USE"

## Our Abpromise to you: Quality guaranteed and expert technical support

- Replacement or refund for products not performing as stated on the datasheet
- Valid for 12 months from date of delivery
- Response to your inquiry within 24 hours
- We provide support in Chinese, English, French, German, Japanese and Spanish
- Extensive multi-media technical resources to help you

- We investigate all quality concerns to ensure our products perform to the highest standards

If the product does not perform as described on this datasheet, we will offer a refund or replacement. For full details of the Abpromise, please visit <https://www.abcam.com/abpromise> or contact our technical team.

### **Terms and conditions**

---

- Guarantee only valid for products bought direct from Abcam or one of our authorized distributors