

Product datasheet

Anti-EMILIN2 antibody ab57878

1 Image

Overview

Product name	Anti-EMILIN2 antibody
Description	Mouse monoclonal to EMILIN2
Host species	Mouse
Tested applications	Suitable for: WB
Species reactivity	Reacts with: Human
Immunogen	Recombinant fragment, corresponding to amino acids 121-231 of Human EMILIN2

Properties

Form	Liquid
Storage instructions	Shipped at 4°C. Upon delivery aliquot and store at -20°C or -80°C. Avoid repeated freeze / thaw cycles.
Storage buffer	Preservative: None PBS, pH 7.2
Purity	Protein G purified
Clonality	Monoclonal
Isotype	IgG3
Light chain type	kappa

Applications

Our [Abpromise guarantee](#) covers the use of **ab57878** in the following tested applications.

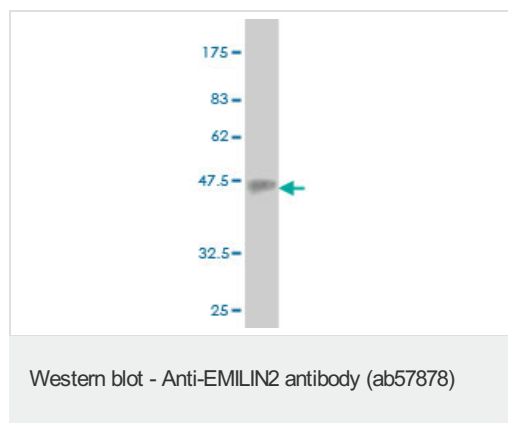
The application notes include recommended starting dilutions; optimal dilutions/concentrations should be determined by the end user.

Application	Abreviews	Notes
WB		Use a concentration of 1 - 5 µg/ml. This antibody has only been tested in WB against the recombinant fragment used as immunogen. We have no data on the detection of endogenous protein.

Target

Function	May be responsible for anchoring smooth muscle cells to elastic fibers, and may be involved not only in the formation of the elastic fiber, but also in the processes that regulate vessel assembly. Has cell adhesive capacity.
Tissue specificity	Highest levels are present in fetal heart and adult lung. Intermediate levels in peripheral leukocytes, placenta, and spinal cord and low expression in fetal brain, spleen, thymus, and lung and in adult heart, aorta, testis, bone marrow, small intestine, thymus, lymph node, and appendix.
Sequence similarities	Contains 1 C1q domain. Contains 1 collagen-like domain. Contains 1 EMI domain.
Cellular localization	Secreted > extracellular space > extracellular matrix. Found mainly at the interface between amorphous elastin and microfibrils.

Images



Western blot against tagged recombinant protein immunogen using ab57878 EMILIN2 antibody at 1ug/ml. Predicted band size of immunogen is 38 kDa

Please note: All products are "FOR RESEARCH USE ONLY AND ARE NOT INTENDED FOR DIAGNOSTIC OR THERAPEUTIC USE"

Our Abpromise to you: Quality guaranteed and expert technical support

- Replacement or refund for products not performing as stated on the datasheet
- Valid for 12 months from date of delivery
- Response to your inquiry within 24 hours
- We provide support in Chinese, English, French, German, Japanese and Spanish
- Extensive multi-media technical resources to help you
- We investigate all quality concerns to ensure our products perform to the highest standards

If the product does not perform as described on this datasheet, we will offer a refund or replacement. For full details of the Abpromise, please visit <https://www.abcam.com/abpromise> or contact our technical team.

Terms and conditions

- Guarantee only valid for products bought direct from Abcam or one of our authorized distributors