

Product datasheet

Anti-PACE4 antibody ab58226

1 Image

Overview

|                            |   |
|----------------------------|---|
| <b>Product name</b>        | Anti-PACE4 antibody   |
| <b>Description</b>         | Mouse monoclonal to PACE4   |
| <b>Host species</b>        | Mouse   |
| <b>Tested applications</b> | <b>Suitable for:</b> WB   |
| <b>Species reactivity</b>  | <b>Reacts with:</b> Human   |
| <b>Immunogen</b>           | Recombinant fragment, corresponding to amino acids 860-970 of Human PACE4 |

Properties

|                             |   |
|-----------------------------|---|
| <b>Form</b>                 | Liquid  |
| <b>Storage instructions</b> | Shipped at 4°C. Upon delivery aliquot and store at -20°C or -80°C. Avoid repeated freeze / thaw cycles. |
| <b>Storage buffer</b>       | Preservative: None<br>PBS, pH 7.2   |
| <b>Purity</b>               | Protein G purified  |
| <b>Clonality</b>            | Monoclonal  |
| <b>Isotype</b>              | IgG2a   |
| <b>Light chain type</b>     | kappa   |

Applications

Our [Abpromise guarantee](#) covers the use of **ab58226** in the following tested applications.

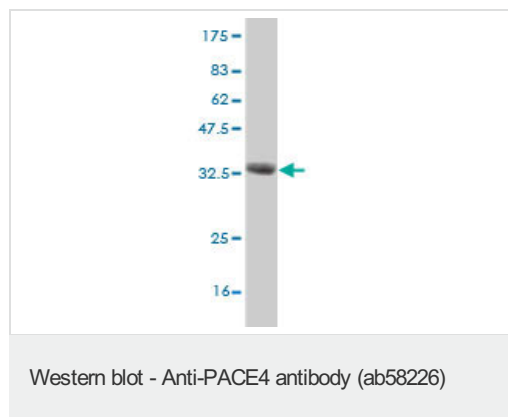
The application notes include recommended starting dilutions; optimal dilutions/concentrations should be determined by the end user.

| Application | Abreviews | Notes   |
|-------------|-----------|---|
| WB          |           | Use a concentration of 1 - 5 µg/ml.<br>This antibody has only been tested in WB against the recombinant fragment used as immunogen. We have no data on the detection of endogenous protein. |

## Target

|                              |  |
|------------------------------|--|
| <b>Function</b>              | Likely to represent an endoprotease activity within the constitutive secretory pathway, with unique restricted distribution in both neuroendocrine and non-neuroendocrine tissues and capable of cleavage at the RX(K/R)R consensus motif.   |
| <b>Tissue specificity</b>    | Each PACE4 isoform exhibits a unique restricted distribution. Isoform PACE4A-I is expressed in heart, brain, placenta, lung, skeletal muscle, kidney, pancreas, but at comparatively higher levels in the liver. Isoform PACE4A-II is at least expressed in placenta. Isoform PACE4B was only found in the embryonic kidney cell line from which it was isolated. Isoform PACE4C and isoform PACE4D are expressed in placenta. Isoform PACE4E-I is expressed in cerebellum, placenta and pituitary. Isoform PACE4E-II is at least present in cerebellum. |
| <b>Sequence similarities</b> | Belongs to the peptidase S8 family.<br>Contains 1 homo B/P domain.<br>Contains 1 PLAC domain.  |
| <b>Domain</b>                | The propeptide domain acts as an intramolecular chaperone assisting the folding of the zymogen within the endoplasmic reticulum. Isoform PACE4D lacks the propeptide domain.   |
| <b>Cellular localization</b> | Secreted; Endomembrane system. Retained intracellularly probably through a hydrophobic cluster in their C-terminus and Endoplasmic reticulum. Not secreted, remains probably in zymogen form in endoplasmic reticulum.   |

## Images



Western blot against tagged recombinant protein immunogen using ab58226 PACE4 antibody at 1ug/ml. Predicted band size of immunogen is 38 kDa

**Please note:** All products are "FOR RESEARCH USE ONLY AND ARE NOT INTENDED FOR DIAGNOSTIC OR THERAPEUTIC USE"

## Our Abpromise to you: Quality guaranteed and expert technical support

- Replacement or refund for products not performing as stated on the datasheet
- Valid for 12 months from date of delivery
- Response to your inquiry within 24 hours
- We provide support in Chinese, English, French, German, Japanese and Spanish
- Extensive multi-media technical resources to help you
- We investigate all quality concerns to ensure our products perform to the highest standards

If the product does not perform as described on this datasheet, we will offer a refund or replacement. For full details of the Abpromise, please visit <https://www.abcam.com/abpromise> or contact our technical team.

## Terms and conditions

---

- Guarantee only valid for products bought direct from Abcam or one of our authorized distributors