

## Product datasheet

# Anti-Ube2H antibody ab58261

[2 Images](#)

### Overview

<b>Product name</b>	Anti-Ube2H antibody
<b>Description</b>	Mouse monoclonal to Ube2H
<b>Host species</b>	Mouse
<b>Tested applications</b>	<b>Suitable for:</b> WB, ICC/IF
<b>Species reactivity</b>	<b>Reacts with:</b> Human
<b>Immunogen</b>	Recombinant full length protein, corresponding to amino acids 1-184 of Human Ube2H

### Properties

<b>Form</b>	Liquid
<b>Storage instructions</b>	Shipped at 4°C. Upon delivery aliquot and store at -20°C or -80°C. Avoid repeated freeze / thaw cycles.
<b>Storage buffer</b>	Preservative: None PBS, pH 7.2
<b>Purity</b>	Protein G purified
<b>Clonality</b>	Monoclonal
<b>Isotype</b>	IgG2a
<b>Light chain type</b>	kappa

### Applications

Our [Abpromise guarantee](#) covers the use of **ab58261** in the following tested applications.

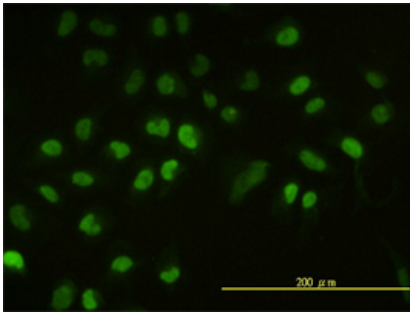
The application notes include recommended starting dilutions; optimal dilutions/concentrations should be determined by the end user.

Application	Abreviews	Notes
WB		Use a concentration of 1 - 5 µg/ml. Predicted molecular weight: 21 kDa.
ICC/IF		Use a concentration of 10 µg/ml.

## Target

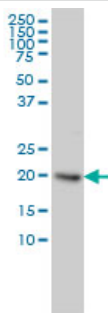
<b>Function</b>	Accepts ubiquitin from the E1 complex and catalyzes its covalent attachment to other proteins. In vitro catalyzes 'Lys-11'- and 'Lys-48'-linked polyubiquitination. Capable, in vitro, to ubiquitinate histone H2A.
<b>Pathway</b>	Protein modification; protein ubiquitination.
<b>Sequence similarities</b>	Belongs to the ubiquitin-conjugating enzyme family.

## Images



Ube2H antibody (ab58261) used in immunofluorescence at 10ug/ml on HeLa cells.

Immunocytochemistry/ Immunofluorescence - Anti-Ube2H antibody (ab58261)



Ube2H antibody (ab58261) at 1ug/lane + HeLa cell lysate at 25ug/lane.

Western blot - Ube2H antibody (ab58261)

**Please note:** All products are "FOR RESEARCH USE ONLY AND ARE NOT INTENDED FOR DIAGNOSTIC OR THERAPEUTIC USE"

## Our Abpromise to you: Quality guaranteed and expert technical support

- Replacement or refund for products not performing as stated on the datasheet
- Valid for 12 months from date of delivery
- Response to your inquiry within 24 hours
- We provide support in Chinese, English, French, German, Japanese and Spanish
- Extensive multi-media technical resources to help you
- We investigate all quality concerns to ensure our products perform to the highest standards

If the product does not perform as described on this datasheet, we will offer a refund or replacement. For full details of the Abpromise,

please visit <https://www.abcam.com/abpromise> or contact our technical team.

## **Terms and conditions**

---

- Guarantee only valid for products bought direct from Abcam or one of our authorized distributors