


Product datasheet

Anti-NFAT4 antibody ab59236

1 Image

Overview

<b>Product name</b>	Anti-NFAT4 antibody
<b>Description</b>	Rabbit polyclonal to NFAT4
<b>Host species</b>	Rabbit
<b>Tested applications</b>	<b>Suitable for:</b> WB, ELISA
<b>Species reactivity</b>	<b>Reacts with:</b> Human <b>Predicted to work with:</b> Mouse 
<b>Immunogen</b>	Synthetic non-phosphopeptide derived from human NFAT4 around the phosphorylation site of serine 165 (S-P-S <sup>P</sup> -P-A).
<b>Positive control</b>	HeLa cell extracts treated with Ca <sup>+</sup> (40nM, 30mins).

Properties

<b>Form</b>	Liquid
<b>Storage instructions</b>	Shipped at 4°C. Store at -20°C. Stable for 12 months at -20°C.
<b>Storage buffer</b>	Preservative: 0.02% Sodium Azide Constituents: 50% Glycerol, PBS (without Mg <sup>2+</sup> and Ca <sup>2+</sup> ), 150mM Sodium chloride, pH 7.4
<b>Purity</b>	Immunogen affinity purified
<b>Clonality</b>	Polyclonal
<b>Isotype</b>	IgG

Applications

Our [Abpromise guarantee](#) covers the use of **ab59236** in the following tested applications.

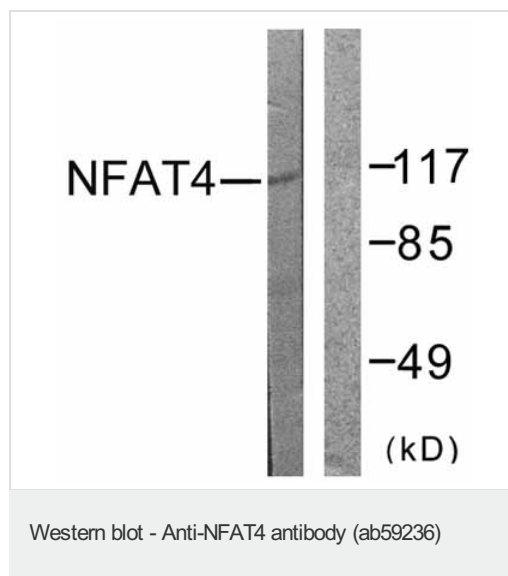
The application notes include recommended starting dilutions; optimal dilutions/concentrations should be determined by the end user.

Application	Abreviews	Notes
WB		1/500 - 1/1000. Detects a band of approximately 116 kDa (predicted molecular weight: 116 kDa).
ELISA		1/10000.

## Target

<b>Function</b>	Plays a role in the inducible expression of cytokine genes in T-cells, especially in the induction of the IL-2.
<b>Tissue specificity</b>	Isoform 1 is predominantly expressed in thymus and is also found in peripheral blood leukocytes and kidney. Isoform 2 is predominantly expressed in skeletal muscle and is also found in thymus, kidney, testis, spleen, prostate, ovary, small intestine, heart, placenta and pancreas. Isoform 3 is expressed in thymus and kidney. Isoform 4 is expressed in thymus and skeletal muscle.
<b>Sequence similarities</b>	Contains 1 RHD (Rel-like) domain.
<b>Domain</b>	Rel Similarity Domain (RSD) allows DNA-binding and cooperative interactions with AP1 factors.
<b>Post-translational modifications</b>	Phosphorylated by NFATC-kinase; dephosphorylated by calcineurin.
<b>Cellular localization</b>	Cytoplasm. Nucleus. Cytoplasmic for the phosphorylated form and nuclear after activation that is controlled by calcineurin-mediated dephosphorylation. Rapid nuclear exit of NFATC is thought to be one mechanism by which cells distinguish between sustained and transient calcium signals. The subcellular localization of NFATC plays a key role in the regulation of gene transcription.

## Images



**All lanes :** Anti-NFAT4 antibody (ab59236) at 1/500 dilution

**Lane 1 :** HeLa cell extracts treated with Ca<sup>+</sup> (40nM, 30mins)

**Lane 2 :** HeLa cell extracts treated with Ca<sup>+</sup> (40nM, 30mins) and with the immunising peptide

**Predicted band size:** 116 kDa

**Observed band size:** 116 kDa

**Please note:** All products are "FOR RESEARCH USE ONLY AND ARE NOT INTENDED FOR DIAGNOSTIC OR THERAPEUTIC USE"

## Our Abpromise to you: Quality guaranteed and expert technical support

- Replacement or refund for products not performing as stated on the datasheet
- Valid for 12 months from date of delivery
- Response to your inquiry within 24 hours
- We provide support in Chinese, English, French, German, Japanese and Spanish
- Extensive multi-media technical resources to help you
- We investigate all quality concerns to ensure our products perform to the highest standards

If the product does not perform as described on this datasheet, we will offer a refund or replacement. For full details of the Abpromise, please visit <https://www.abcam.com/abpromise> or contact our technical team.

## Terms and conditions

---

- Guarantee only valid for products bought direct from Abcam or one of our authorized distributors