

Product datasheet

Anti-WAVE 1 (phospho Y125) antibody ab59280

1 Image

Overview

<b>Product name</b>	Anti-WAVE 1 (phospho Y125) antibody
<b>Description</b>	Rabbit polyclonal to WAVE 1 (phospho Y125)
<b>Host species</b>	Rabbit
<b>Specificity</b>	Detects endogenous levels of WAVE1 only when phosphorylated at tyrosine 125.
<b>Tested applications</b>	<b>Suitable for:</b> ELISA, IHC-P
<b>Species reactivity</b>	<b>Reacts with:</b> Mouse, Human
<b>Immunogen</b>	Synthetic phosphopeptide derived from human WAVE1 around the phosphorylation site of tyrosine 125 (E-T-Y <sup>P</sup> -D-V).
<b>Positive control</b>	Human colon carcinoma.

Properties

<b>Form</b>	Liquid
<b>Storage instructions</b>	Shipped at 4°C. Upon delivery aliquot and store at -20°C. Avoid freeze / thaw cycles.
<b>Storage buffer</b>	Preservative: 0.02% Sodium Azide Constituents: 50% Glycerol, PBS (without Mg <sup>2+</sup> and Ca <sup>2+</sup> ), 150mM Sodium chloride, pH 7.4
<b>Purity</b>	Immunogen affinity purified
<b>Clonality</b>	Polyclonal
<b>Isotype</b>	IgG

Applications

Our [Abpromise guarantee](#) covers the use of **ab59280** in the following tested applications.

The application notes include recommended starting dilutions; optimal dilutions/concentrations should be determined by the end user.

Application	Abreviews	Notes
ELISA		1/5000.
IHC-P		Use at an assay dependent concentration.

## Target

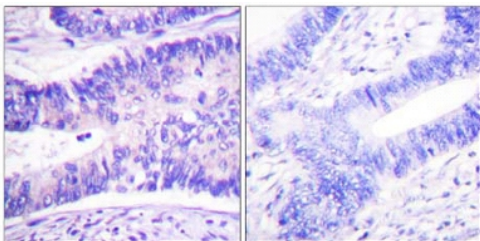
---

<b>Function</b>	Downstream effector molecule involved in the transmission of signals from tyrosine kinase receptors and small GTPases to the actin cytoskeleton. Promotes formation of actin filaments. Part of the WAVE complex that regulates lamellipodia formation. The WAVE complex regulates actin filament reorganization via its interaction with the Arp2/3 complex.
<b>Tissue specificity</b>	Highly expressed in brain. Lowly expressed in testis, ovary, colon, kidney, pancreas, thymus, small intestine and peripheral blood.
<b>Sequence similarities</b>	Belongs to the SCAR/WAVE family. Contains 1 WH2 domain.
<b>Domain</b>	Binds the Arp2/3 complex through the C-terminal region and actin through verprolin homology (VPH) domain.
<b>Cellular localization</b>	Cytoplasm > cytoskeleton. Dot-like pattern in the cytoplasm. Concentrated in Rac-regulated membrane-ruffling areas.

---

## Images

---



Ab59280 at 1/50 dilution staining human colon carcinoma without (left) and with (right) immunizing peptide; paraffin embedded.

Immunohistochemistry (Paraffin-embedded sections)  
- WAVE 1 (phospho Y125) antibody (ab59280)

**Please note:** All products are "FOR RESEARCH USE ONLY AND ARE NOT INTENDED FOR DIAGNOSTIC OR THERAPEUTIC USE"

## Our Abpromise to you: Quality guaranteed and expert technical support

---

- Replacement or refund for products not performing as stated on the datasheet
- Valid for 12 months from date of delivery
- Response to your inquiry within 24 hours
- We provide support in Chinese, English, French, German, Japanese and Spanish
- Extensive multi-media technical resources to help you
- We investigate all quality concerns to ensure our products perform to the highest standards

If the product does not perform as described on this datasheet, we will offer a refund or replacement. For full details of the Abpromise, please visit <https://www.abcam.com/abpromise> or contact our technical team.

## Terms and conditions

---

- Guarantee only valid for products bought direct from Abcam or one of our authorized distributors