


Product datasheet

Anti-LOC342293 antibody ab59651

2 Images

Overview

Product name	Anti-LOC342293 antibody
Description	Rabbit polyclonal to LOC342293
Host species	Rabbit
Tested applications	Suitable for: WB, IHC-P
Species reactivity	Reacts with: Human Predicted to work with: Mouse, Rat, Rabbit, Horse, Chicken, Guinea pig, Cow, Dog, Pig, Caenorhabditis elegans, Zebrafish 
Immunogen	A region within synthetic peptide: AARLINTYSE GNKRRLSTAI ALMGRSSVIF LDEPSTGMDP VARRLLWNMV, corresponding to N terminal amino acids 37-86 of Human LOC342293 Run BLAST with ExPASy Run BLAST with NCBI
Positive control	HepG2 cell lysate and Human kidney tissue.

Properties

Form	Liquid
Storage instructions	Shipped at 4°C. Upon delivery aliquot and store at -20°C. Avoid freeze / thaw cycles.
Storage buffer	Preservative: None Constituents: 2% Sucrose, PBS
Purity	Protein A purified
Clonality	Polyclonal
Isotype	IgG

Applications

Our [Abpromise guarantee](#) covers the use of **ab59651** in the following tested applications.

The application notes include recommended starting dilutions; optimal dilutions/concentrations should be determined by the end user.

Application	Abreviews	Notes
WB		Use a concentration of 1.25 µg/ml. Detects a band of approximately 36 kDa (predicted molecular weight: 31 kDa). Good results were obtained when blocked with 5% non-fat dry milk in 0.05% PBS-T.

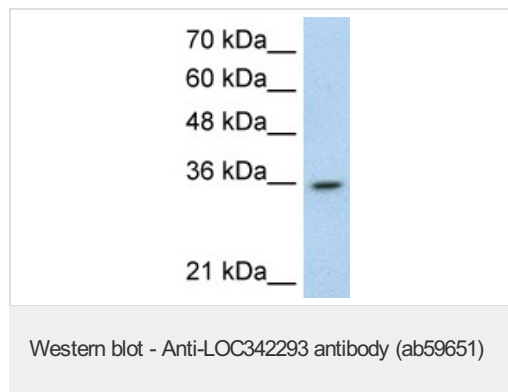
Application	Abreviews	Notes
-------------	-----------	-------

IHC-P		Use a concentration of 4 - 8 µg/ml.
-------	--	-------------------------------------

Target

Relevance The function of LOC342293 remains unknown.

Images



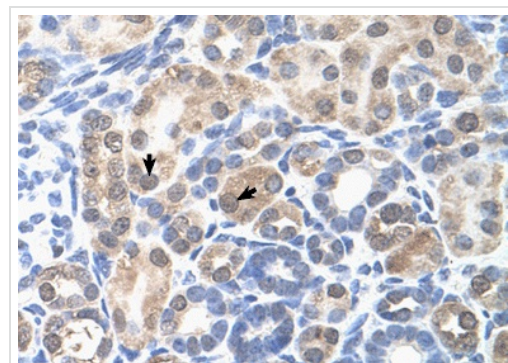
Anti-LOC342293 antibody (ab59651) at 1.25 µg/ml + HepG2 cell lysate at 10 µg

Secondary

HRP conjugated anti-Rabbit IgG at 1/50000 dilution

Predicted band size: 31 kDa

Observed band size: 36 kDa



Immunohistochemistry (Formalin/PFA-fixed paraffin-embedded sections) analysis of human kidney tissue labelling LOC342293 with ab59651 at 4-8µg/ml. Arrows indicate positively labelled epithelial cells of the renal tubule. Magnification: 400X.

Immunohistochemistry (Formalin/PFA-fixed paraffin-embedded sections) - Anti-LOC342293 antibody (ab59651)

Please note: All products are "FOR RESEARCH USE ONLY AND ARE NOT INTENDED FOR DIAGNOSTIC OR THERAPEUTIC USE"

Our Abpromise to you: Quality guaranteed and expert technical support

- Replacement or refund for products not performing as stated on the datasheet
- Valid for 12 months from date of delivery
- Response to your inquiry within 24 hours

- We provide support in Chinese, English, French, German, Japanese and Spanish
- Extensive multi-media technical resources to help you
- We investigate all quality concerns to ensure our products perform to the highest standards

If the product does not perform as described on this datasheet, we will offer a refund or replacement. For full details of the Abpromise, please visit <https://www.abcam.com/abpromise> or contact our technical team.

Terms and conditions

- Guarantee only valid for products bought direct from Abcam or one of our authorized distributors