


Product datasheet

Anti-NIFK antibody ab61203

3 Images

Overview

<b>Product name</b>	Anti-NIFK antibody
<b>Description</b>	Rabbit polyclonal to NIFK
<b>Host species</b>	Rabbit
<b>Specificity</b>	ab61203 detects endogenous levels of total NIFK protein.
<b>Tested applications</b>	<b>Suitable for:</b> WB, ELISA, ICC/IF, IHC-P
<b>Species reactivity</b>	<b>Reacts with:</b> Human <b>Predicted to work with:</b> Mouse 
<b>Immunogen</b>	Synthetic non-phosphopeptide derived from human NIFK around the phosphorylation site of threonine 234.
<b>Positive control</b>	Human brain tissue and HuvEc cells.

Properties

<b>Form</b>	Liquid
<b>Storage instructions</b>	Shipped at 4°C. Store at -20°C. Stable for 12 months at -20°C.
<b>Storage buffer</b>	Preservative: 0.02% Sodium Azide Constituents: 50% Glycerol, PBS (without Mg <sup>2+</sup> and Ca <sup>2+</sup> ), 150mM Sodium chloride, pH 7.4
<b>Purity</b>	Immunogen affinity purified
<b>Purification notes</b>	ab61203 was affinity-purified from rabbit antiserum by affinity-chromatography using epitope-specific immunogen.
<b>Clonality</b>	Polyclonal
<b>Isotype</b>	IgG

Applications

Our [Abpromise guarantee](#) covers the use of **ab61203** in the following tested applications.

The application notes include recommended starting dilutions; optimal dilutions/concentrations should be determined by the end user.

Application	Abreviews	Notes
WB		Use a concentration of 1 µg/ml. Detects a band of approximately 42 kDa (predicted molecular weight: 34 kDa).
ELISA		1/5000.
ICC/IF		1/100 - 1/500.
IHC-P		1/50 - 1/100.

## Target

### Sequence similarities

Contains 1 RRM (RNA recognition motif) domain.

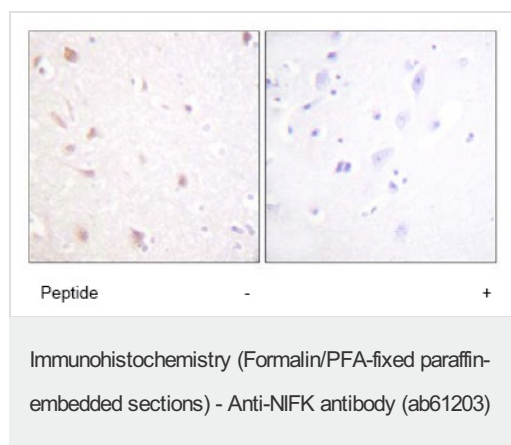
### Post-translational modifications

Sequentially phosphorylated on Thr-238, Thr-234 and Ser-230. Thr-234 is phosphorylated only when Thr-238 is phosphorylated. Likewise, phosphorylation at Ser-230 requires that Thr-234 and Thr-238 are phosphorylated. Phosphorylation enhances MKI67 binding.

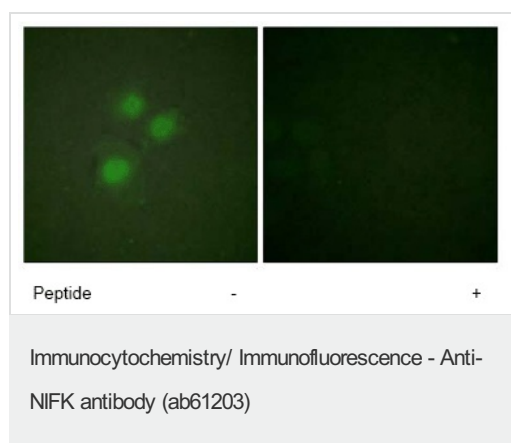
### Cellular localization

Nucleus > nucleolus. Chromosome. Localizes to mitotic chromosomes in conjunction with MKI67.

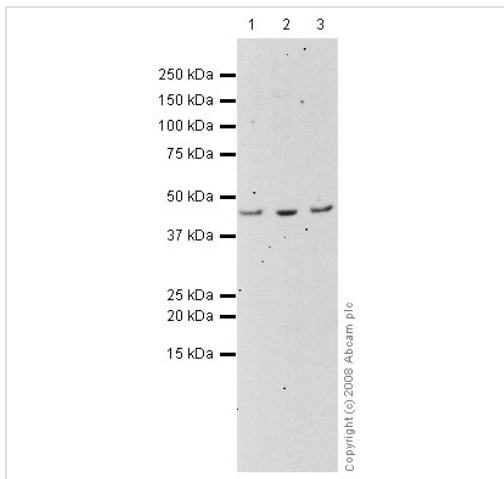
## Images



ab61203 at 1/50 dilution staining NIFK in human brain by Immunohistochemistry, Paraffin-embedded tissue, in the absence (left) or presence (right) of the immunising peptide.



ab61203 at 1/100 dilution staining NIFK in HuvEc cells by Immunofluorescence, in the absence (left) or presence (right) of the immunising peptide.



Western blot - Anti-NIFK antibody (ab61203)

**All lanes** : Anti-NIFK antibody (ab61203) at 1 µg/ml

**Lane 1** : HeLa (Human epithelial carcinoma cell line) Whole Cell Lysate

**Lane 2** : SW480 (Human colon adenocarcinoma cell line) Whole Cell Lysate (ab76999) with SW480 (Human colon adenocarcinoma cell line) Whole Cell Lysate

**Lane 3** : HepG2 (Human hepatocellular liver carcinoma cell line) Whole Cell Lysate

Lysates/proteins at 10 µg per lane.

### Secondary

**All lanes** : Goat polyclonal to Rabbit IgG - H&L - Pre-Adsorbed (HRP) (ab65484) at 1/3000 dilution

**Predicted band size:** 34 kDa

**Observed band size:** 41 kDa

[why is the actual band size different from the predicted?](#)

**Please note:** All products are "FOR RESEARCH USE ONLY AND ARE NOT INTENDED FOR DIAGNOSTIC OR THERAPEUTIC USE"

### Our Abpromise to you: Quality guaranteed and expert technical support

- Replacement or refund for products not performing as stated on the datasheet
- Valid for 12 months from date of delivery
- Response to your inquiry within 24 hours
- We provide support in Chinese, English, French, German, Japanese and Spanish
- Extensive multi-media technical resources to help you
- We investigate all quality concerns to ensure our products perform to the highest standards

If the product does not perform as described on this datasheet, we will offer a refund or replacement. For full details of the Abpromise, please visit <https://www.abcam.com/abpromise> or contact our technical team.

### Terms and conditions

- Guarantee only valid for products bought direct from Abcam or one of our authorized distributors