

## Product datasheet

# Anti-FKLF / KLF11 antibody ab61207

[2 Images](#)

### Overview

<b>Product name</b>	Anti-FKLF / KLF11 antibody
<b>Description</b>	Mouse monoclonal to FKLF / KLF11
<b>Host species</b>	Mouse
<b>Tested applications</b>	<b>Suitable for:</b> WB, ELISA, Flow Cyt
<b>Species reactivity</b>	<b>Reacts with:</b> Mouse, Rat, Human
<b>Immunogen</b>	Recombinant fragment with tag: TYFKSSHLKA HLRHTHTGEKP FNCSWDGCDK KFARSDLSR HRRHTHTGEKK FVCPVCDRRF MRSDHLTKHA RRHMTTKKIP GWQAEVGLN RIASAESPGS PLVSMPASA, corresponding to amino acids 404-513 of Human FKLF/ KLF11 <a href="#">Run BLAST with ExPASy</a> <a href="#">Run BLAST with NCBI</a>
<b>Positive control</b>	HeLa cell nuclear extract.

### Properties

<b>Form</b>	Liquid
<b>Storage instructions</b>	Shipped at 4°C. Upon delivery aliquot and store at -20°C or -80°C. Avoid repeated freeze / thaw cycles.
<b>Storage buffer</b>	Preservative: None Constituents: PBS, pH 7.2
<b>Purity</b>	Protein A purified
<b>Clonality</b>	Monoclonal
<b>Isotype</b>	IgG2a

### Applications

Our [Abpromise guarantee](#) covers the use of **ab61207** in the following tested applications.

The application notes include recommended starting dilutions; optimal dilutions/concentrations should be determined by the end user.

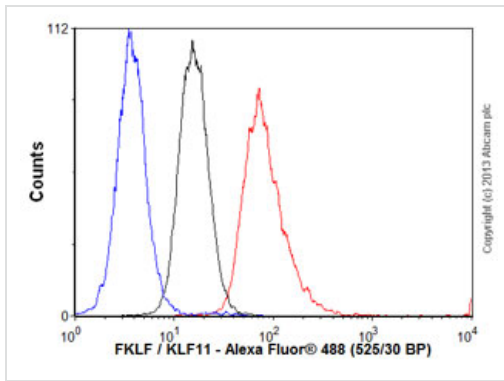
Application	Abreviews	Notes
-------------	-----------	-------

Application	Abreviews	Notes
WB		Use a concentration of 1 - 5 µg/ml. Detects a band of approximately 56 kDa (predicted molecular weight: 56 kDa).
ELISA		Use at an assay dependent concentration.
Flow Cyt		Use 1µg for 10 <sup>6</sup> cells. <a href="#">ab170191</a> - Mouse monoclonal IgG2a, is suitable for use as an isotype control with this antibody.

## Target

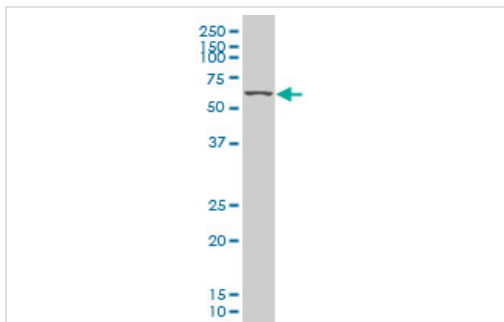
<b>Function</b>	Transcription factor. Activates the epsilon- and gamma-globin gene promoters and, to a much lower degree, the beta-globin gene and represses promoters containing SP1-like binding inhibiting cell growth. Represses transcription of SMAD7 which enhances TGF-beta signaling. Induces apoptosis.
<b>Tissue specificity</b>	Ubiquitous. Higher expression in erythroid cells.
<b>Involvement in disease</b>	Defects in KLF11 are the cause of maturity-onset diabetes of the young type 7 (MODY7) [MIM:610508]. MODY is a form of diabetes that is characterized by an autosomal dominant mode of inheritance, onset in childhood or early adulthood (usually before 25 years of age), a primary defect in insulin secretion and frequent insulin-independence at the beginning of the disease.
<b>Sequence similarities</b>	Belongs to the Sp1 C2H2-type zinc-finger protein family. Contains 3 C2H2-type zinc fingers.
<b>Cellular localization</b>	Nucleus.

## Images



Flow Cytometry - Anti-FKLF / KLF11 antibody (ab61207)

Overlay histogram showing K562 cells stained with ab61207 (red line). The cells were fixed with 80% methanol (5 min) and then permeabilized with 0.1% PBS-Tween for 20 min. The cells were then incubated in 1x PBS / 10% normal goat serum / 0.3M glycine to block non-specific protein-protein interactions followed by the antibody (ab61207, 1µg/1x10<sup>6</sup> cells) for 30 min at 22°C. The secondary antibody used was Alexa Fluor® 488 goat anti-mouse IgG (H&L) (ab150113) at 1/2000 dilution for 30 min at 22°C. Isotype control antibody (black line) was mouse IgG2a [ICIGG2A] (ab91361, 1µg/1x10<sup>6</sup> cells) used under the same conditions. Unlabelled sample (blue line) was also used as a control. Acquisition of >5,000 events were collected using a 20mW Argon ion laser (488nm) and 525/30 bandpass filter.



Western blot - Anti-FKLF / KLF11 antibody (ab61207)

Anti-FKLF / KLF11 antibody (ab61207) at 1 µg/ml + HeLa nuclear extract at 50 µg

**Secondary**

Goat Anti-Mouse IgG (H&L)-HRP at 1/2500 dilution

**Predicted band size:** 56 kDa

**Observed band size:** 56 kDa

**Please note:** All products are "FOR RESEARCH USE ONLY AND ARE NOT INTENDED FOR DIAGNOSTIC OR THERAPEUTIC USE"

**Our Abpromise to you: Quality guaranteed and expert technical support**

- Replacement or refund for products not performing as stated on the datasheet
- Valid for 12 months from date of delivery
- Response to your inquiry within 24 hours
- We provide support in Chinese, English, French, German, Japanese and Spanish
- Extensive multi-media technical resources to help you
- We investigate all quality concerns to ensure our products perform to the highest standards

If the product does not perform as described on this datasheet, we will offer a refund or replacement. For full details of the Abpromise,

please visit <https://www.abcam.com/abpromise> or contact our technical team.

## **Terms and conditions**

---

- Guarantee only valid for products bought direct from Abcam or one of our authorized distributors