

Product datasheet

Anti-Caspase-9 antibody ab61763

2 Images

Overview

Product name	Anti-Caspase-9 antibody
Description	Rabbit polyclonal to Caspase-9
Host species	Rabbit
Tested applications	Suitable for: ELISA, ICC/IF, WB
Species reactivity	Reacts with: Human
Immunogen	Synthetic peptide corresponding to Human Caspase-9. Database link: P55211
Positive control	Extracts from 293 cells, treated with Calyculin (50nM, 30mins), HeLa cells.

Properties

Form	Liquid
Storage instructions	Shipped at 4°C. Store at -20°C. Stable for 12 months at -20°C.
Storage buffer	Preservative: 0.02% Sodium Azide Constituents: 50% Glycerol, PBS, 150mM Sodium chloride, pH 7.4
Purity	Immunogen affinity purified
Clonality	Polyclonal
Isotype	IgG

Applications

Our [Abpromise guarantee](#) covers the use of **ab61763** in the following tested applications.

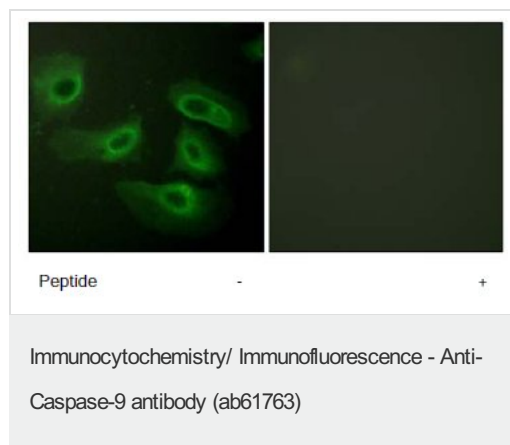
The application notes include recommended starting dilutions; optimal dilutions/concentrations should be determined by the end user.

Application	Abreviews	Notes
ELISA		1/20000.
ICC/IF		1/500 - 1/1000.
WB		1/5 - 1/1000. Detects a band of approximately 46 kDa (predicted molecular weight: 46 kDa).

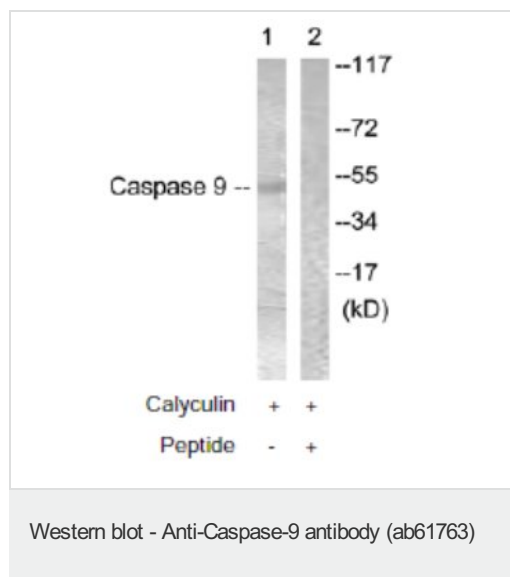
Target

Function	Involved in the activation cascade of caspases responsible for apoptosis execution. Binding of caspase-9 to Apaf-1 leads to activation of the protease which then cleaves and activates caspase-3. Proteolytically cleaves poly(ADP-ribose) polymerase (PARP). Isoform 2 lacks activity is an dominant-negative inhibitor of caspase-9.
Tissue specificity	Ubiquitous, with highest expression in the heart, moderate expression in liver, skeletal muscle, and pancreas. Low levels in all other tissues. Within the heart, specifically expressed in myocytes.
Sequence similarities	Belongs to the peptidase C14A family. Contains 1 CARD domain.
Developmental stage	Expressed at low levels in fetal heart, at moderate levels in neonate heart, and at high levels in adult heart.
Post-translational modifications	Cleavages at Asp-315 by granzyme B and at Asp-330 by caspase-3 generate the two active subunits. Caspase-8 and -10 can also be involved in these processing events.

Images



HeLa cells stained with ab61763 at 1/500 dilution, with and without the immunising peptide.



All lanes : Anti-Caspase-9 antibody (ab61763) at 1/500 dilution

Lane 1 : Extracts from 293 cells, treated with Calyculin (50nM, 30mins).

Lane 2 : Extracts from 293 cells, treated with Calyculin (50nM, 30mins), and the immunising peptide.

Predicted band size: 46 kDa

Observed band size: 46 kDa

Please note: All products are "FOR RESEARCH USE ONLY AND ARE NOT INTENDED FOR DIAGNOSTIC OR THERAPEUTIC USE"

Our Abpromise to you: Quality guaranteed and expert technical support

- Replacement or refund for products not performing as stated on the datasheet
- Valid for 12 months from date of delivery
- Response to your inquiry within 24 hours

- We provide support in Chinese, English, French, German, Japanese and Spanish
- Extensive multi-media technical resources to help you
- We investigate all quality concerns to ensure our products perform to the highest standards

If the product does not perform as described on this datasheet, we will offer a refund or replacement. For full details of the Abpromise, please visit <https://www.abcam.com/abpromise> or contact our technical team.

Terms and conditions

- Guarantee only valid for products bought direct from Abcam or one of our authorized distributors