


## Product datasheet

# Anti-SLC6A18 antibody ab62269

[2 Images](#)

### Overview

<b>Product name</b>	Anti-SLC6A18 antibody
<b>Description</b>	Rabbit polyclonal to SLC6A18
<b>Host species</b>	Rabbit
<b>Tested applications</b>	<b>Suitable for:</b> WB, IHC-P, ELISA
<b>Species reactivity</b>	<b>Reacts with:</b> Human <b>Predicted to work with:</b> Mouse, Rat, Horse, Cow, Cat, Dog, Pig 
<b>Immunogen</b>	A region within synthetic peptide: VAQLPLKACL LEDFLDKSAS GPGLAFVVFT ETDLHMPGAP VWAMLFFGML, corresponding to internal sequence amino acids 361-410 of Human SLC6A18 <a href="#">Run BLAST with ExPASy</a> <a href="#">Run BLAST with NCBI</a>
<b>Positive control</b>	Jurkat cell lysate. Human kidney.

### Properties

<b>Form</b>	Liquid
<b>Storage instructions</b>	Shipped at 4°C. Upon delivery aliquot and store at -20°C or -80°C. Avoid repeated freeze / thaw cycles.
<b>Storage buffer</b>	Preservative: None Constituents: 2% Sucrose, PBS
<b>Purity</b>	Protein A purified
<b>Clonality</b>	Polyclonal
<b>Isotype</b>	IgG

### Applications

Our [Abpromise guarantee](#) covers the use of **ab62269** in the following tested applications.

The application notes include recommended starting dilutions; optimal dilutions/concentrations should be determined by the end user.

Application	Abreviews	Notes

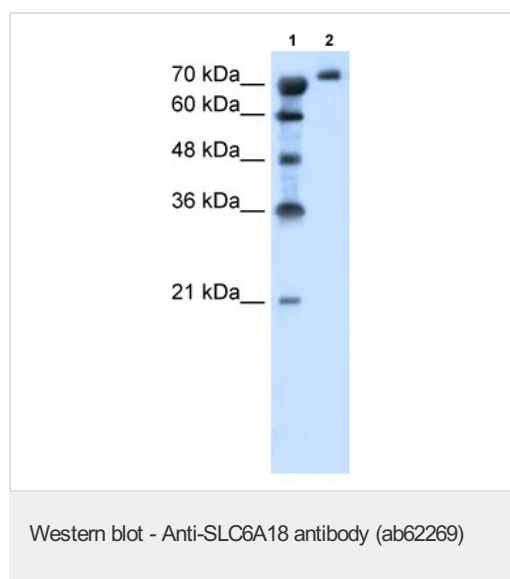
Application	Abreviews	Notes
WB		Use a concentration of 1.25 µg/ml. Detects a band of approximately 71 kDa (predicted molecular weight: 71 kDa). Good results were obtained when blocked with 5% non-fat dry milk in 0.05% PBS-T.
IHC-P		Use a concentration of 4 - 8 µg/ml.
ELISA		Use at an assay dependent concentration. Titre using peptide based assay: 1/312500.

## Target

**Relevance** SLC6A18 (solute carrier family 6, member 18) belongs to the sodium:neurotransmitter symporter (SNF) family. The SLC6 family of proteins act as specific transporters for neurotransmitters, amino acids, and osmolytes like betaine, taurine, and creatine. The specific function of SLC6A18 function remains unknown. It is abundantly expressed in kidney, but is not expressed in the intestine.

**Cellular localization** Membrane; Multi-pass membrane protein.

## Images



**All lanes** : SLC6A18 antibody (ab62269) at 1.25µg/ml (in 5% skim milk / PBS buffer)

**Lane 1** : Molecular weight marker

**Lane 2** : Jurkat cell lysate at 10 µg

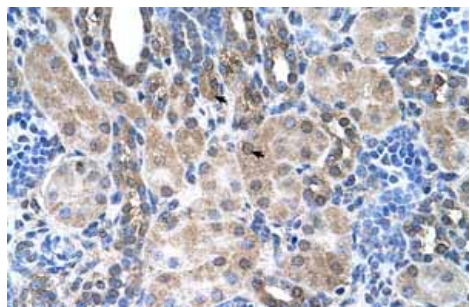
### Secondary

**All lanes** : HRP conjugated anti-Rabbit IgG at 1/50000 dilution

**Predicted band size:** 71 kDa

**Observed band size:** 71 kDa

Gel concentration: 12%



Immunohistochemistry (Formalin/PFA-fixed paraffin-embedded sections) analysis of human kidney tissue labelling SLC6A18 with ab62269 at 4-8µg/ml. Arrows indicate positively labelled epithelial cells of the renal tubule. Magnification: 400X.

Immunohistochemistry (Formalin/PFA-fixed paraffin-embedded sections) - Anti-SLC6A18 antibody (ab62269)

**Please note:** All products are "FOR RESEARCH USE ONLY AND ARE NOT INTENDED FOR DIAGNOSTIC OR THERAPEUTIC USE"

### **Our Abpromise to you: Quality guaranteed and expert technical support**

- Replacement or refund for products not performing as stated on the datasheet
- Valid for 12 months from date of delivery
- Response to your inquiry within 24 hours
- We provide support in Chinese, English, French, German, Japanese and Spanish
- Extensive multi-media technical resources to help you
- We investigate all quality concerns to ensure our products perform to the highest standards

If the product does not perform as described on this datasheet, we will offer a refund or replacement. For full details of the Abpromise, please visit <https://www.abcam.com/abpromise> or contact our technical team.

### **Terms and conditions**

- Guarantee only valid for products bought direct from Abcam or one of our authorized distributors