

Product datasheet

Anti-Bak antibody - Aminoterminal end ab62486

2 Images

Overview

Product name	Anti-Bak antibody - Aminoterminal end
Description	Rabbit polyclonal to Bak - Aminoterminal end
Host species	Rabbit
Specificity	This antibody reacts with Bak
Tested applications	Suitable for: WB, ICC
Species reactivity	Reacts with: Mouse, Human
Immunogen	A 13 amino acid synthetic peptide from near the amino terminus of human Bak
Positive control	L1210 cell lysates and L1210 cells

Properties

Form	Liquid
Storage instructions	Shipped at 4°C. Store at +4°C.
Storage buffer	Preservative: 0.02% Sodium azide Constituent: PBS
Purity	Ion Exchange Chromatography
Clonality	Polyclonal
Isotype	IgG

Applications

Our [Abpromise guarantee](#) covers the use of **ab62486** in the following tested applications.

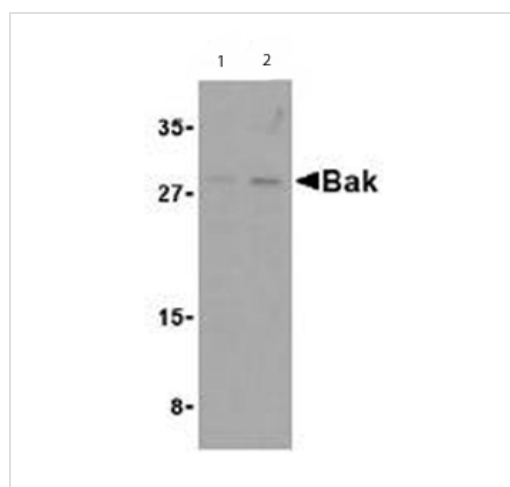
The application notes include recommended starting dilutions; optimal dilutions/concentrations should be determined by the end user.

Application	Abreviews	Notes
WB		Use a concentration of 1 - 2 µg/ml. Detects a band of approximately 28 kDa (predicted molecular weight: 23 kDa).
ICC		Use a concentration of 2 µg/ml.

Target

Function	In the presence of an appropriate stimulus, accelerates programmed cell death by binding to, and antagonizing the anti-apoptotic action of BCL2 or its adenovirus homolog E1B 19k protein. Low micromolar levels of zinc ions inhibit the promotion of apoptosis.
Tissue specificity	Expressed in a wide variety of tissues, with highest levels in the heart and skeletal muscle.
Sequence similarities	Belongs to the Bcl-2 family.
Domain	Intact BH3 motif is required by BIK, BID, BAK, BAD and BAX for their pro-apoptotic activity and for their interaction with anti-apoptotic members of the Bcl-2 family.
Cellular localization	Mitochondrion membrane.

Images



Western blot - Anti-Bak antibody - Aminoterminal end (ab62486)

Lane 1 : Anti-Bak antibody - Aminoterminal end (ab62486) at 1 $\mu\text{g/ml}$

Lane 2 : Anti-Bak antibody - Aminoterminal end (ab62486) at 2 $\mu\text{g/ml}$

All lanes : L1210 cell lysates

Lysates/proteins at 15 μg per lane.

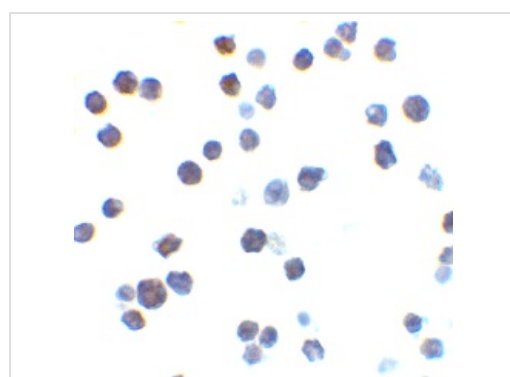
Secondary

All lanes : Anti rabbit IgG secondary antibody

Predicted band size: 23 kDa

Observed band size: 28 kDa

[why is the actual band size different from the predicted?](#)



Immunocytochemistry - Anti-Bak antibody - Aminoterminal end (ab62486)

Immunocytochemistry of Bak in L1210 cells with ab62486 antibody at 2 $\mu\text{g/ml}$.

Our Abpromise to you: Quality guaranteed and expert technical support

- Replacement or refund for products not performing as stated on the datasheet
- Valid for 12 months from date of delivery
- Response to your inquiry within 24 hours

- We provide support in Chinese, English, French, German, Japanese and Spanish
- Extensive multi-media technical resources to help you
- We investigate all quality concerns to ensure our products perform to the highest standards

If the product does not perform as described on this datasheet, we will offer a refund or replacement. For full details of the Abpromise, please visit <https://www.abcam.com/abpromise> or contact our technical team.

Terms and conditions

- Guarantee only valid for products bought direct from Abcam or one of our authorized distributors