

Product datasheet

Anti-SHP2 antibody - Carboxyterminal end ab62515

1 Image

Overview

Product name	Anti-SHP2 antibody - Carboxyterminal end
Description	Rabbit polyclonal to SHP2 - Carboxyterminal end
Host species	Rabbit
Tested applications	Suitable for: WB
Species reactivity	Reacts with: Mouse, Rat, Human
Immunogen	Synthetic peptide (Human) of 14 amino acids from near the C-terminus of SHP2
Positive control	Mouse skeletal muscle tissue lysate

Properties

Form	Liquid
Storage instructions	Shipped at 4°C. Store at +4°C.
Storage buffer	Preservative: 0.02% Sodium Azide Constituents: PBS
Purity	Immunogen affinity purified
Clonality	Polyclonal
Isotype	IgG

Applications

Our [Abpromise guarantee](#) covers the use of **ab62515** in the following tested applications.

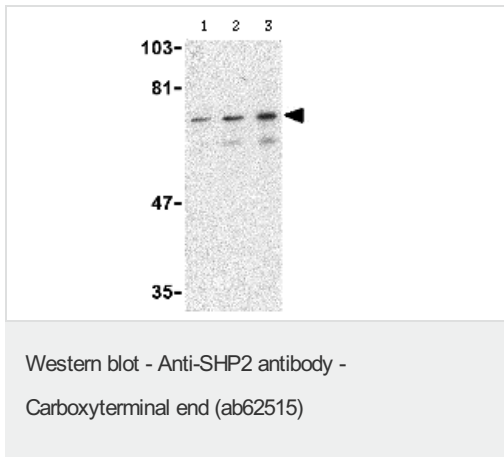
The application notes include recommended starting dilutions; optimal dilutions/concentrations should be determined by the end user.

Application	Abreviews	Notes
WB		Use a concentration of 0.5 - 2 µg/ml. Detects a band of approximately 68 kDa (predicted molecular weight: 68 kDa).

Target

Function	Acts downstream of various receptor and cytoplasmic protein tyrosine kinases to participate in the signal transduction from the cell surface to the nucleus.
Tissue specificity	Widely expressed, with highest levels in heart, brain, and skeletal muscle.
Involvement in disease	<p>Defects in PTPN11 are the cause of LEOPARD syndrome type 1 (LEOPARD1) [MIM:151100]. It is an autosomal dominant disorder allelic with Noonan syndrome. The acronym LEOPARD stands for lentigines, electrocardiographic conduction abnormalities, ocular hypertelorism, pulmonic stenosis, abnormalities of genitalia, retardation of growth, and deafness.</p> <p>Defects in PTPN11 are the cause of Noonan syndrome type 1 (NS1) [MIM:163950]. Noonan syndrome (NS) is a disorder characterized by dysmorphic facial features, short stature, hypertelorism, cardiac anomalies, deafness, motor delay, and a bleeding diathesis. Some patients with Noonan syndrome type 1 develop multiple giant cell lesions of the jaw or other bony or soft tissues, which are classified as pigmented villomoduolar synovitis (PVNS) when occurring in the jaw or joints. Note=Mutations in PTPN11 account for more than 50% of the cases. Rarely, NS is associated with juvenile myelomonocytic leukemia (JMML). NS1 inheritance is autosomal dominant.</p> <p>Defects in PTPN11 are a cause of juvenile myelomonocytic leukemia (JMML) [MIM:607785]. JMML is a pediatric myelodysplastic syndrome that constitutes approximately 30% of childhood cases of myelodysplastic syndrome (MDS) and 2% of leukemia. It is characterized by leukocytosis with tissue infiltration and in vitro hypersensitivity of myeloid progenitors to granulocyte-macrophage colony stimulating factor.</p> <p>Defects in PTPN11 are a cause of metachondromatosis (MC) [MIM:156250]. It is a skeletal disorder with radiologic fetarures of both multiple exostoses and Ollier disease, characterized by the presence of multiple enchondromas and osteochondroma-like lesions.</p>
Sequence similarities	<p>Belongs to the protein-tyrosine phosphatase family. Non-receptor class 2 subfamily.</p> <p>Contains 2 SH2 domains.</p> <p>Contains 1 tyrosine-protein phosphatase domain.</p>
Domain	The SH2 domains repress phosphatase activity. Binding of these domains to phosphotyrosine-containing proteins relieves this auto-inhibition, possibly by inducing a conformational change in the enzyme.
Post-translational modifications	Phosphorylated on Tyr-546 and Tyr-584 upon receptor protein tyrosine kinase activation; which creates a binding site for GRB2 and other SH2-containing proteins.
Cellular localization	Cytoplasm.

Images



Lane 1 : Anti-SHP2 antibody -
Carboxyterminal end (ab62515) at 0.5 µg/ml

Lane 2 : Anti-SHP2 antibody -
Carboxyterminal end (ab62515) at 1 µg/ml

Lane 3 : Anti-SHP2 antibody -
Carboxyterminal end (ab62515) at 2 µg/ml

All lanes : mouse skeletal muscle tissue
lysate

Lysates/proteins at 15 µg per lane.

Predicted band size: 68 kDa

Observed band size: 68 kDa

Additional bands at: 60 kDa. We are unsure
as to the identity of these extra bands.

Please note: All products are "FOR RESEARCH USE ONLY AND ARE NOT INTENDED FOR DIAGNOSTIC OR THERAPEUTIC USE"

Our Abpromise to you: Quality guaranteed and expert technical support

- Replacement or refund for products not performing as stated on the datasheet
- Valid for 12 months from date of delivery
- Response to your inquiry within 24 hours
- We provide support in Chinese, English, French, German, Japanese and Spanish
- Extensive multi-media technical resources to help you
- We investigate all quality concerns to ensure our products perform to the highest standards

If the product does not perform as described on this datasheet, we will offer a refund or replacement. For full details of the Abpromise, please visit <https://www.abcam.com/abpromise> or contact our technical team.

Terms and conditions

- Guarantee only valid for products bought direct from Abcam or one of our authorized distributors